



PARTS & INSTALLATION MANUAL

SL-75



HOIST SERIAL NUMBER

TABLE OF CONTENTS

I. <u>INTRODUCTION</u>	
Letter to Customer	1-1
II. <u>INSTALLATION</u>	
Initial Inspection	2-1
General Installation Procedure	2-1
Hoist Installation	2-2
Spacer Kit Installation	2-4
Power Pack Installation	2-4
Connecting Power Pack Hydraulic Hoses	2-6
Power Pack Electrical Wiring	2-8
EHV Installation	2-10
Hydraulic Tank Installation	2-12
Start Up Procedure	2-13
III. <u>PARTS</u>	
Base Hoist Assembly	3-1
Main Frame Assembly	3-2
Pivot Joint Assembly	3-3
Outer Tube Assembly	3-4
Pivot Lock Sub-Assembly	3-5
Body Lock Assembly	3-6
Hoist Installation Kit	3-7
Base Cylinder Circuit	3-8
Decal Assembly	3-9
IV. <u>OPTIONS</u>	
Spacer Kit	4-1
Tank Circuit (EHV)	4-2
Hose Circuit (EHV)	4-3



REVISION TABLE

REV. DATE	MADE BY	PAGE	DETAILS
04/27/2026	M. PAYNE	3-2	13H29 – 00P97 Snap Ring added
		3-5	13H42 – 02P35 Eyebolt replaced 13H50
		3-7	13H38 – 91P79 Technical Guide added
		3-9	13H40 – Decal Assembly added to Parts section



TO THE CUSTOMER:

THIS MANUAL CONTAINS INSTALLATION INSTRUCTIONS TO THE TRUCK CHASSIS. ALL INSTRUCTIONS ARE RECOMMENDED PROCEDURES ONLY. THIS MANUAL ALSO PROVIDES BREAKDOWNS OF EACH SUB-ASSEMBLY APART OF THE HOIST THAT LISTS PART NUMBERS AND DESCRIPTIONS SHOULD ANYTHING NEED TO BE REPLACED ON THE HOIST. EACH SECTION IS CLEARLY IDENTIFIED SO YOU CAN EASILY FIND THE INFORMATION THAT YOU NEED. READ THE TABLE OF CONTENTS TO LEARN WHERE EACH SECTION IS LOCATED.



Throughout this manual you will come across "**Dangers,**" "**Warnings,**" or "**Cautions**" which will be carried out in bold type and preceded by the symbol as indicated to the left. Be certain to carefully read the message that follows to avoid the possibility of personal injury or machine damage.

Record your SwapLoader Hoist serial number in the appropriate space provided on the title page. Your SwapLoader dealer needs this information to give prompt, efficient service when ordering parts. It pays to rely on an authorized SwapLoader Distributor for your service needs. For the location of the Distributor nearest you, contact SwapLoader.

Also, included with your hoist, is a Technical Guide. This guide provides safety suggestions, technical information, operation instructions, maintenance requirements, troubleshooting, and accessory installation instructions. Please refer to the Technical Guide for any questions you may have pertained to the above.

NOTE: It is SwapLoader's policy to constantly strive to improve SwapLoader products. The information, specifications, and illustrations in this publication are based on the information in effect at the time of approval for printing and publishing. SwapLoader therefore reserves the right to make changes in design and improvements whenever it is believed the efficiency of the unit will be improved without incurring any obligations to incorporate such improvements in any unit which has been shipped or is in service. It is recommended that users contact an authorized SwapLoader Distributor for the latest revisions.

This Page Intentionally Left Blank

INSTALLATION

This Page Intentionally Left Blank

INITIAL INSPECTION



When the hoist is installed and ready for delivery, it is your responsibility to fill out and submit the Product Registration Form. Visit [Truck-Mounted Product Registration - Swaploader](#) to complete this form.

When the SwapLoader hoist is received from the factory, you should inspect the hoist for damage, which may have occurred in shipment. If damage has occurred, you should contact the shipper immediately. Be sure to note any damage or missing items on bill of Lading.

When you receive your SwapLoader hoist, it is your responsibility to make sure you have received all the parts and pieces that were ordered, within 30 days of the invoice date of the hoist. Lay out all the options, loose parts and accessories on a table and compare the items received vs the Packing List and the Loose Parts Box List(s) shipped with the hoist order.

If you have any problems, shortages, or questions, please contact SwapLoader U.S.A., Ltd. immediately.

GENERAL INSTALLATION PROCEDURE

The installation of a SL-75 on a truck chassis will generally follow these steps:

1. Install hoist assembly onto truck chassis.
2. Install a Power Pack or EHV system to the hoist and install the hydraulic plumbing from the control valve to the hydraulic cylinders. Then install the control switchbox in the cab and route the harnesses to the Power Pack or EHV and truck battery.
If utilizing an EHV complete the following additional steps:
3. Select and install the P.T.O. on the truck transmission. (Note: This can be done prior to hoist installation on the truck chassis.)
4. Install the hydraulic pump and the plumbing from the pump to the hydraulic tank and control valve assembly.
5. Fill the hydraulic tank with oil, bleed the air from the pump suction line, and start up the unit.

Although SwapLoader attempts to include the mounts and attaching fasteners with each hoist unit, your installation may require some additional mounts or modifications. If you have problems with your installation, please contact SwapLoader at 1-888-767-8000, as we may be aware of another customer who has installed a SwapLoader on a similar truck chassis.

HOIST INSTALLATION TO TRUCK CHASSIS

1. Place the SL-75 hoist assembly on the truck chassis. The truck chassis mounting surface should be flat without any steps or protrusions. If necessary, shim bars need to be added to ensure a flat surface on which to support hoist. It is advised to clamp the main frame of the hoist to the truck chassis prior to install of the mount brackets.

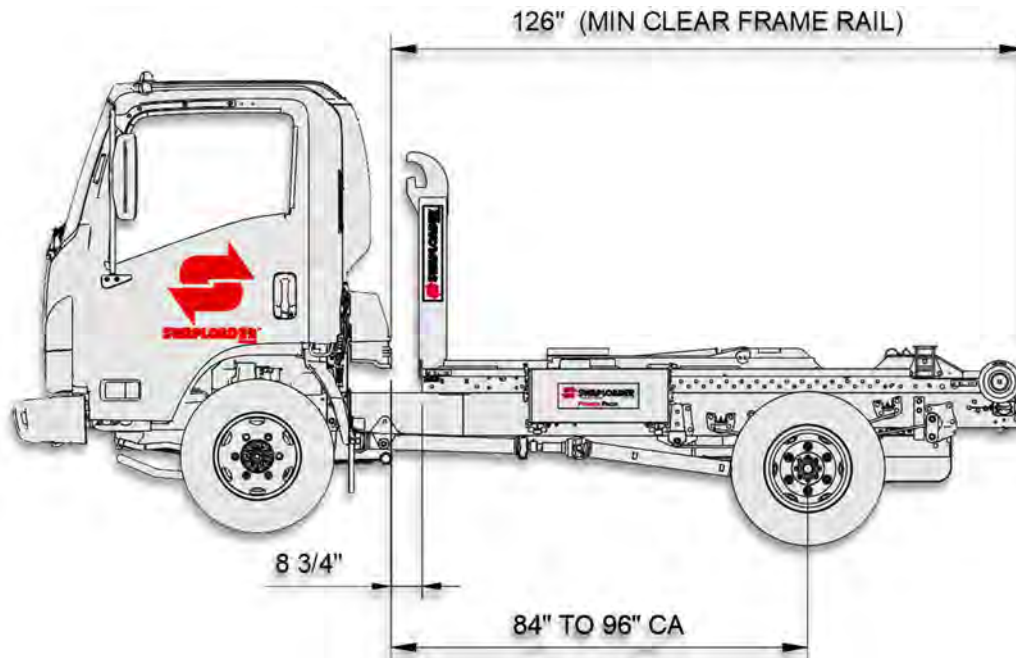


Figure A

The clear frame dimension indicated in *Fig. A* allows for the overall length of the hoist plus 5 inches for cab clearance and rear light bar mounting. Extra frame length may be needed to allow for mounting additional accessories (e.g. Cab Guard, Tarper, Light Kit, Stabilizer, etc.). For example, when mounting a light kit on a truck with a long CA, check that the hoist and the light kit are positioned far enough back to eliminate any interference between the fender and the light kit. You should also consider the final weight distribution regarding the bridge codes and axle GVWR when positioning the hoist.

NOTE:

THE ABOVE SPECIFICATIONS ARE A MINIMUM REQUIREMENT. IT IS THE RESPONSIBILITY OF THE OWNER/ OPERATOR TO ENSURE THE COMPLETED CHASSIS MEETS OR EXCEEDS ALL FEDERAL, STATE, AND LOCAL REGULATIONS. ALSO, THE HOIST SHOULD NOT BE USED TO LIFT AND HAUL ANY LOAD THAT EXCEEDS THE LOAD RATING OF ANY OF THE INDIVIDUAL COMPONENTS OF THE COMPLETED CHASSIS (TIRES, AXLES, SUSPENSION, ETC.)

2. There are three types of mount brackets used on the Model SL-75 hoist as indicated in *Fig. B*. They are the front brackets (*Pt. No. 25H91*), the mid brackets (*Pt. No. 25H89*) and the rear brackets (*Pt. No. 26H74*). Locate the mount brackets on the side of the hoist as

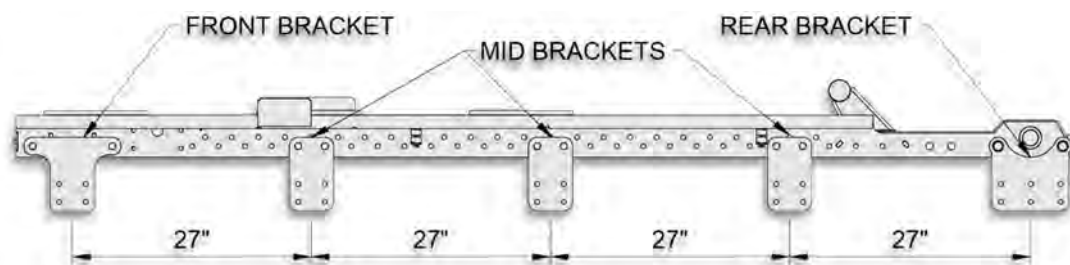


Figure B

indicated in *Fig. B*. These dimensions are flexible because of possible interference with chassis components. Also allow for mounting the Power Pack. You should consult the truck chassis supplier for any limitations regarding drilling mount holes in the truck chassis frame rails. Typically, the holes must be at least $2\frac{3}{4}$ " from the top of the truck chassis rails (reference *Fig. C*, *Fig. D* & *Fig. E*). Mid brackets will have more flexibility due to the additional row of holes in the Main Frame and allows for drilling into the truck chassis frame rails at $2\frac{3}{4}$ ", $3\frac{3}{4}$ " or $4\frac{3}{4}$ " (**bolts are only required on two of the four lower mount bracket holes**). Once the locations of the mount brackets have been determined, use the mount brackets as a template for marking the mounting holes in the truck chassis frame rails. Drill the $\frac{17}{32}$ " diameter holes required and attach the brackets to the truck chassis with the $\frac{1}{2}$ " diameter bolts, washers, and locking hex nuts provided. **Torque to 110 ft.lb.**

3. Bolt the mount brackets to the hoist main frame as indicated on *Fig. C*, *D* and *E*. You may need to modify the mount brackets or add shim plates to allow for variances in the width of the truck chassis as well as to allow for top rivets, stepped channels, etc.

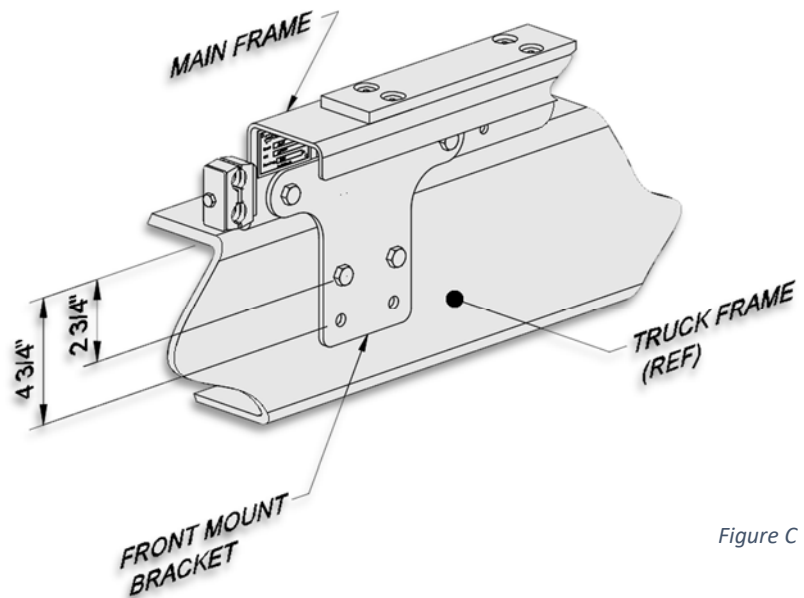


Figure C

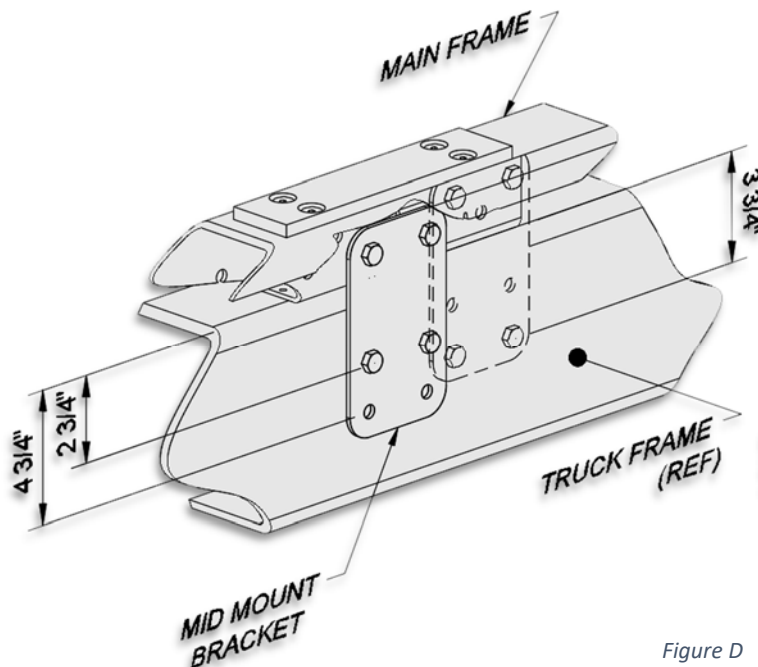


Figure D

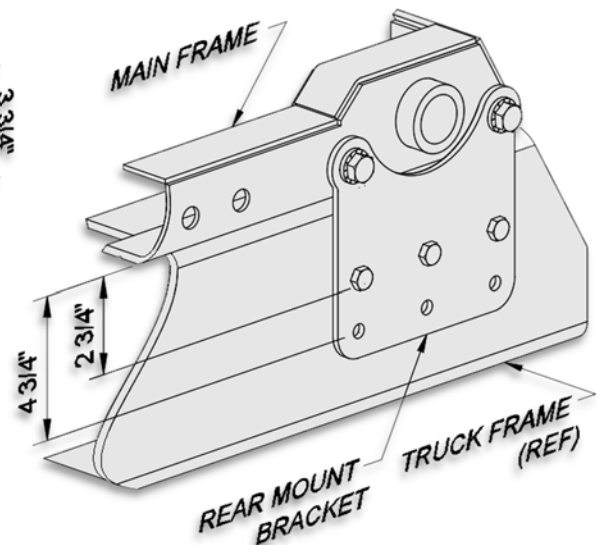


Figure E

SPACER KIT INSTALLATION

The SL-75 has made available an alternative option when installing to the truck chassis. The Spacer Kit (*Pt. No. 13H49*) allows for the hoist to be raised to account for any interferences from components of the truck that are above the chassis. The main frame of the hoist will have pre-drilled holes into the bottom flange that will sit on top of the spacer provided in the spacer kit. Be sure to drill $\text{\O}1/4$ " holes into the spacers to drive the spring pins into.

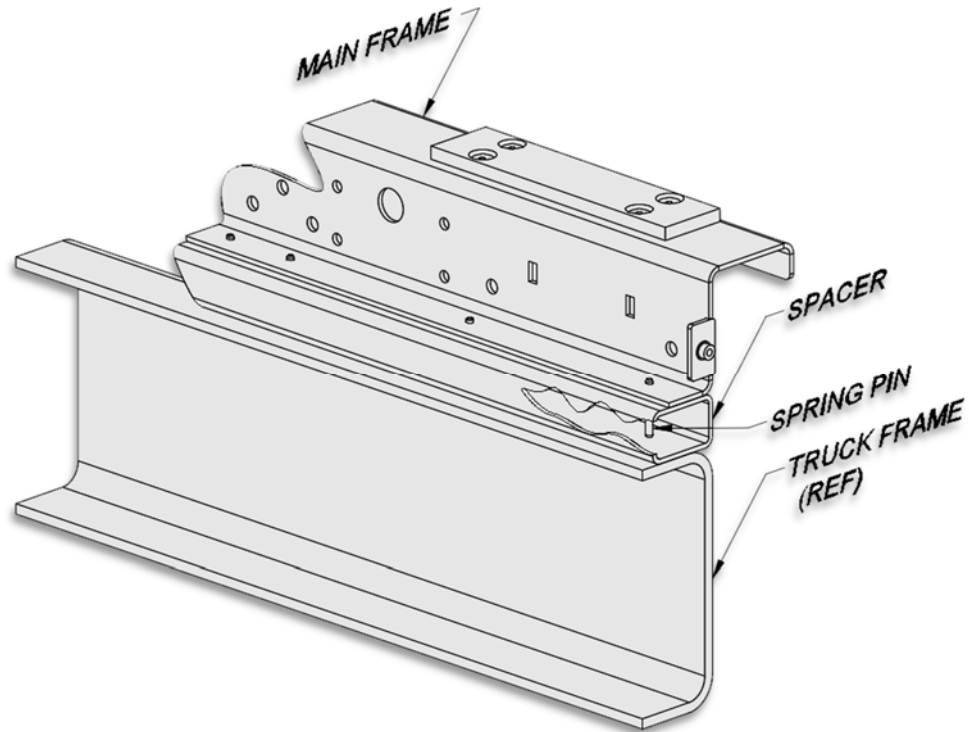


Figure F

POWER PACK INSTALLATION

Introduction to the Power Pack: The SwapLoader Power Pack provides on demand hydraulic power from a self-contained power unit which consists of a gear pump, 24V electric motor, directional valve, and reservoir. To provide 24V to the motor, an additional 12V AGM 27 or AGM 31 auxiliary battery is required. The auxiliary battery is connected first to a series parallel switch and then subsequently to the truck batteries through the series parallel switch. This configuration allows for the auxiliary battery to charge in parallel with the truck batteries at 12V while the Power Pack is not engaged. When the in-cab control switch activates the power unit, this simultaneously triggers the series parallel switch and places the auxiliary battery in series with the truck battery thus providing 24V to the electric motor.

Also integrated into the hydraulic system is a ferrous proximity sensor, which detects only metal. In the case of the SL-75, the proximity sensor will sense the outer tube while it is in a flat position. When the outer tube is not flat, the sensor will not allow a signal to be sent to the jib section of the control valve, which effectively disables the jib function of the hoist

1. Review all directions and diagrams provided before starting the SwapLoader Power Pack installation.
2. Mount Right and Left Bracket to hoist main frame. Holes are predrilled on the main frame of the hoist. Measure 21" between the two holes as shown in *Fig. G*. If a 21" dimension is not possible due to truck constraints, the bracket can be brought closer together. In this case, use a dimension of 15". Use 1/2" bolts, washers and nylon nuts to secure the brackets to the main frame. Depending on truck frame width, it may be necessary to add shims (not included) to either the Main Frame or truck frame to mount brackets flush.

22P72 – Power Pack

ITEM	QTY	DESCRIPTION
1	1	Cover, Power Pack
2	1	Power Pack Support Bracket, Right
3	1	Power Pack Support Bracket, Left
4	8	HHCS 3/8-16 x 1 Gr8
5	8	Washer, Flat 3/8 Dia
6	8	Nut, Hex 3/8-16 Gr8
7	8	HHCS 1/2-13 x 1-1/2 Pl Gr8
8	8	Washer, Flat 1/2 Pl
9	8	Nut, Nylon 1/2-13 Gr8

3. Drill 17/32" diameter holes into the truck frame. The distance between the holes will be dependent on whether the standard 21" spacing was used between the two brackets. Use 1/2" bolts, washers and nylon nuts.

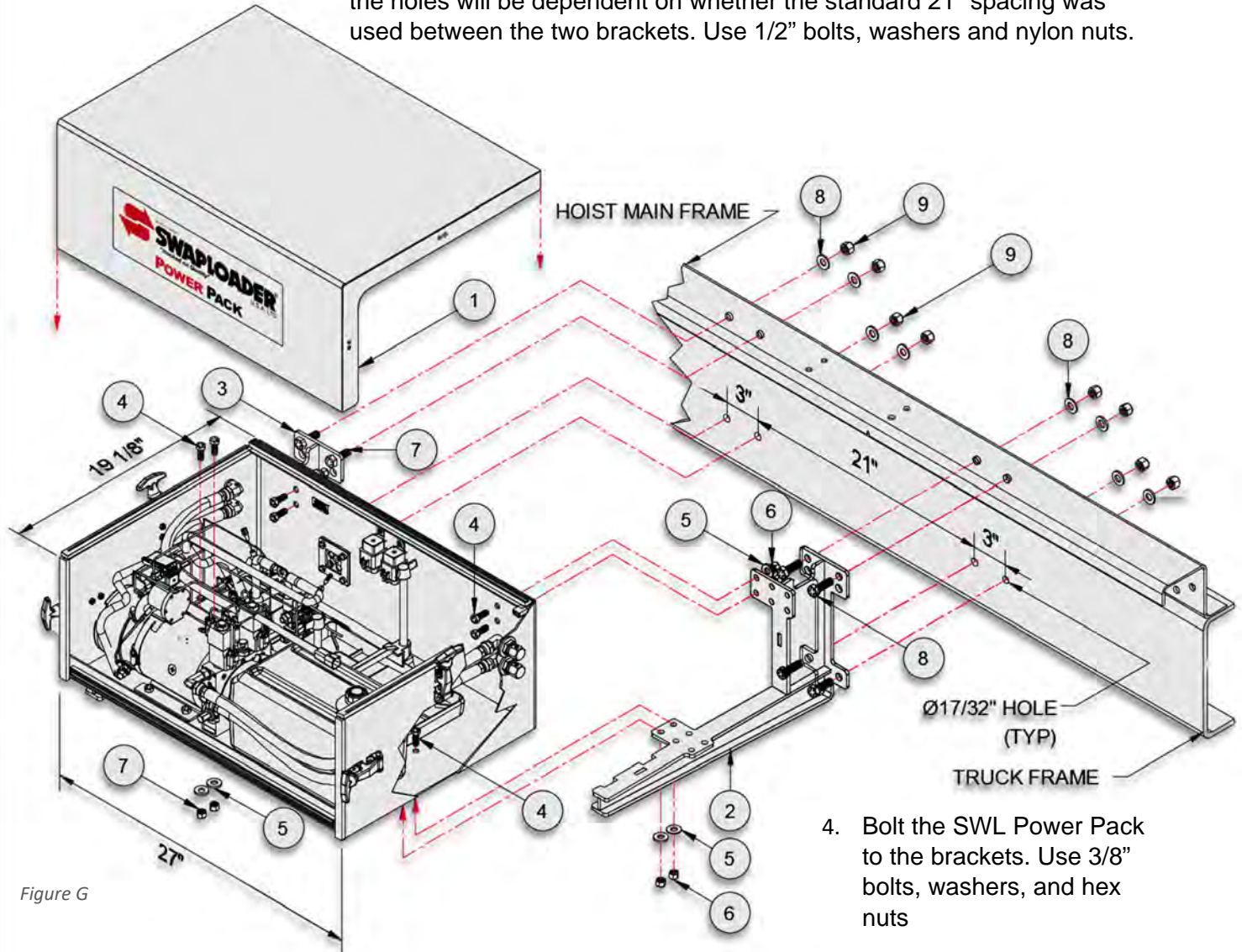


Figure G

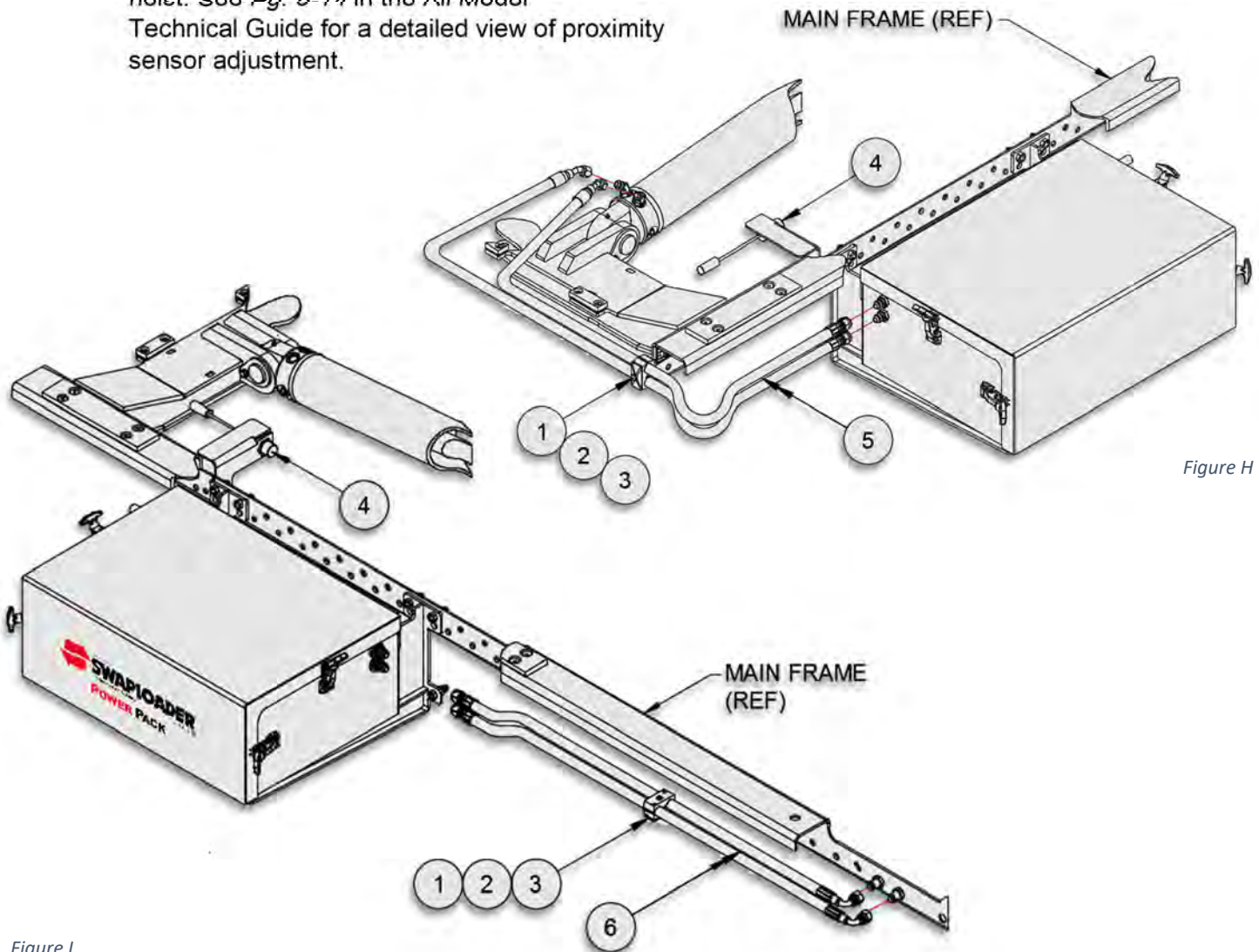
4. Bolt the SWL Power Pack to the brackets. Use 3/8" bolts, washers, and hex nuts

CONNECTING POWER PACK HYDRAULIC HOSES

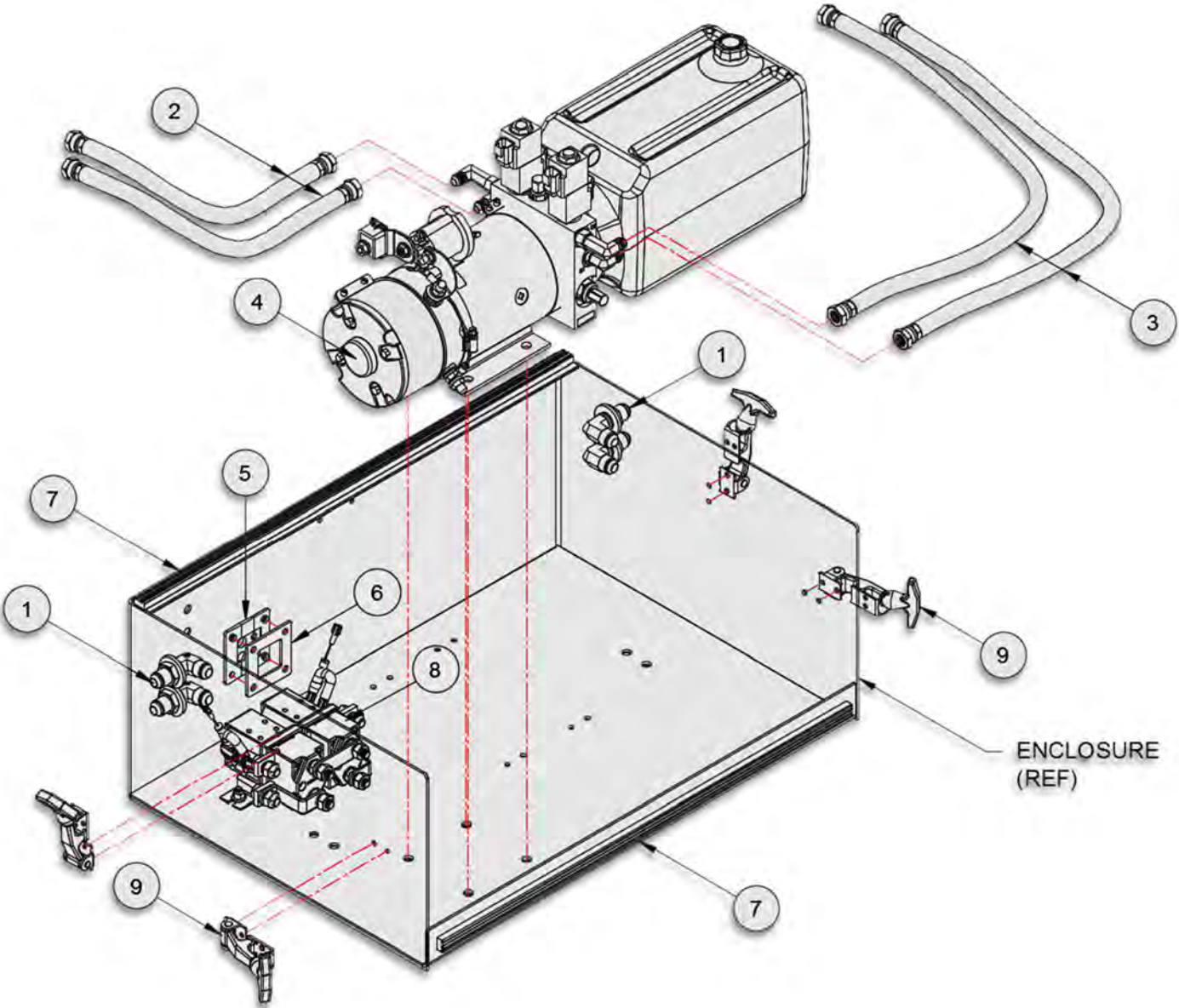
5. Hook up hydraulic hoses to the lift cylinders as shown in *Fig. H*. Use item 1, 2 & 3 to secure hoses to the main frame of the hoist.

6. See *Fig. I* for connecting the hyd. lines to the jib. Use items 1, 2 & 3 to fasten hyd. hoses to the main frame of the hoist. See *Pg. 5-11* in the All Model Technical Guide for a detailed view of proximity sensor adjustment.

Power Pack Hose Circuit			
ITEM	PART #	QTY	DESCRIPTION
1	10P63	2	HHCS 5/16 x 1-3/4
2	10P64	2	Cover Plate, Clamp 1/2"
3	10P65	2	Clamp Assy, Twin 7/8"
4	13P61	1	Proximity Sensor
5	13P70	2	Hose Assy 65 08-08FJ/08FJ
6	13P71	2	Hose Assy 70 08-08FJ/08FJ90



Power Pack- SERVICE PARTS				SL-75
ITEM	PART #	QTY	DESCRIPTION	
1	11P24	4	Adp Hyd 08MJ/08MJ 90	
2	13P68	2	Hose Assy 17.5 08-08FJ/08FJ	
3	13P69	2	Hose Assy 28 08-08FJ/08FJ	
4	22P68	1	Hyd Power Unit, 24V	
5	22P79	1	Access Gasket, Power Pack	
6	22P80	1	Access Plate, Power Pack	
7	22P81	2	Adhesive Gasket, 5/8W x 3/8H	
8	40P48	1	12V/24V Series Parallel Switch	
9	91P28	4	Draw Latch w/ Strike Plate	



POWER PACK ELECTRICAL WIRING

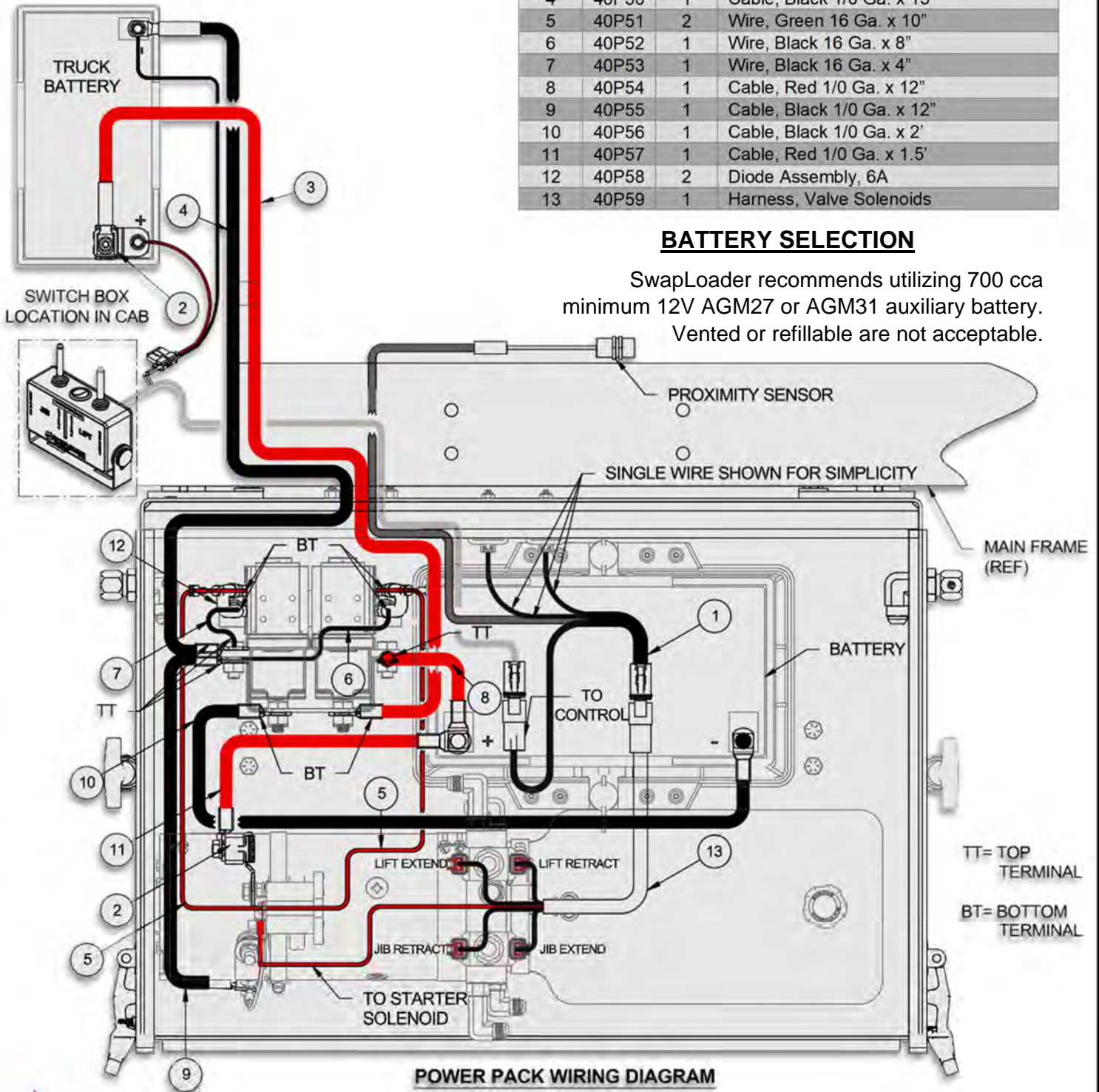
7. Locate the nearest truck battery to the Power Pack, this will be the battery the power pack will tie in to. Install the provided 350A fuse to the positive terminal of this battery.

Note: Do not connect the controller to the auxiliary battery within the Power Pack enclosure.

Hyd Hose install – Electrical Service Parts				SL-75
ITEM	PART #	QTY	DESCRIPTION	
1	13P61	1	Proximity Sensor w/ Harness	
2	40P47	2	Fuse Kit, 350A	
3	40P49	1	Cable, Red 1/0 Ga. x 13'	
4	40P50	1	Cable, Black 1/0 Ga. x 13'	
5	40P51	2	Wire, Green 16 Ga. x 10"	
6	40P52	1	Wire, Black 16 Ga. x 8"	
7	40P53	1	Wire, Black 16 Ga. x 4"	
8	40P54	1	Cable, Red 1/0 Ga. x 12"	
9	40P55	1	Cable, Black 1/0 Ga. x 12"	
10	40P56	1	Cable, Black 1/0 Ga. x 2'	
11	40P57	1	Cable, Red 1/0 Ga. x 1.5'	
12	40P58	2	Diode Assembly, 6A	
13	40P59	1	Harness, Valve Solenoids	

BATTERY SELECTION

SwapLoader recommends utilizing 700 cca minimum 12V AGM27 or AGM31 auxiliary battery. Vented or refillable are not acceptable.

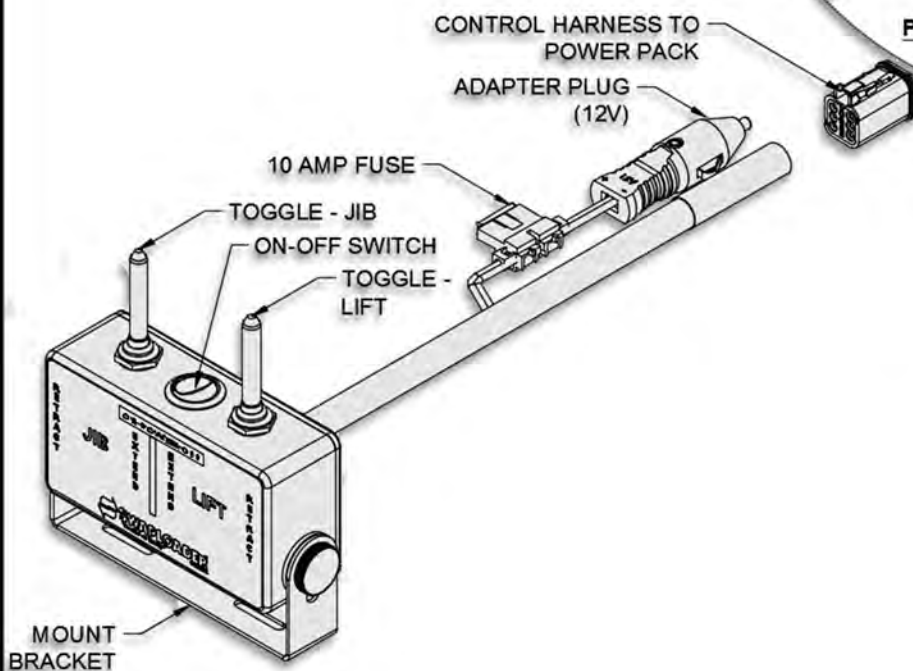
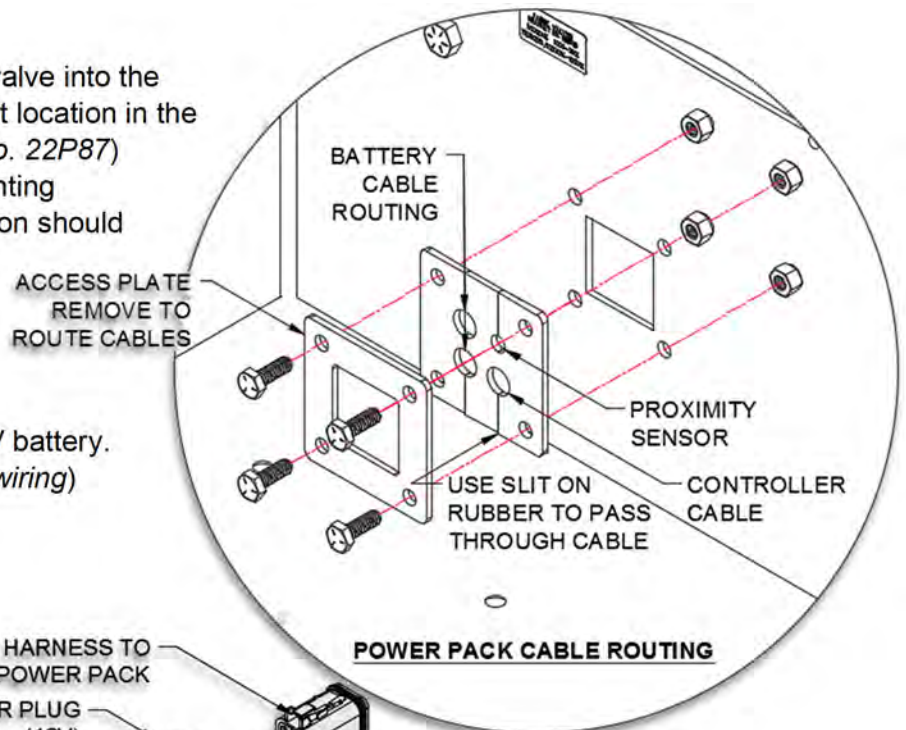


POWER PACK WIRING DIAGRAM

8. The following connections will need to be made after installing the auxiliary AGM 27 or AGM 31 battery inside of the Power Pack enclosure:
 - a. Red series parallel switch lead and red motor starter lead to the positive aux battery terminal
 - b. Connection of the male connector of proximity sensor harness (*Pt. No. 13P61*) to the valve solenoid harness (*Pt. No. 40P59*).
 - c. Connection of the female connector to the male connector of the switch box harness
 - d. Connection of the front positive series parallel flying lead to the positive terminal of the fused positive terminal on the truck battery
 - e. Connection of the left side negative series parallel flying lead to the negative terminal of the truck battery.

Cables entering the Power Pack enclosure should be routed up into the enclosure to prevent moisture from following the cable into the enclosure. When this is not possible a cable tie should be put on the cable or harness 1/2" from entering the enclosure to divert moisture.

9. Route control harness from valve into the truck cab. Determine the best location in the cab for the switch box (*Pt. No. 22P87*) location and install with mounting screws (included). The location should be such that the controls can be easily reached while operating the truck.
10. Insert power adapter into 12V outlet or hardwire to 12V battery. (see wiring diagram for hardwiring)



11. Route battery cables to either the front of cab or the closest battery available. The Power Pack requires 24 V to function. An additional battery will be required during install.

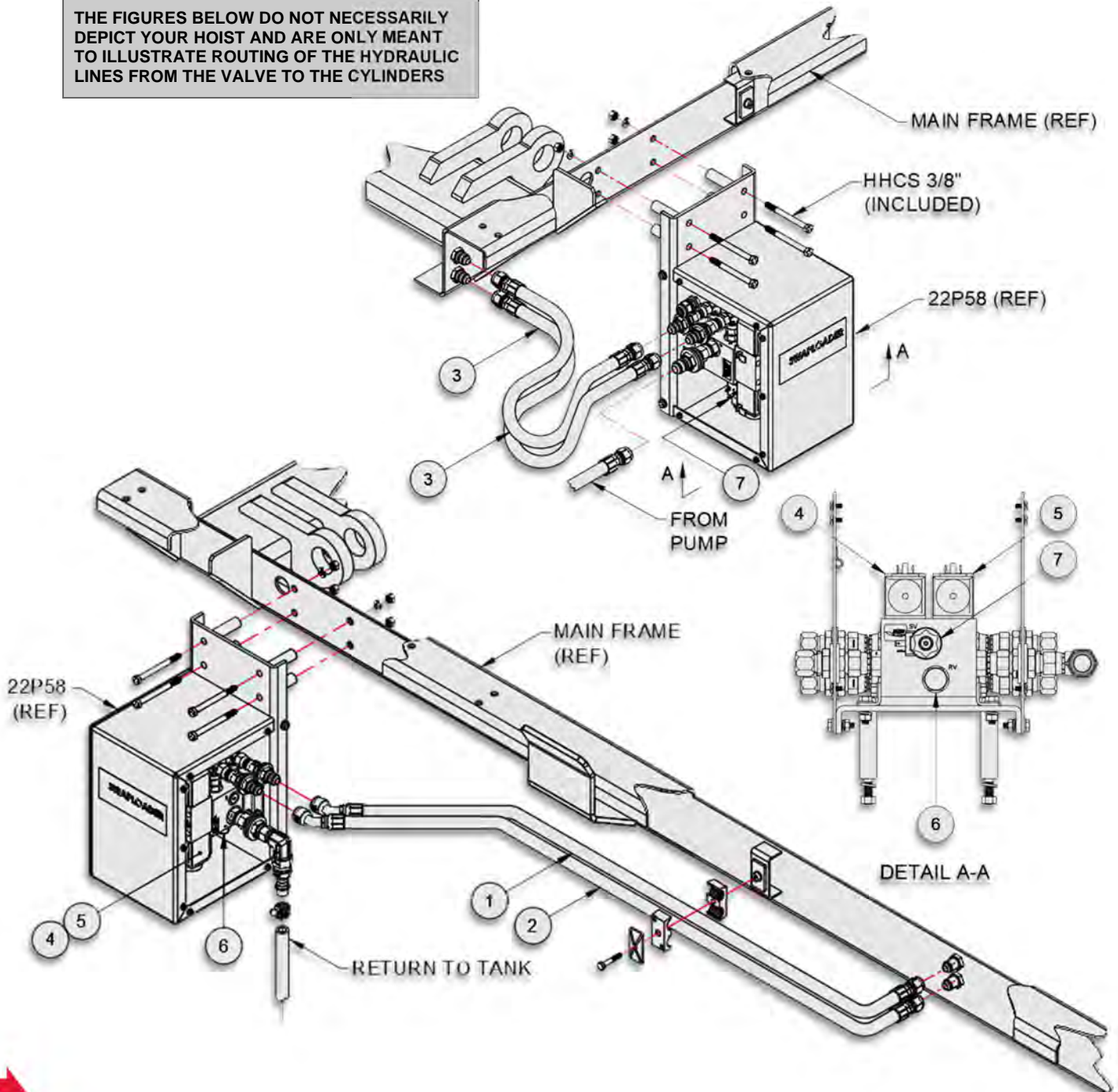
EHV INSTALLATION

1. Review all directions and diagrams provided before starting the **Electric over Hydraulic Valve** Installation.
2. Mount the 22P58 EHV to the hoist's Main Frame and attach all hoses, hose clamp assemblies and fittings as shown on Pgs. 6-5 through 6-7 (also see Illustrations).

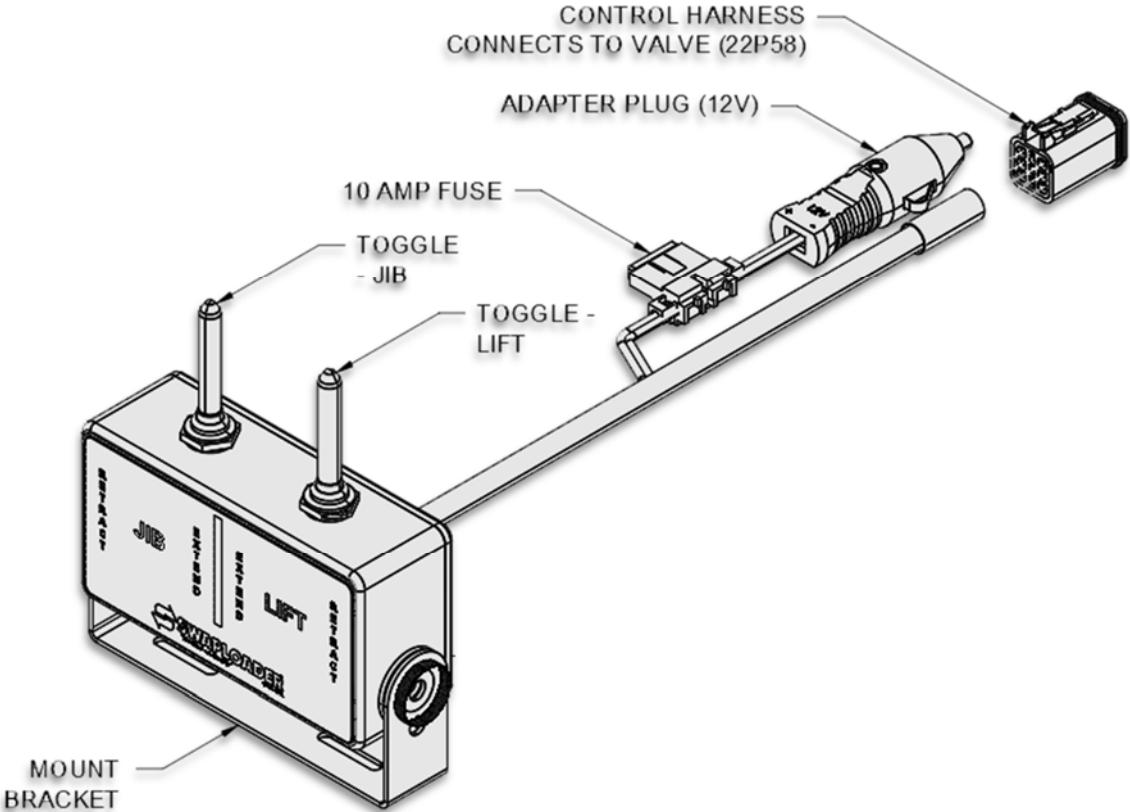
Electric Over Hyd. Valve - SERVICE PARTS				SL-75
ITEM	PART #	QTY	DESCRIPTION	
1	13P36	1	Hose Assy 83.5 08-08FJ/08FJ45	
2	13P37	1	Hose Assy 86 08-08FJ/08FJ5	
3	13P62	2	Hose Assy 45 08-08FJ/08FJ	
4	22P82	1	Solenoid Operated Valve, Coil	
5	22P83	1	Solenoid Operated Valve, Spool	
6	22P84	1	Relief Valve Cartridge (3250)	
7	22P85	1	Dump Valve	

NOTE:

THE FIGURES BELOW DO NOT NECESSARILY DEPICT YOUR HOIST AND ARE ONLY MEANT TO ILLUSTRATE ROUTING OF THE HYDRAULIC LINES FROM THE VALVE TO THE CYLINDERS



- 3. Route control harness from valve into the truck cab. Determine the best location in the cab for the control box location and install with mounting screws (included). The location should be such that the controls can be easily reached while operating the truck.

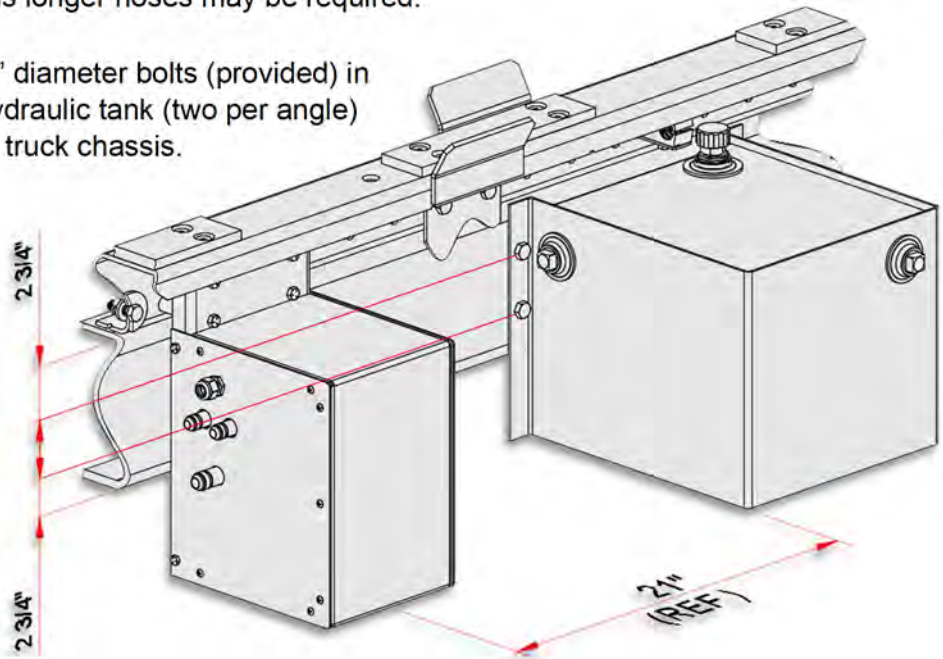


HYDRAULIC TANK INSTALLATION

1. Select a location to mount the hydraulic tank. Reference the illustration below for the suggested location of the hydraulic tank to the rear of the EHV valve assembly on the left-hand side of the truck. The hydraulic hoses have been sized for the tank to be mounted in this general area. The tank can be located on the right-hand driver's side or behind the cab, if necessary, which means longer hoses may be required.

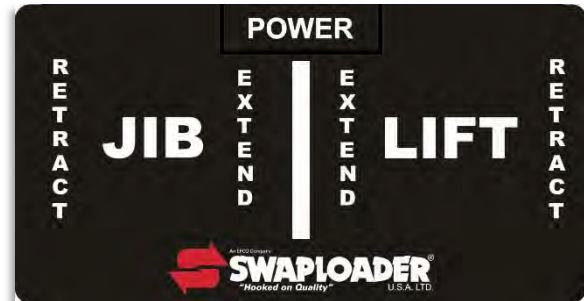
2. Drill four (4) holes for 1/2" diameter bolts (provided) in the mount angle of the hydraulic tank (two per angle) and the frame rails of the truck chassis.

Mount the hydraulic filter. Install the hydraulic return hose and the hose barb fitting between the filter and the EHV valve assembly as shown on Pg. 4-2 of the manual. The hose length can be shortened if necessary. Secure the hose to the barb fittings with the hose clamps provided.



START UP PROCEDURE

1. Fill the hydraulic tank with hydraulic oil (see oil specification in Section IV: Maintenance.)
2. Operate the cylinders at full stroke five to ten times to bleed the air from the lines and cylinders. The cylinders were filled with oil during testing at the factory, but some seepage may have occurred during shipping and installation. Refill the hydraulic tank, if needed, during this sequence and do not let the pump run without oil.
3. Check for leaks and tighten fittings as necessary.
4. Verify the movement of the control levers corresponds to the movement of the cylinders per the figure below.
5. Install all safety decals and product decals as shown on *Pg. 3-9* after final installation and painting have been completed.
6. Fill out the Product Registration form online at [Truck-Mounted Product Registration - Swaploader](#)



NOTE:

FAILURE TO FILL OUT AND SUBMIT PRODUCT REGISTRATION WITHIN 15 DAYS OF INSTALLATION MAY POSSIBLY VOID THE WARRANTY.



- CAUTION** The SwapLoader hoist must be used with bodies or containers that properly fit the front hook and the rear hold-downs (see Subframe Critical Dimensions in the Technical Guide). If possible, pick up one of the containers that will be used with the SwapLoader hoist and verify the following:
- Outside dimensions of the long sills match the guiding rollers on the hoist.
 - The front hook dimensions are correct for the hoist.
 - The rear hold-downs of the container latch into the hold-downs on the hoist.
 - Check for any interference between the container and any part of the hoist (i.e.: Hydraulic tank, hydraulic tubing or hose, hydraulic valve, etc.)

This Page Intentionally Left Blank

PARTS

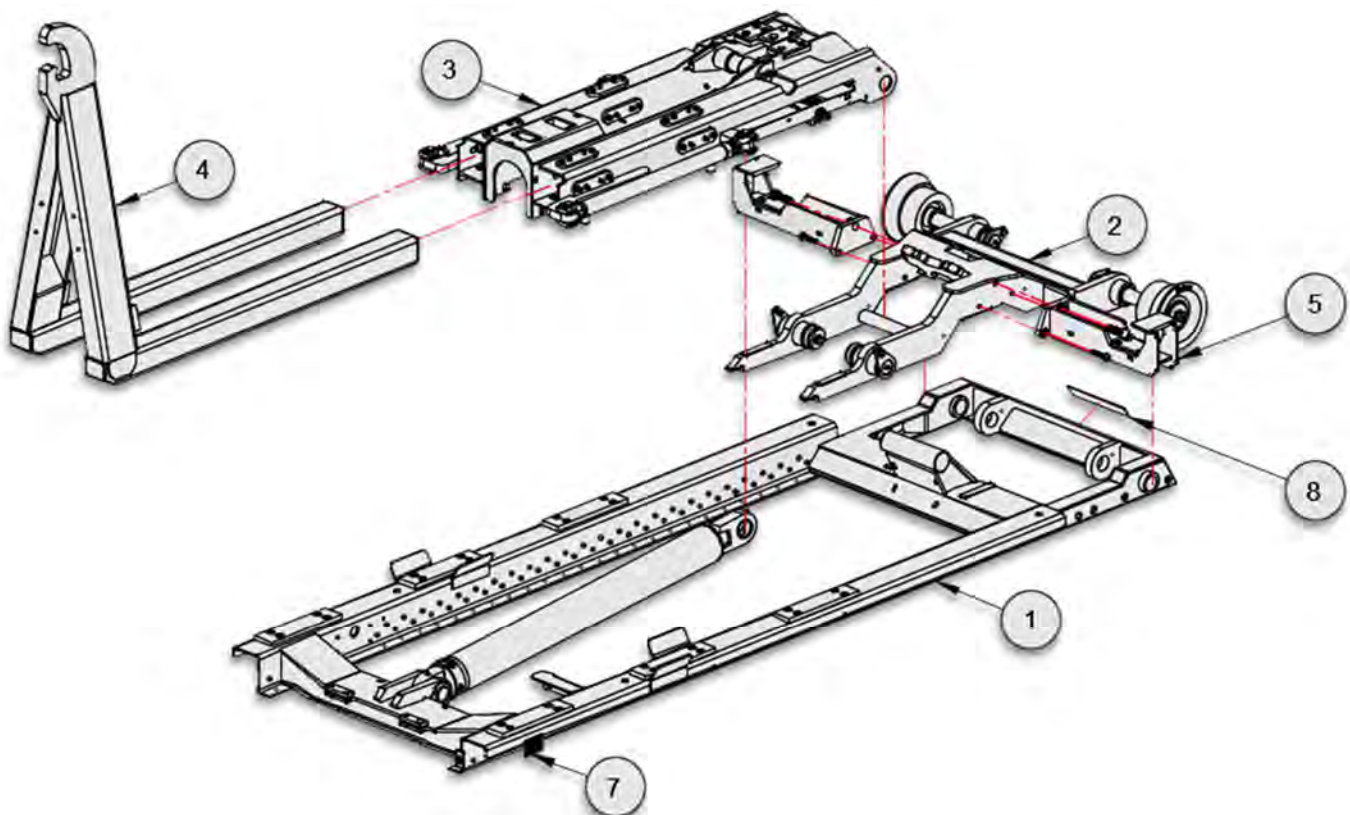
This Page Intentionally Left Blank

**DISC-LOCK WASHER
TORQUE SPECS**

BOLT SIZE	SAE GR 8 ASS'Y TORQUE (FT-LBS)
3/8	53
7/16	85
1/2	130
5/8	258
3/4	459
7/8	739
1	1108

13H28 - BASE HOIST ASSEMBLY
SL-75

ITEM	PART #	QTY	DESCRIPTION	WT-lb/ea.	WT-lb/all
1	13H29	1	Main Frame Sub-Assembly	466.79	466.79
2	13H30	1	Pivot Joint Sub-Assembly	276.01	276.01
3	13H31	1	Outer Tube Sub-Assembly	271.12	271.12
4	13H32	1	Jib Weldment	179.63	179.63
5	13H33	2	Body Lock Sub-Assembly	24.76	49.52
6	91H34	1	Hyd Base Cyl Circuit	19.82	19.82
7	91P22	1	Serial Tag	0.02	.02
8	90P90	1	Name Plate Insert	0.10	0.10


SL-75 BASE HOIST

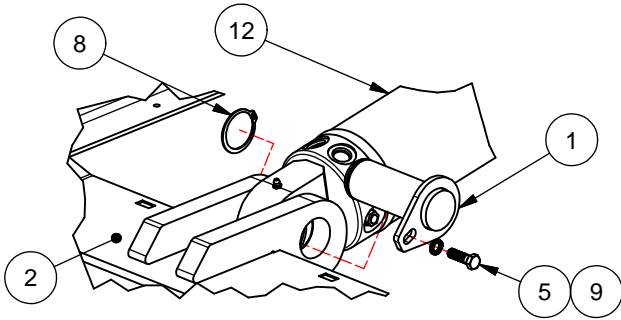
**DISC-LOCK WASHER
TORQUE SPEC'S**

BOLT SIZE	SAE GR 8 ASSY TORQUE (FT-LBS)
3/8	53
7/16	85
1/2	130
5/8	258
3/4	459
7/8	739
1	1108

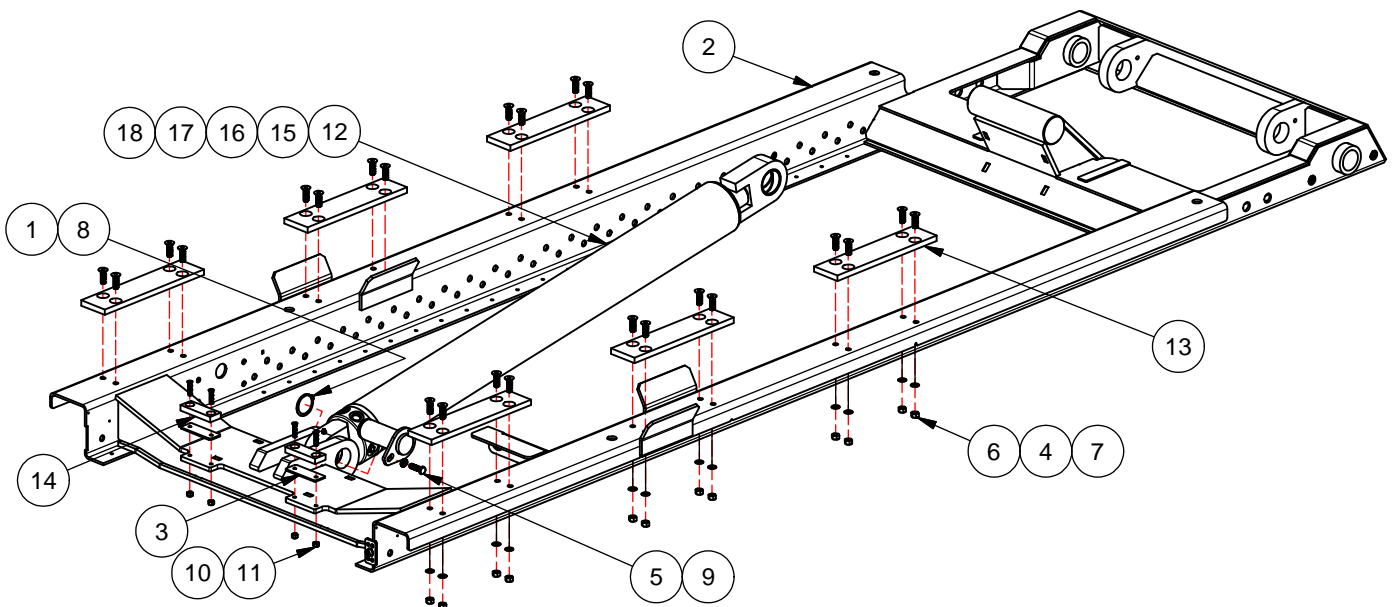
NOTE:
APPLY LOCTITE 243 (BLUE)
TO ALL BOLTS.

13H29 - MAIN FRAME SUB-ASSEMBLY, SL-75 ~ REV A

ITEM	PART #	QTY	DESCRIPTION	WT-lb/ea
1	11H09	1	PIN, MF/CYL 1-3/4 x 4-3/8 ZP	3.63
2	13H34	1	MAIN FRAME WELDMNT, SL-75	335.14
3	26H71	2	SHIM, JIB STABILIZER	0.15
4	00755	24	WASHER, LOCK 3/8	0.03
5	00P13	1	HHCS 3/8-16 UNC x 1-1/4 GR8	0.05
6	00P14	24	NUT, HEX 3/8-16 UNC GR8	0.02
7	00P68	24	FHCS 3/8-16 UNC x 1-1/4 SS	0.04
8	00P97	1	SNAP RING, EXT 1.75	0.12
9	01P28	1	WASHER, DISC LOCK 3/8 PR	0.00
10	01P62	4	FHCS 1/4-20 UNC x 1-1/4	0.02
11	01P63	4	NUT, NYLOCK 1/4-20 UNC GR8	0.01
12	22P02	1	HYD CYL 4x2x38	122.90
13	90P71	6	WEAR PAD, 2-3/4 x 1/2 x 11-3/4	0.63
14	91P21	2	WEAR PAD 1-1/4x1/2x3-1/2	0.08
SERVICE PARTS PER LIFT CYLINDER				
15	21P11	2	C'BAL CART, 3700 PSI CBCA-LHN	0.35
16	22P03	1	SEAL KIT, LIFT CYL 75/105/110	0.20
17	22P04	1	RETURN LINE, CYL 75/105/110	2.00
18	22P30	2	HYD CYL BRG, BRZ 1.75ID	1.00



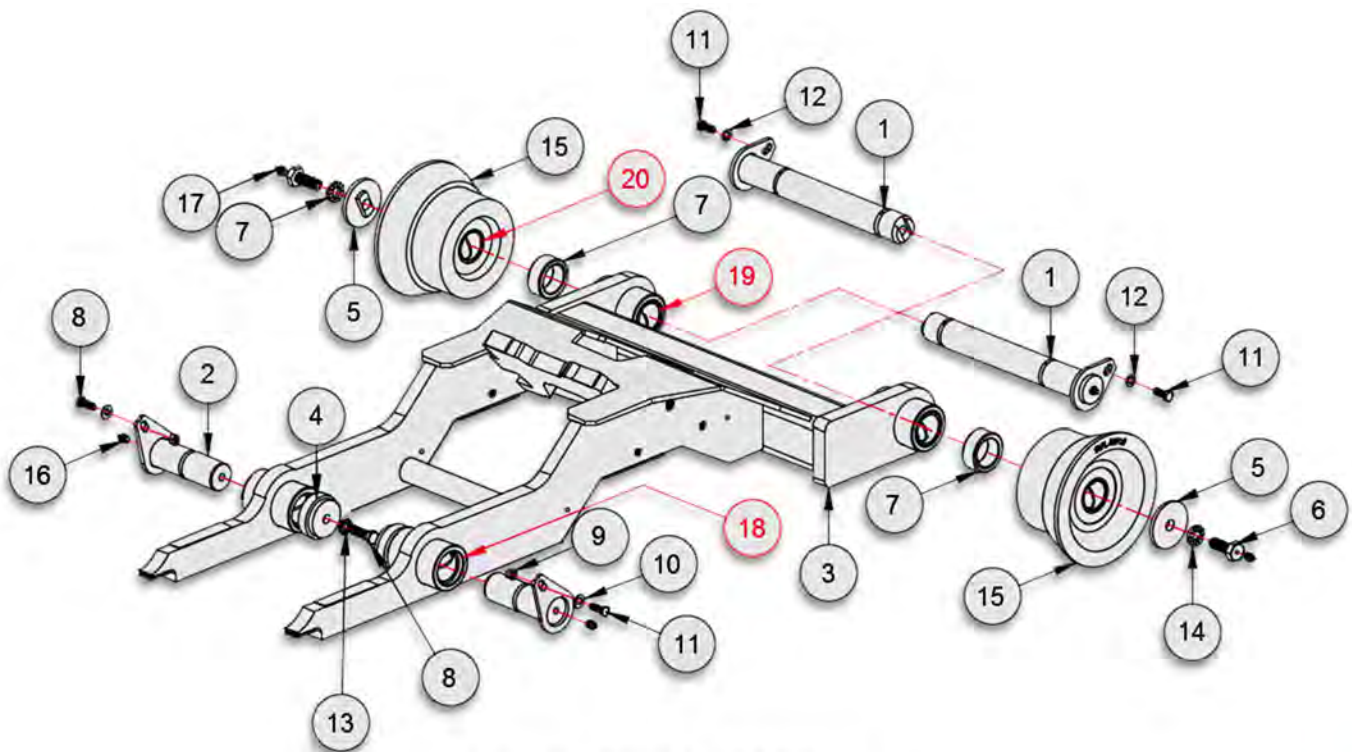
LIFT CYLINDER PIN DETAIL



MAIN FRAME ASSEMBLY, SL-75

DISC-LOCK WASHER TORQUE SPECS	
BOLT SIZE	SAE GR 8 ASS'Y TORQUE (FT-LBS)
3/8	53
7/16	85
1/2	130
5/8	258
3/4	459
7/8	739
1	1108

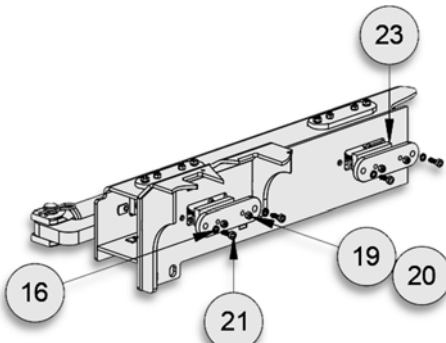
13H30 – PIVOT JOINT ASSEMBLY					SL-75	
ITEM	PART #	QTY	DESCRIPTION	WT-lb/ea.	WT-lb/all	
1	11H10	2	Pin, PJ/MF 1-3/4 x 13-1/4	9.39	18.78	
2	12H62	2	Pin, PJ/OT 1-3/4 x 5-3/16	3.86	7.72	
3	13H35	1	Pivot Joint Weldment	174.40	174.40	
4	13H41	2	Pin Cap Weldment	0.94	1.88	
5	22H35	2	Pin Cap, 1/2 x 3	0.53	1.06	
6	22H36	2	HHCS 5/8-11 UNC x 1-3/4 GZ	0.23	0.46	
7	26H50	2	Roller Spacer	0.67	1.34	
8	00P01	2	HHCS 1/2-13 UNC x 1-1/2 Gr8	0.11	0.22	
9	00P34	2	Nut, Lock 3/8-16 UNC	0.02	0.04	
10	00P36	2	Washer, Flat 3/8 HT	0.01	0.02	
11	00P62	4	HHCS 3/8-16 UNC x 1 Gr8	0.04	0.16	
12	01P28	2	Washer, Disc Lock 3/8 Dia Pr	0.01	0.06	
13	01P30	2	Washer, Disc Lock 1/2 Pr	0.02	0.04	
14	01P31	2	Washer, Disc Lock 5/8 Pr	0.03	0.06	
15	80P10	2	Roller Assy, 6-1/4"x1-3/4ID	34.84	69.68	
16	90P03	4	Zerk, Grease - 1/8 NPT	0.02	0.08	
17	90P20	2	Zerk, Grease - 1/8-28 NPT	0.02	0.04	
BEARINGS						
18	23H09	2	Brz Brg, 2-1/8ODx1-3/4IDx3-1/4 lg	1.09	2.18	
19	23H11	2	Brz Brg, 2-1/8ODx1-3/4IDx4 lg	1.35	2.70	
20	50P14	2	Brz Brg, 2-1/8ODx1-3/4IDx3 lg	1.01	2.02	



PIVOT JOINT ASSEMBLY

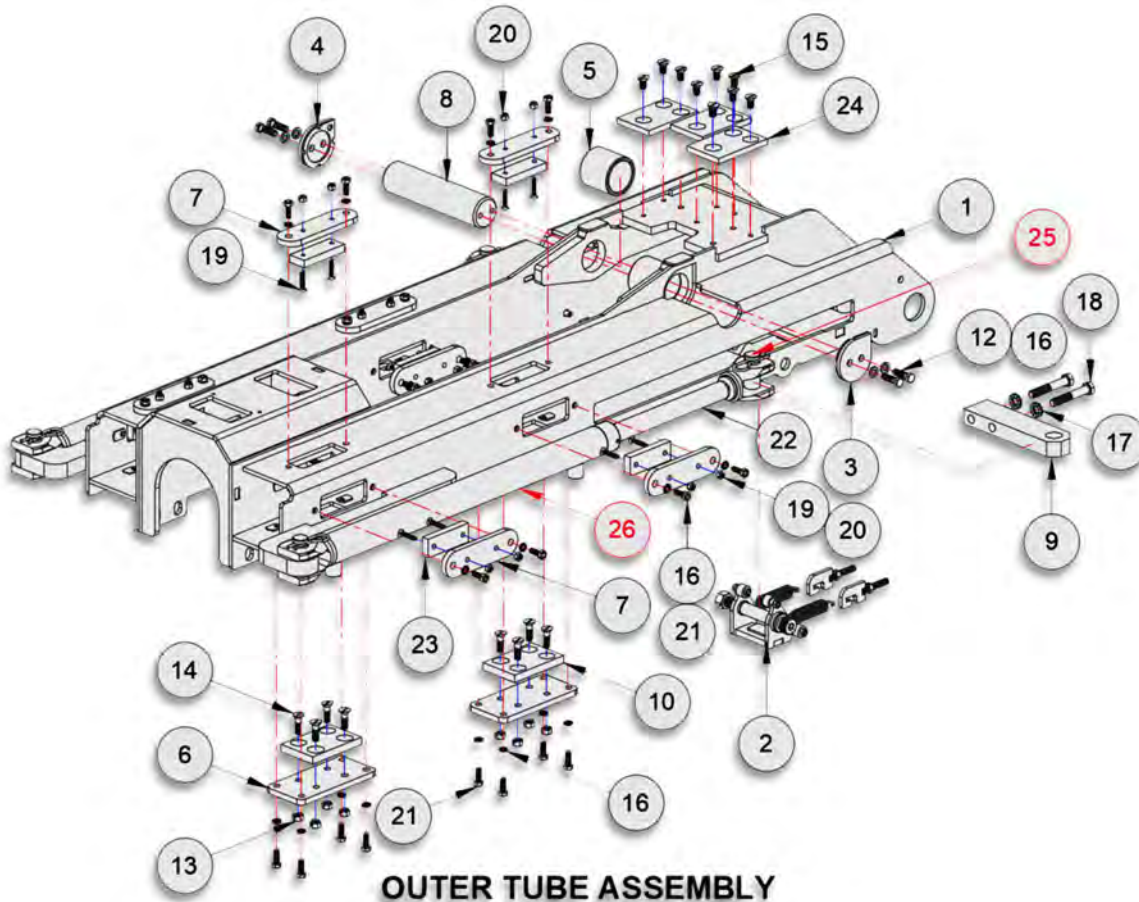
DISC-LOCK WASHER TORQUE SPECS	
BOLT SIZE	SAE GR 8 ASS'Y TORQUE (FT-LBS)
3/8	53
7/16	85
1/2	130
5/8	258
3/4	459
7/8	739
1	1108

Not Shown



INSIDE WEAR PAD DETAIL

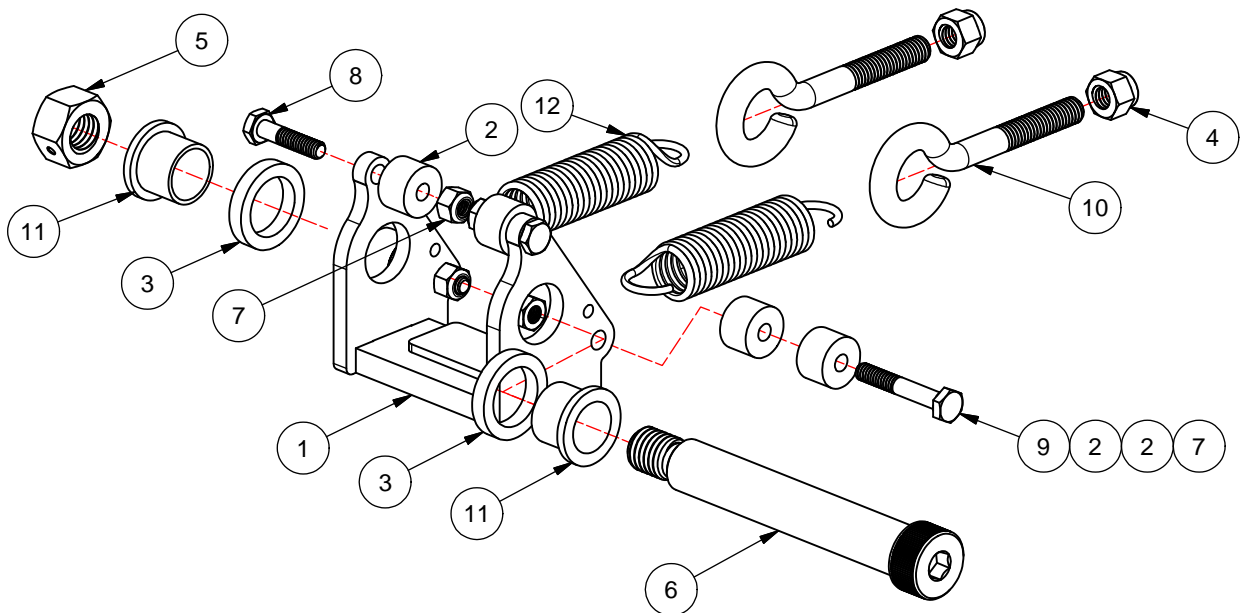
13H31 – OUTER TUBE SUB-ASSEMBLY				SL-75	
ITEM	PART #	QTY	DESCRIPTION	WT-lb/ea.	WT-lb/all
1	13H36	1	Outer Tube Weldment	181.69	181.69
2	13H42	2	Safety Latch Assembly	2.85	5.70
3	13H45	1	Pin Cap Weldment, L.H.	0.53	0.53
4	13H46	1	Pin Cap Weldment, R.H.	0.53	0.53
5	26H36	2	Cylinder Pin Sleeve	1.15	2.30
6	26H53	4	Wear Pad Plate Lg, OT	2.08	8.32
7	26H54	12	Wear Pad Plate, OT	1.05	12.6
8	26H57	1	Pin OT/Cyl 2 x 8	7.01	7.01
9	26H58	2	Jib Connection Bar	3.80	7.60
10	60H11	4	Wear Pad, 2-3/4x1/2x4-1/4	0.21	0.84
11	00837	4	Pin, Cotter 3/16 Dia x 2	0.02	0.08
12	00P13	4	HHCS 3/8-16 UNC x 1-1/4 Gr8	0.05	0.20
13	00P43	16	Nut, Nylock 3/8-16 UNC Gr8	0.02	1.76
14	00P68	16	FHCS 3/8-16 UNC 1-1/2	0.11	0.80
15	00P79	9	FHCS 3/8-16 UNC x 3/4 Brass	0.03	0.27
16	01P28	4	Washer, Disc Lock 3/8 Dia Pr	0.01	0.04
17	01P30	4	Washer, Disc Lock 1/2 Dia Pr	0.02	0.08
18	01P48	4	HHCS 1/2-13 UNC x 3 Gr8	0.19	0.76
19	01P62	24	FHCS 1/4-20 UNC x 1-1/4 Brass	0.01	0.24
20	01P63	24	Nut, Nylon 1/4-20 UNC Gr8	0.01	0.24
21	01P74	40	Nut, Nylon 1/4-20 UNC Gr8	0.01	0.24
22	22P66	2	Hyd. Cylinder 2 x1-1/8 x 20	19.29	38.58
23	91P21	12	Wear Pad, 1-1/4x1/2x3-1/2	0.08	0.96
24	91P27	3	Wear Pad, 2-3/4x3/8x4-1/4	0.16	0.48
JIB CYLINDER SERVICE PARTS				22P66	
25	01P72	2	Clevis Pin w/ Clips	0.03	0.06
26	22P71	1	Seal Kit, Cyl (22P66)	0.10	0.10



OUTER TUBE ASSEMBLY

13H42 - PIVOT LOCK SUB-ASSEMBLY, SL-75 ~ REV C

ITEM	PART #	QTY	DESCRIPTION	WT-lb/ea
1	13H43	1	LATCH WDMT, PL 75	1.03
2	26H61	6	BUMPER, PIVOT LOCK	0.01
3	26H62	2	BEARING PLATE, PIVOT LOCK	0.04
4	00P43	2	NUT, NYLOCK 3/8-16 UNC GR8	0.02
5	00P55	1	NUT, LOCK 5/8-11 UNC GR8	0.08
6	01P55	1	SS 5/8-11 UNC x 4-1/2	0.72
7	01P63	4	NUT, NYLOCK 1/4-20 UNC GR8	0.01
8	01P75	2	HHCS 1/4-20 UNC x 1-1/8 GR8	0.02
9	01P76	2	HHCS 1/4-20 UNC x 1-5/8 GR8	0.03
10	02P35	2	EYEBOLT 3/8-16 UNC x 2-1/2	0.18
11	50P29	2	BRZ BRG, 0.75IDX0.75X1.13OD	0.05
12	91P20	2	SPRING, SS 27/32 X 4	0.13



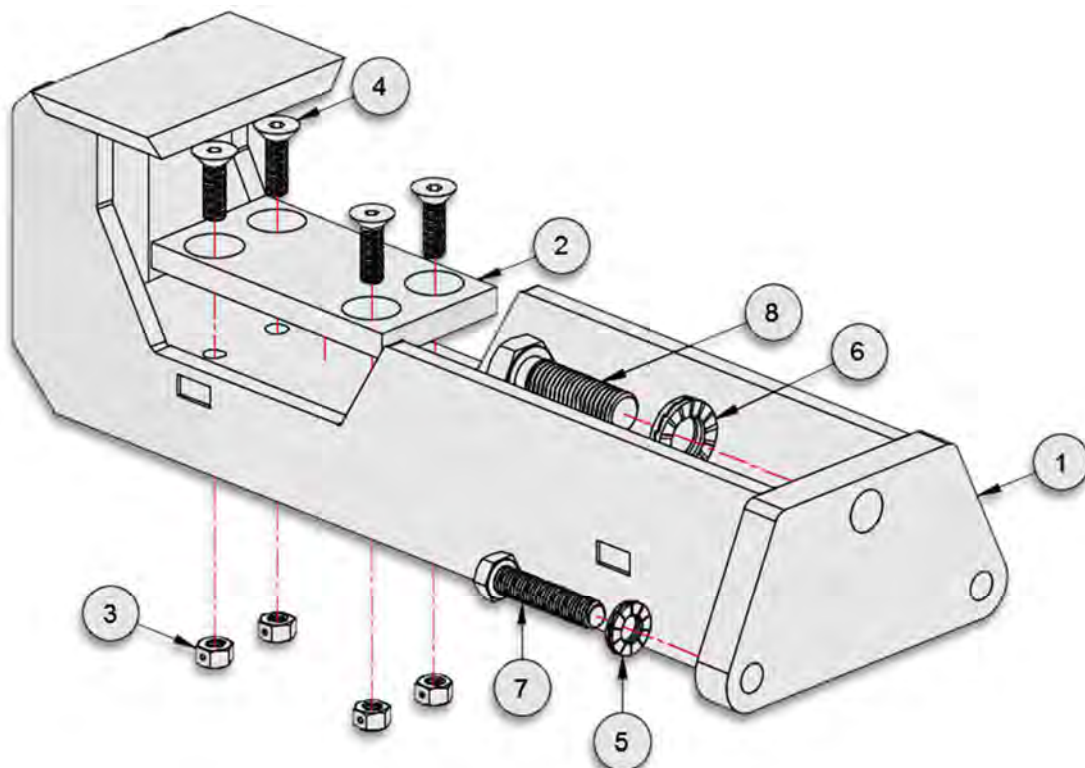
PIVOT LOCK SUB-ASSEMBLY, SL-75

**DISC-LOCK WASHER
TORQUE SPECS**

BOLT SIZE	SAE GR 8 ASS'Y TORQUE (FT-LBS)
3/8	53
7/16	85
1/2	130
5/8	258
3/4	459
7/8	739
1	1108

13H33 – BODY LOCK ASSEMBLY
SL-75

ITEM	PART #	QTY	DESCRIPTION	WT- lb/ea.	WT- lb/all
1	13H37	1	Body Lock Weldment	23.47	23.47
2	80H35	1	Wear Pad, 2-3/4x1/2x5-1/2	0.28	0.28
3	00P34	4	Nut, Lock 3/8-16 UNC	0.02	0.08
4	00P68	4	FSCS 3/8-16 UNC x 1-1/4 SS	0.04	0.16
5	01P30	2	Washer, Disc Lock 1/2 Dia Pr	0.02	0.04
6	01P32	1	Washer, Disc Lock 3/4 Dia Pr	0.06	0.06
7	01P69	2	HHCS 1/2-13 UNC x 2-1/4 Gr8	0.14	0.28
8	01P70	1	HHCS 3/4-10 UNC x 2-1/4 Gr8	0.39	0.39


BODY LOCK ASSEMBLY

**DISC-LOCK WASHER
TORQUE SPECS**

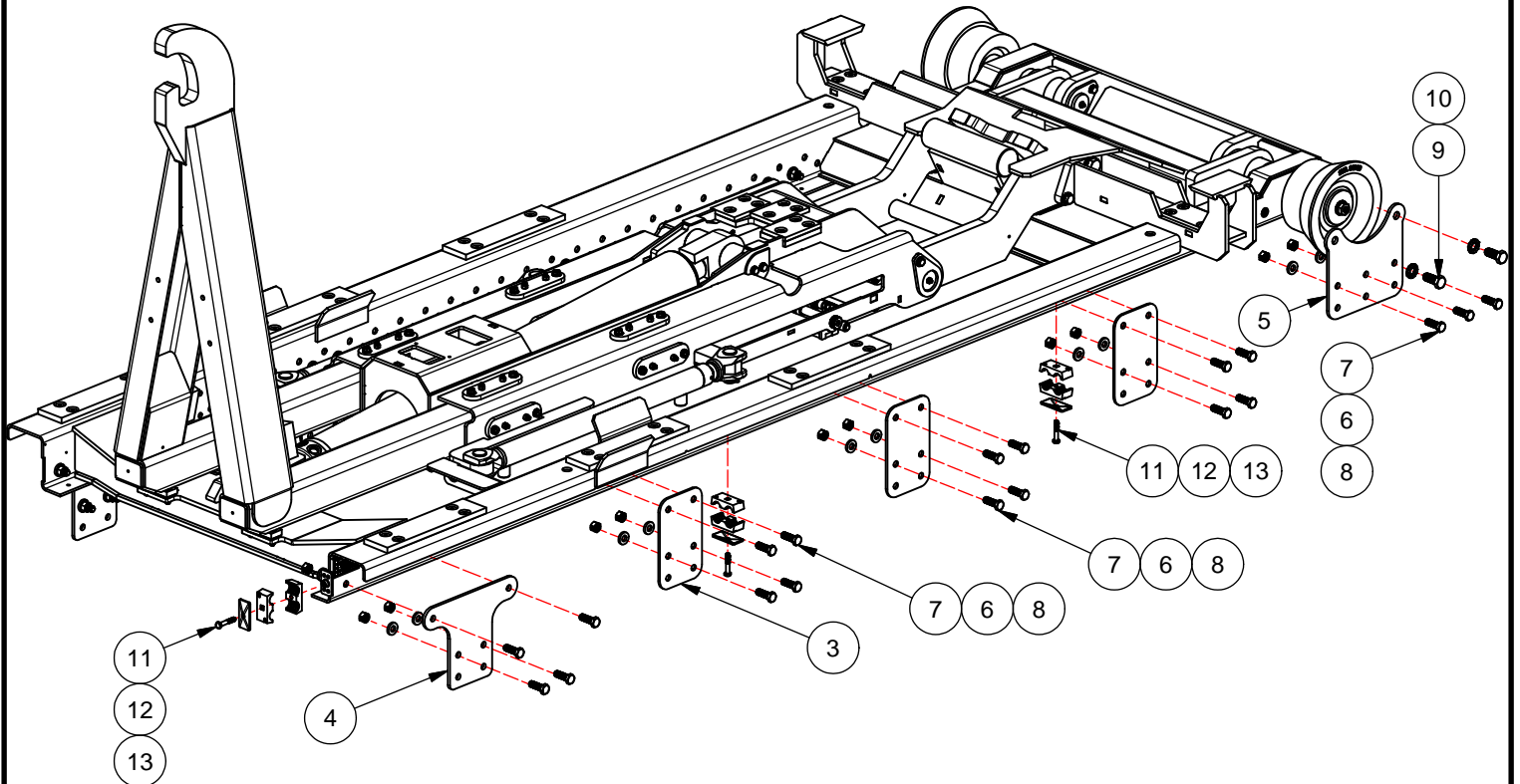
BOLT SIZE	SAE GR 8 ASSY TORQUE (FT-LBS)
3/8	53
7/16	85
1/2	130
5/8	258
3/4	459
7/8	739
1	1108

NOTE:
APPLY LOCTITE 243 (BLUE)
TO ALL BOLTS.

13H38 - HOIST INSTALL KIT, SL-75 ~ REV B

ITEM	PART #	QTY	DESCRIPTION	WT-lb/ea
* 1	13H39	1	PARTS & OP, SL-75	0.00
* 2	13H40	1	DECAL ASSEMBLY, SL-75	0.00
3	25H89	6	MNT BKT, 5x3/16x8-1/4	2.08
4	25H91	2	MNT BKT, 8-1/4x1/4x11	3.68
5	26H74	2	REAR BRACKET	4.26
6	00784	38	WASHER, FLAT 1/2 ZP	0.03
7	00P01	38	HHCS 1/2-13 UNC x 1-1/2 GR8	0.11
8	00P35	38	NUT, LOCK 1/2-13 UNC GRC	0.04
9	00P56	4	HHCS 5/8-11 UNC x 1-1/2 GR8	0.19
10	01P31	4	WASHER, DISC LOCK 5/8 PR	0.03
11	10P63	3	HHCS 5/16-18 UNC x 1-3/4 ZP	0.04
12	10P64	3	COVER PLATE, CLAMP 1/2	0.10
13	10P65	3	CLAMP ASSY, TWIN 7/8	0.07
* 14	91P79	1	ALL MODEL TECH GUIDE	0.00

* ITEM NOT SHOWN

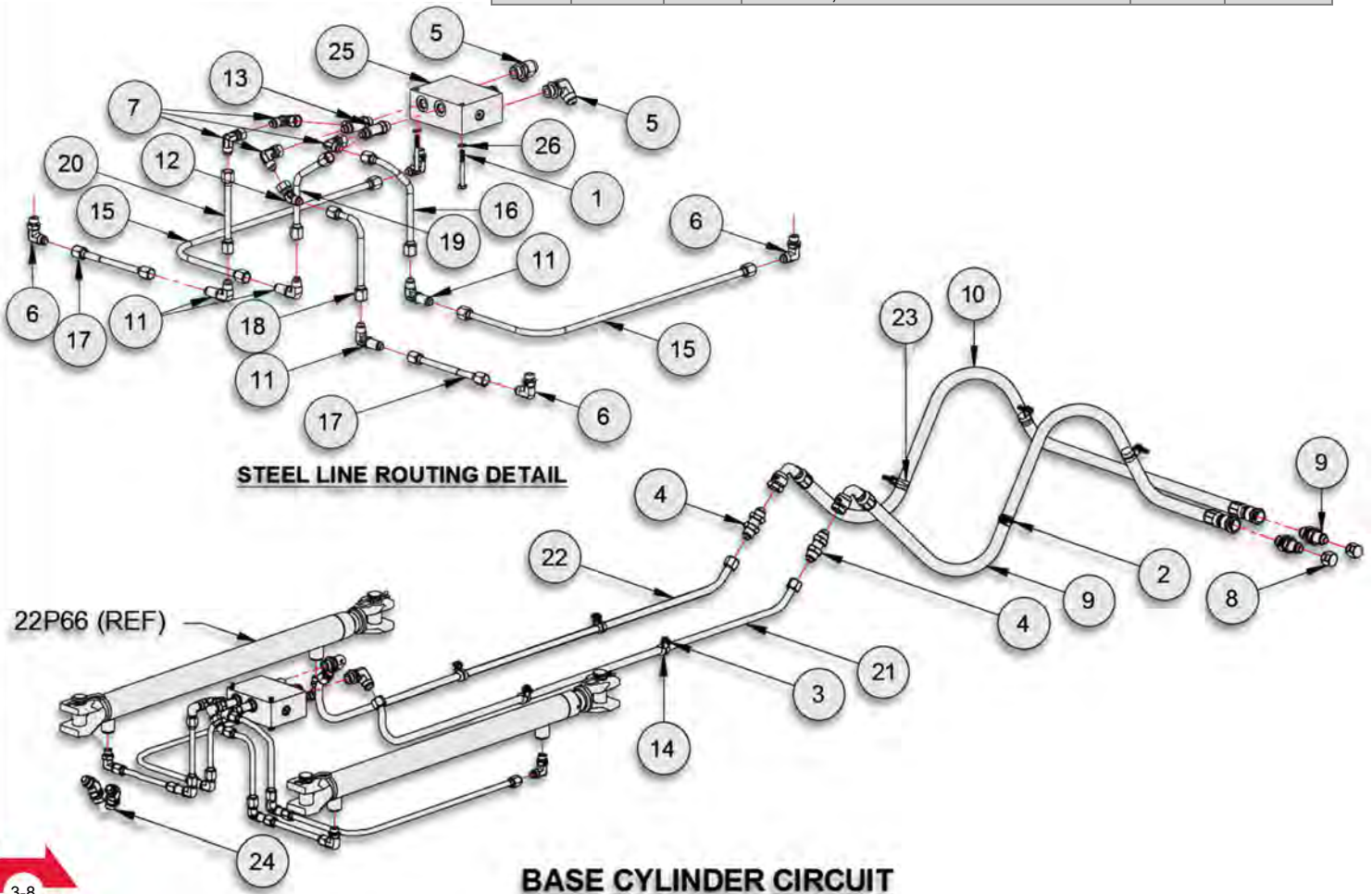


HOIST INSTALL KIT, SL-75

91H34 – BASE CYLINDER CIRCUIT

SL-75

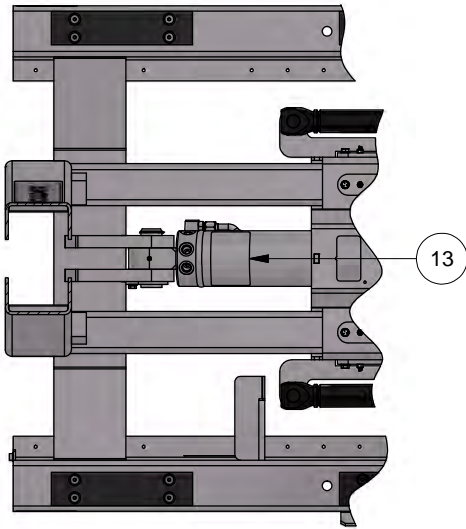
ITEM	PART #	QTY	DESCRIPTION	WT-lb/ea.	WT-lb/all
1	00P47	2	HHCS 1/4-20 UNC x 2-1/4 Gr8	0.04	0.08
2	01P56	4	HHCS 1/4-20 UNC x 1 Gr8	0.02	0.08
3	01P66	4	HHCS 1/4-20 UNC x 1/2 Gr8	0.01	0.04
4	10P43	4	Adp Hyd 08MJ/08MJ BHD	0.28	1.12
5	11P23	2	Adp Hyd 08MJ/08MB 90	0.29	0.58
6	12P49	4	Adp Hyd 06MJ/06MB 90	0.14	0.56
7	12P50	4	Adp Hyd 06MJ/06FJ 90	0.12	0.48
8	13P14	2	Adp Hyd MJIC Cap	0.03	0.06
9	13P43	1	Hose Assy 53 06-08FJ/08FJ90	1.87	1.87
10	13P44	1	Hose Assy 61 06-08FJ/08FJ90	1.87	1.87
11	13P49	4	Adp Hyd 06MJ/06MJ BHD 90	0.16	0.64
12	13P50	1	Adp Hyd 06FJ/06MJ 45	0.10	0.10
13	13P51	2	Adp Hyd 06MJ/06MJ/06MB	0.18	0.36
14	13P52	4	Hyd Hose Loop Clamp, 1/2	0.05	0.20
15	13P53	2	Hyd Tube, 3/8 x 16-1/64	0.34	0.68
16	13P54	1	Hyd Tube, 3/8 x 5-15/32	0.17	0.17
17	13P55	2	Hyd Tube, 3/8 x 5-19/32	0.14	0.28
18	13P56	1	Hyd Tube, 3/8 x -5/8	0.15	0.15
19	13P57	1	Hyd Tube, 3/8 x 5-5/16	0.15	0.15
20	13P58	1	Hyd Tube, 3/8 x 4-31/64	0.13	0.13
21	13P59	1	Hyd Tube, Extend 1/2 x 42-1/8	0.77	0.77
22	13P60	1	Hyd Tube, Retract 1/2 x 42-1/8	0.78	0.78
23	13P63	4	Hyd hose Loop Clamp, 5/8	0.05	0.20
24	13P64	2	Adp Hyd 08MJ/08MB 45	0.24	0.48
25	22P67	1	Hyd Manifold, Cbal/Relief	0.98	0.98
26	88715	2	Washer, Lock 1/4 Dia	0.01	0.02



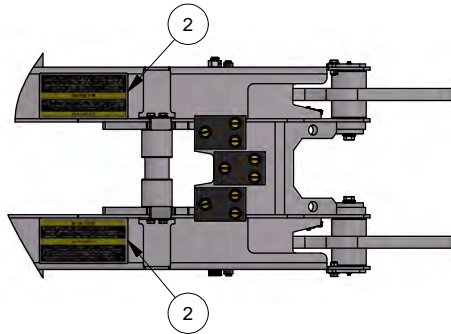
PARTS PER 13H40 ASSEMBLY - REV B

ITEM	QTY	PART #	DESCRIPTION	WT-lb./ea.
1	2	90P07	DECAL, OP & SERVICE MANUAL	0.00
2	2	90P08	DECAL, HOIST/BODY	0.00
3	1	90P09	DECAL, HYD OIL	0.00
4	1	90P10	DECAL, HYD OIL FLAMMABLE	0.00
5	2	90P11	DECAL, HOIST FALLING	0.00
6	1	90P12	LEVER CONTROL DECAL	0.01
7	1	90P13	DECAL, SAFETY INSTRUCTIONS	0.00
8	2	90P14	DECAL, SWAPLOADER	0.01
9	1	90P18	DECAL, RELIEF VALVE	0.00
10	1	90P78	DECAL, HIGH-PRESSURE FLUIDS	0.00
11	2	91P06	DECAL, LUBRICATION POINTS	0.00
12	4	91P24	DECAL, SL-75	0.00
13	1	91P52	DECAL, COUNTERBALANCE VALVE	0.00
14	1	91P66	DECAL, OUTSIDE CONTROLS	0.00

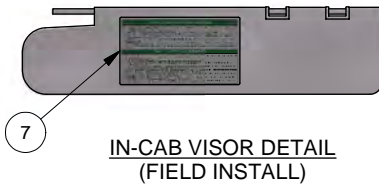
NOT USED



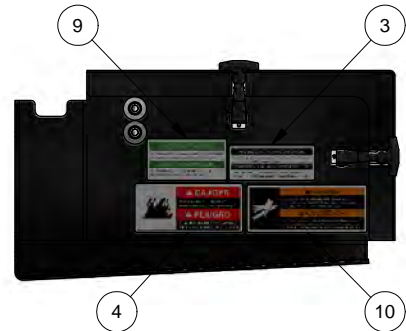
MAIN FRAME TOP VIEW



OUTER TUBE TOP VIEW



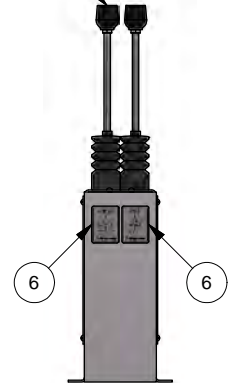
IN-CAB VISOR DETAIL
(FIELD INSTALL)



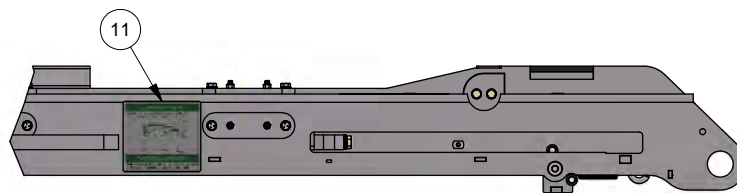
POWER PACK DETAIL
(FIELD INSTALL)

APPLY TO TANK WHEN POWER PACK IS NOT APPLICABLE

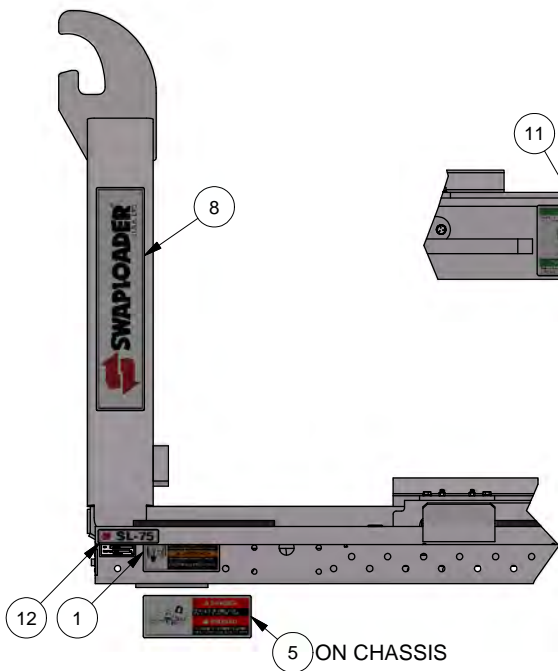
CONTROL LEVER
(REF)



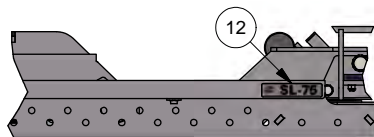
IN-CAB CONSOLE DETAIL
(FIELD INSTALL)



OUTER TUBE DETAIL
(TYPICAL ON BOTH SIDES)



MAIN FRAME DETAIL
(TYPICAL ON BOTH SIDES)



DECAL ASSEMBLY, SL-75

This Page Intentionally Left Blank

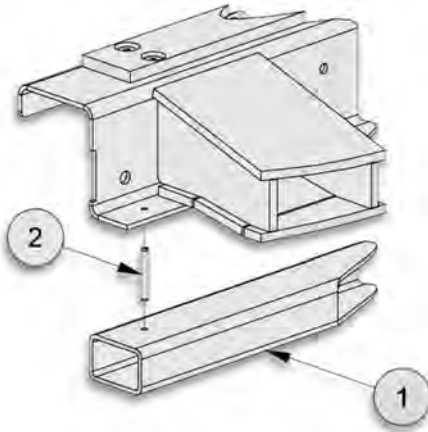
OPTIONS

This Page Intentionally Left Blank

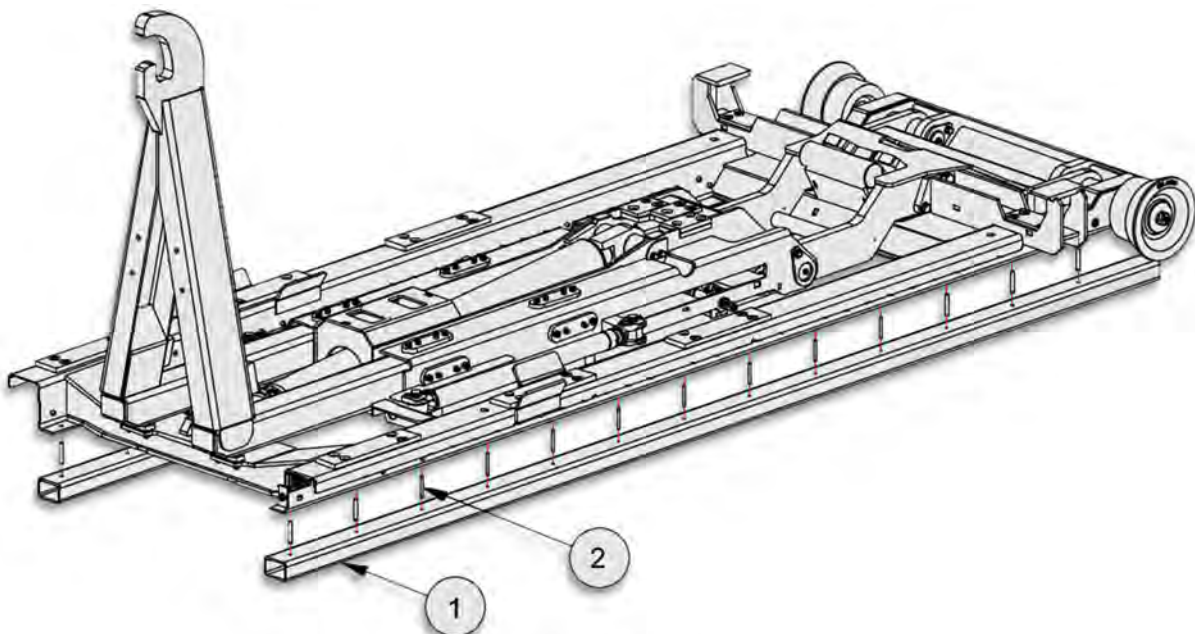
13H49 – SPACER KIT

SL-75

ITEM	PART #	QTY	DESCRIPTION	WT-lb/ea.	WT-lb/all
1	26H70	2	Spacer Tube, 2x3x3/16 Wa x 120	55.75	111.50
2	01P71	30	Pin, Spring	0.74	0.74



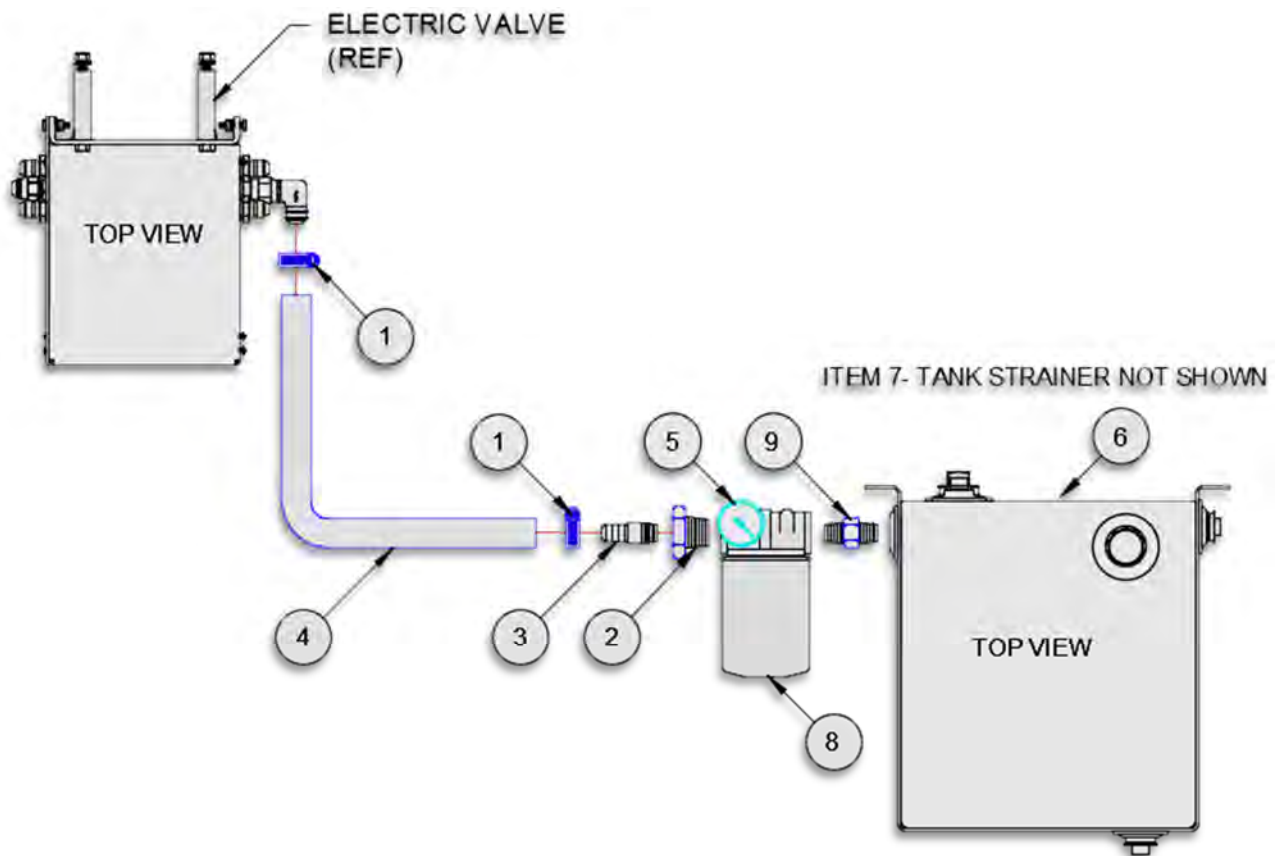
SPRING PIN DETAIL



SPACER KIT

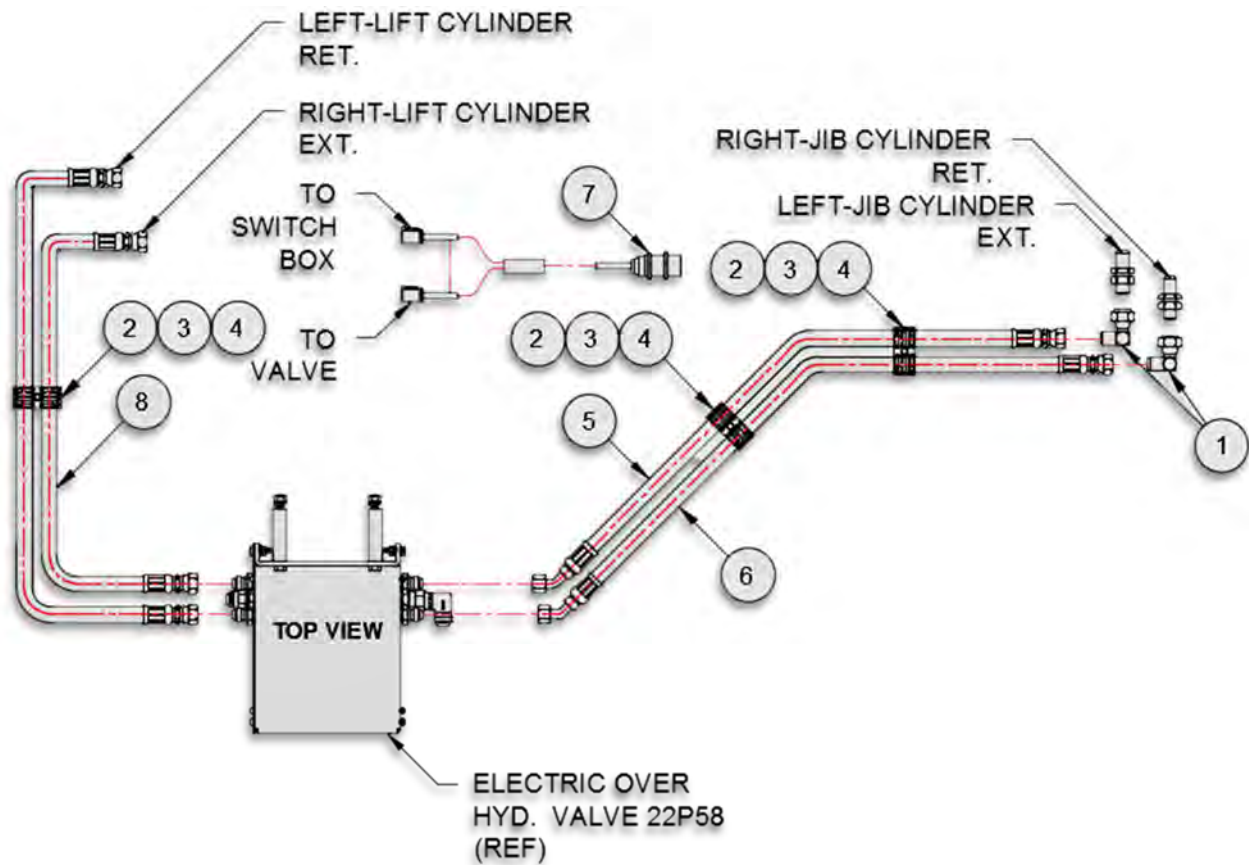
91H36 – TANK CIRCUIT (EHV) SL-75

ITEM	PART #	QTY	DESCRIPTION	WT-lb/ea.	WT-lb/all
1	11P20	2	Worm Gear Clamp (HSS16)	0.10	0.20
2	12P21	1	Adp Hyd 16MP/12FP	0.30	0.30
3	12P22	1	Adp Hyd 12HB/12MP	0.30	0.30
4	12P29	1	Hose 3/4 x 24 LP	0.88	0.88
5	20P64	1	Hyd Filter Indicator	0.01	0.01
6	22P73	1	Hyd. Tank, - 7 Gallon	36.00	36.00
7	22P74	1	Tank Mounted Strainer	1.20	1.20
8	22P75	1	Hyd Filter	2.30	2.30
9	13P67	1	Adp Hyd 16MP/16/MP	0.70	0.70



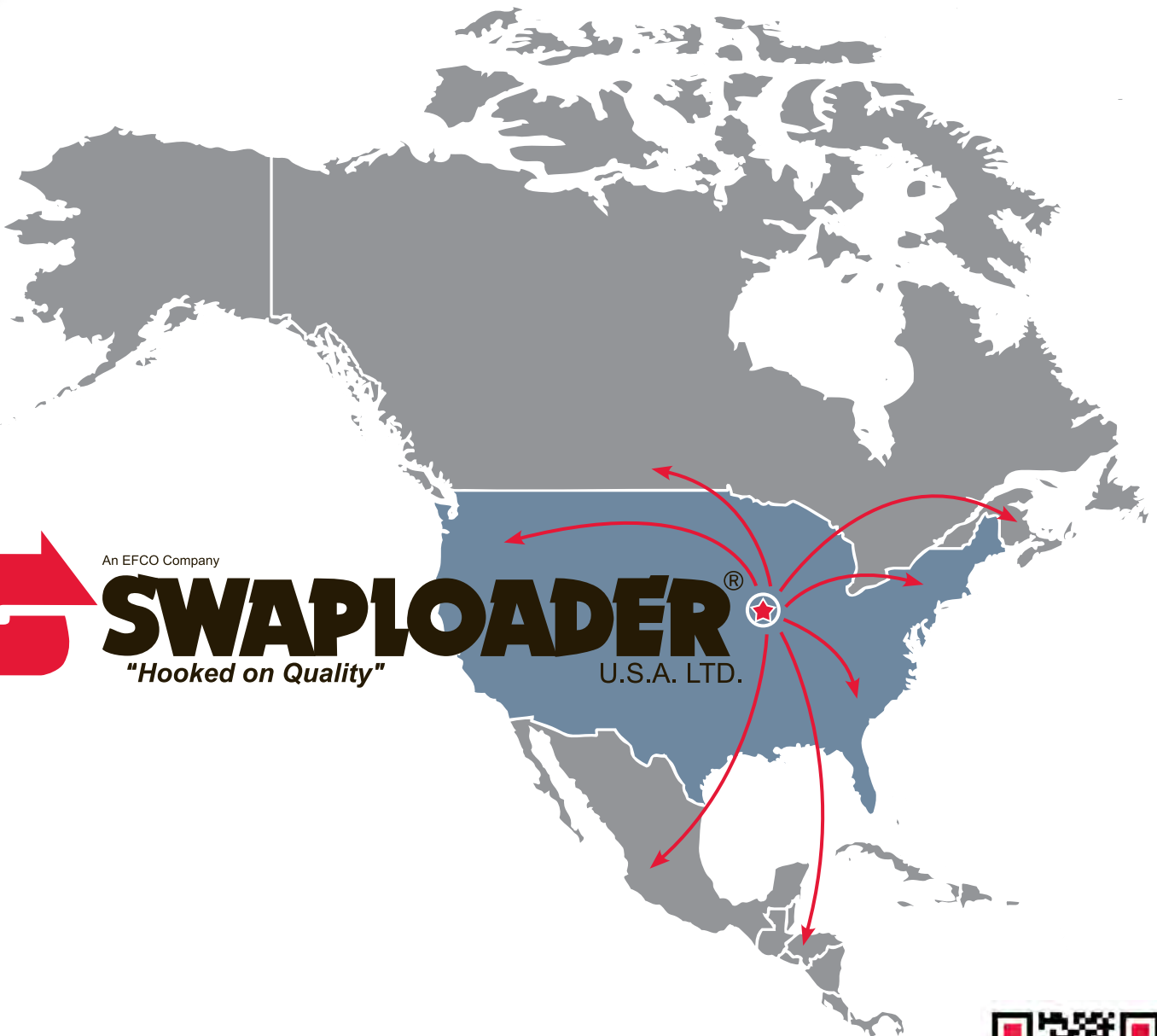
TANK CIRCUIT (EHV)

91H35 – HOSE CIRCUIT (EHV)					SL-75	
ITEM	PART #	QTY	DESCRIPTION	WT-lb/ea.	WT-lb/all	
1	10P44	2	Adp Hyd 08MJ/08FJ 90	0.30	0.60	
2	10P63	3	HHCS 5/16 x 1-3/4	0.03	0.09	
3	10P64	3	Cover Plate. Clamp 1/2	0.10	0.30	
4	10P65	3	Clamp Assy, Twin, 7/8"	0.04	0.12	
5	13P36	1	Hose Assy 83.5 08-08FJ/08FJ45	3.06	3.06	
6	13P37	1	Hose Assy 86 08-08FJ/08FJ45	3.07	3.07	
7	13P61	1	Proximity Switch	1.50	1.50	
8	13P62	2	Hose Assy 45 08-08FJ/08FJ	1.65	1.30	



HOSE CIRCUIT (EHV)

This Page Intentionally Left Blank



An EFCO Company

SWAPLOADER[®]
"Hooked on Quality"
U.S.A. LTD.



1800 Broadway Avenue, Des Moines, IA 50313-2644

515-266-3042 888-767-8000 www.swaploader.com

© 2026 SwapLoader U.S.A. Ltd. All rights reserved. SWL-101 SL-75 PARTS-INSTALL MANUAL 04.27.26