



# PARTS & INSTALLATION MANUAL

# SL-105



---

**HOIST SERIAL NUMBER**



## **TABLE OF CONTENTS**

<b>I. <u>INTRODUCTION</u></b>	
Letter to Customer .....	1-1
<b>II. <u>INSTALLATION</u></b>	
Initial Inspection .....	2-1
General Installation Procedure .....	2-1
Hoist Installation to Truck Chassis .....	2-2
Controls Installation-Manual .....	2-4
Cable Control Installation w/ U-Lock (Option) .....	2-6
EHV Installation (Option) .....	2-7
EHV Installation w/ U-Lock (Option) .....	2-9
Pump Installation .....	2-11
Hydraulic Tank Installation .....	2-11
Start Up Procedure .....	2-12
<b>III. <u>PARTS</u></b>	
Base Hoist Assembly .....	3-1
Main Frame Sub-Assembly .....	3-2
Pivot Joint Sub-Assembly .....	3-3
Outer Tube Sub-Assembly .....	3-4
Safety Latch Sub-Assembly .....	3-5
Fixed Jib Sub-Assembly .....	3-6
Hoist Installation Kit .....	3-7
Base Cylinder Circuit .....	3-8
Tank Circuit .....	3-9
Pump Circuit .....	3-10
Manual Controls, 2-Section .....	3-11
Decal Assembly .....	3-11
<b>IV. <u>OPTIONS</u></b>	
Cylinder Circuit, BL 105 STD .....	4-1
Cylinder Circuit, BL 105 EHV .....	4-2
U-Lock Assembly .....	4-3
Manual Controls, 3-Section .....	4-4
Hoist Install Kit, EHV-105 .....	4-5
Tank Circuit (EHV) .....	4-6
Tank Circuit, 3-Section 105 .....	4-7
Pump Circuit (EHV) .....	4-8
Pump Circuit, F550 .....	4-9
Hose Circuit (EHV) .....	4-10
Hose Circuit, 3-Section (EHV) .....	4-11



***This Page Intentionally Left Blank***

**TO THE CUSTOMER:**

**THIS MANUAL CONTAINS INSTALLATION INSTRUCTIONS TO THE TRUCK CHASSIS. ALL INSTRUCTIONS ARE RECOMMENDED PROCEDURES ONLY. THIS MANUAL ALSO PROVIDES BREAKDOWNS OF EACH SUB-ASSEMBLY APART OF THE HOIST THAT LISTS PART NUMBERS AND DESCRIPTIONS SHOULD ANYTHING NEED TO BE REPLACED ON THE HOIST. EACH SECTION IS CLEARLY IDENTIFIED SO YOU CAN EASILY FIND THE INFORMATION THAT YOU NEED. READ THE TABLE OF CONTENTS TO LEARN WHERE EACH SECTION IS LOCATED.**



Throughout this manual you will come across "**Dangers,**" "**Warnings,**" or "**Cautions**" which will be carried out in bold type and preceded by the symbol as indicated to the left. Be certain to carefully read the message that follows to avoid the possibility of personal injury or machine damage.

Record your SwapLoader Hoist serial number in the appropriate space provided on the title page. Your SwapLoader dealer needs this information to give prompt, efficient service when ordering parts. It pays to rely on an authorized SwapLoader Distributor for your service needs. For the location of the Distributor nearest you, contact SwapLoader.

Also, included with your hoist, is a Technical Guide. This guide provides safety suggestions, technical information, operation instructions, maintenance requirements, troubleshooting, and accessory installation instructions. Please refer to the Technical Guide for any questions you may have pertained to the above.

**NOTE:** It is SwapLoader's policy to constantly strive to improve SwapLoader products. The information, specifications, and illustrations in this publication are based on the information in effect at the time of approval for printing and publishing. SwapLoader therefore reserves the right to make changes in design and improvements whenever it is believed the efficiency of the unit will be improved without incurring any obligations to incorporate such improvements in any unit which has been shipped or is in service. It is recommended that users contact an authorized SwapLoader Distributor for the latest revisions.

***This Page Intentionally Left Blank***

# INSTALLATION

***This Page Intentionally Left Blank***



## **INITIAL INSPECTION**



When the hoist is installed and ready for delivery, it is your responsibility to fill out and submit the Product Registration Form. Visit [Truck-Mounted Product Registration - Swaploader](#) to complete this form.

When the SwapLoader hoist is received from the factory, you should inspect the hoist for damage, which may have occurred in shipment. If damage has occurred, you should contact the shipper immediately. Be sure to note any damage or missing items on bill of Lading.

When you receive your SwapLoader hoist, it is your responsibility to make sure you have received all the parts and pieces that were ordered, within 30 days of the invoice date of the hoist. Lay out all the options, loose parts and accessories on a table and compare the items received vs the Packing List and the Loose Parts Box List(s) shipped with the hoist order.

If you have any problems, shortages, or questions, please contact SwapLoader U.S.A., Ltd. immediately.

## **GENERAL INSTALLATION PROCEDURE**

The installation of the SwapLoader on a truck chassis will generally follow these steps:

1. Install hoist assembly onto truck chassis.
2. Mount the hydraulic control valve or EHV system to the hoist and install the hydraulic plumbing from the control valve to the hydraulic cylinders. Then install the control levers in the cab and route the control cables to the hydraulic control valve assembly.
3. Install the hydraulic tank, hydraulic filter, and hydraulic plumbing between the hydraulic tank and the control valve assembly.
4. Select and install the P.T.O. on the truck transmission. (Note: This can be done prior to hoist installation on the truck chassis.)
5. Install the hydraulic pump and the plumbing from the pump to the hydraulic tank and control valve assembly.
6. Fill the hydraulic tank with oil, bleed the air from the pump suction line, and start up the unit.

Although SwapLoader attempts to include the mounts and attaching fasteners with each hoist unit, your installation may require some additional mounts or modifications. If you have problems with your installation, please contact SwapLoader at 1-888-767-8000, as we may be aware of another customer who has installed a SwapLoader on a similar truck chassis.

## HOIST INSTALLATION TO TRUCK CHASSIS

1. Place the SL-105 hoist assembly on the truck chassis. The truck chassis mounting surface should be flat without any steps or protrusions. If necessary, shim bars need to be added to ensure a flat surface on which to support hoist. It is advised to clamp the main frame of the hoist to the truck chassis prior to installing the mount brackets.

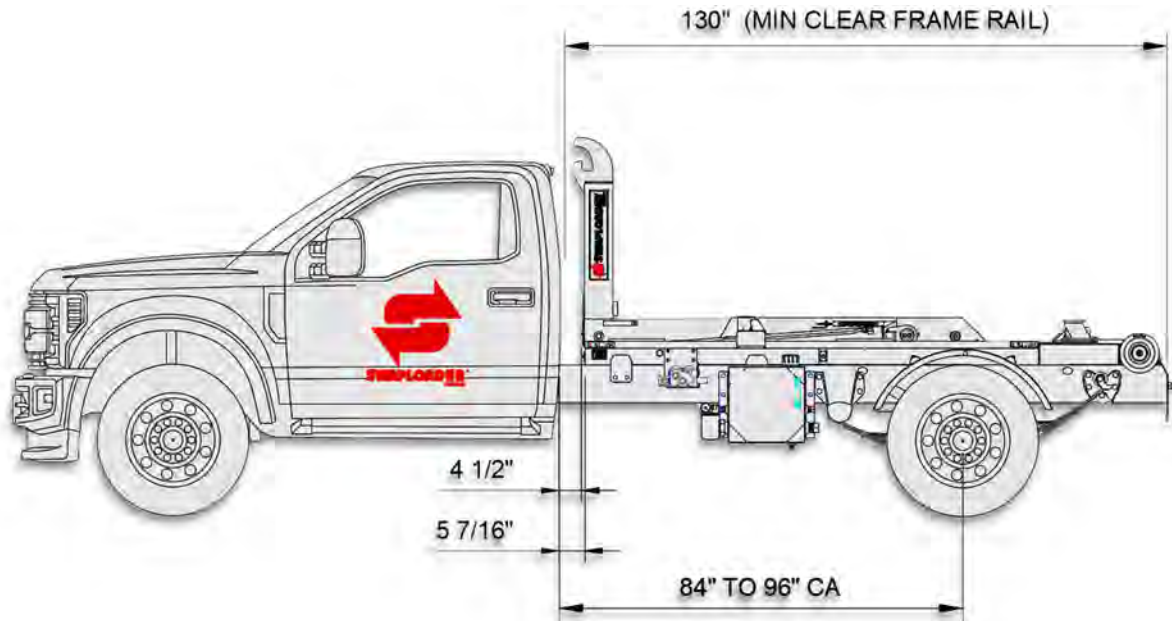


Figure A

The clear frame dimension indicated in *Fig. A* allows for the overall length of the hoist plus 5 inches for cab clearance and rear light bar mounting. Extra frame length may be needed to allow for mounting additional accessories (e.g., Cab Guard, Tarper, Light Kit, Stabilizer, etc.). For example, when mounting a light kit on a truck with a long CA, check that the hoist and the light kit are positioned far enough back to eliminate any interference between the fender and the light kit. You should also consider the final weight distribution regarding the bridge codes and axle GVWR when positioning the hoist.

### NOTE:

THE ABOVE SPECIFICATIONS ARE A MINIMUM REQUIREMENT. IT IS THE RESPONSIBILITY OF THE OWNER/ OPERATOR TO ENSURE THE COMPLETED CHASSIS MEETS OR EXCEEDS ALL FEDERAL, STATE, AND LOCAL REGULATIONS. ALSO, THE HOIST SHOULD NOT BE USED TO LIFT AND HAUL ANY LOAD THAT EXCEEDS THE LOAD RATING OF ANY OF THE INDIVIDUAL COMPONENTS OF THE COMPLETED CHASSIS (TIRES, AXLES, SUSPENSION, ETC.)

2. There are two types of mount brackets used on the Model SL-105 hoist as indicated in *Fig. B*. They are the front brackets (*Pt. No. 22H38*) and the rear brackets (*Pt. No. 22H39*). Locate the mount brackets on the side of the hoist as indicated in *Fig. B*. These dimensions

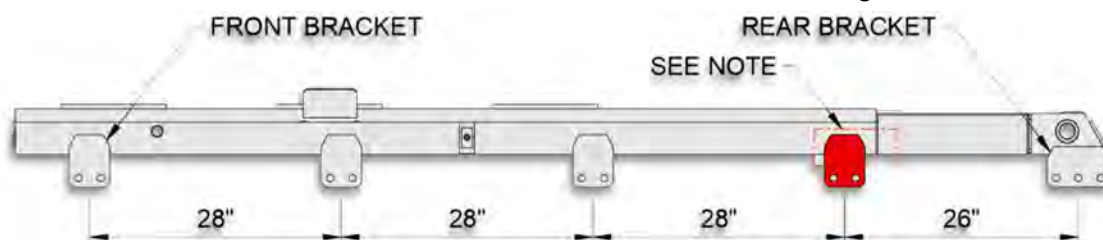


Figure B

are flexible because of possible interference with chassis components. **Note: Be sure to secure a bracket in the location indicated in Fig. B.** You should consult the truck chassis supplier for any limitations regarding drilling mount holes in the truck chassis frame rails. Typically, the holes must be at least  $2\frac{3}{4}$ " from the top of the truck chassis rails (reference Fig. C & Fig. D). Once the locations of the mount brackets have been determined, use the mount brackets as a template for marking the mounting holes in the truck chassis frame rails. Drill the  $\frac{17}{32}$ " diameter holes required and attach the brackets to the truck chassis with the  $\frac{1}{2}$ " diameter bolts, washers, and locking hex nuts provided.

**Torque to 110 ft.lb.**

3. Weld the mount brackets to the hoist main frame as indicated on Fig. C and Fig. D. You may need to modify the mount brackets or add shim plates to allow for variances in the width of the truck chassis as well as to allow for top rivets, stepped channels, etc.

**NOTE:**

PRIOR TO ANY WELDING, CONSULT THE TRUCK MANUFACTURER FOR ANY SPECIAL PRECAUTIONS THAT MAY NEED TO BE TAKEN. TYPICALLY, THE BATTERIES MUST BE DISCONNECTED AND THE GROUND LEAD FROM THE WELDER SHOULD BE CONNECTED AS CLOSE AS POSSIBLE TO THE PART BEING WELDED TO AVOID THE POSSIBILITY OF ARCHING ACROSS BEARINGS, GEARS, ETC. THE HOIST MAIN FRAME IS MADE FROM HIGH STRENGTH LOW ALLOY STEEL. USE AN APPROPRIATE WELDING PROCESS.

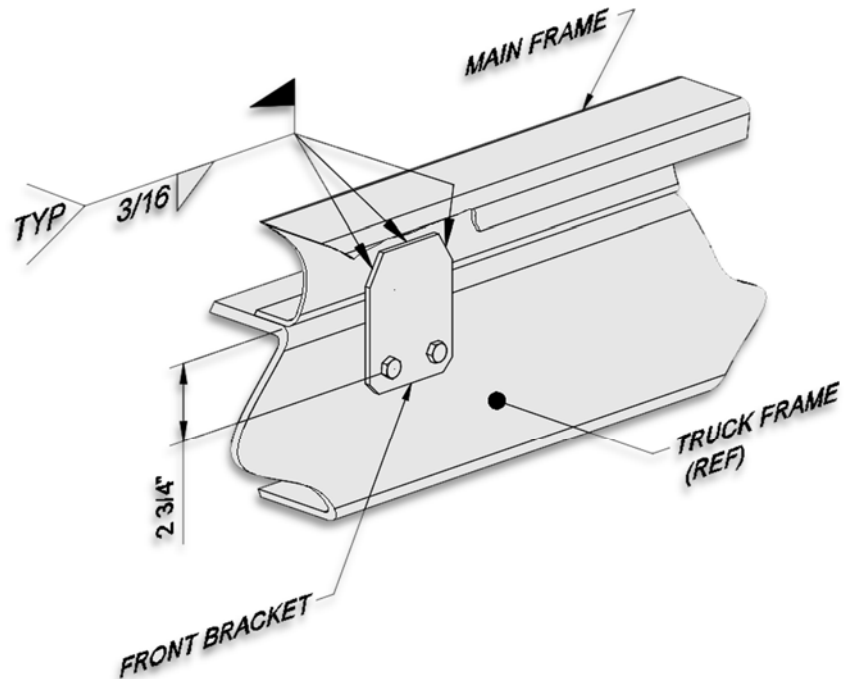


Figure C

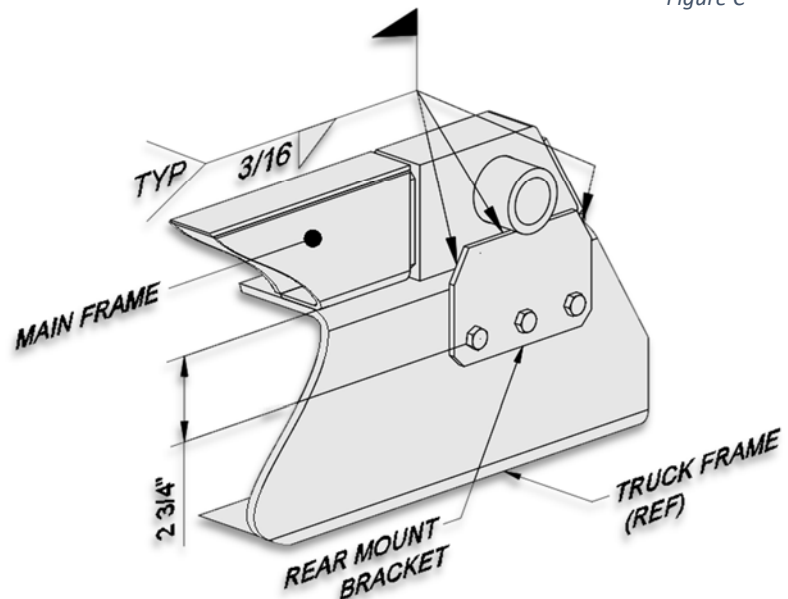


Figure D

## **CONTROLS INSTALLATION – MANUAL**

1. Attach the valve mount bracket (*Pt. No. 10H51*) to the Main Frame as indicated on *Pg. 3-11* with the fasteners provided (see *Pg. 3-7*).
2. Mount the hydraulic control valve assembly (*Pt. No. 21P32*) to the valve mount bracket as shown on *Pg. 3-11* with the fasteners provided.
3. Install the hydraulic adapters, connect the hydraulic tubing (*Pt. Nos. 11P09, 11P10, & 13P79*) to the control valve assembly as indicated on *Pg. 3-9*. The tubing should be supported by the clamp assemblies that are provided in the Loose Parts Box (see *Pg. 3-7*).
4. Determine the best location in the cab for the control levers (*Pt. No. 20P08*). The location should be such that the controls can be easily reached while operating the truck. A control lever console (*Pt. No. 20P09*) is provided to facilitate the mounting of the control levers.
5. Assemble and install the control lever console (see *Fig. E*). Typically, the console is fastened to the floor of the cab and the control cables are routed through additional holes drilled in the floor. Your installation may require that additional brackets be fabricated, or other modifications made.
6. Attach the control cables to the control levers and route the cable through the holes in the cab. Install the control levers in the console. Levers should be installed such that when the levers are pushed forward the control cable is extended. See *Pg. 3-11* (Manual Control Assembly) for control lever orientation.
7. Route the cables to the control valve location and attach them to the control valve with the bonnet connection kits provided (*Pt. No. 20P10*). See the following instruction sheet for installation procedures. The control cables supplied are 84 inches long. Your mounting may require different length control cables, which can be purchased locally or through SwapLoader. Take proper care when routing the control cables, as a good cable path is essential for a proper operating system. Keep bends in the cable path to a minimum and be as generous as possible. Under no circumstances should any bend be tighter than an 8"

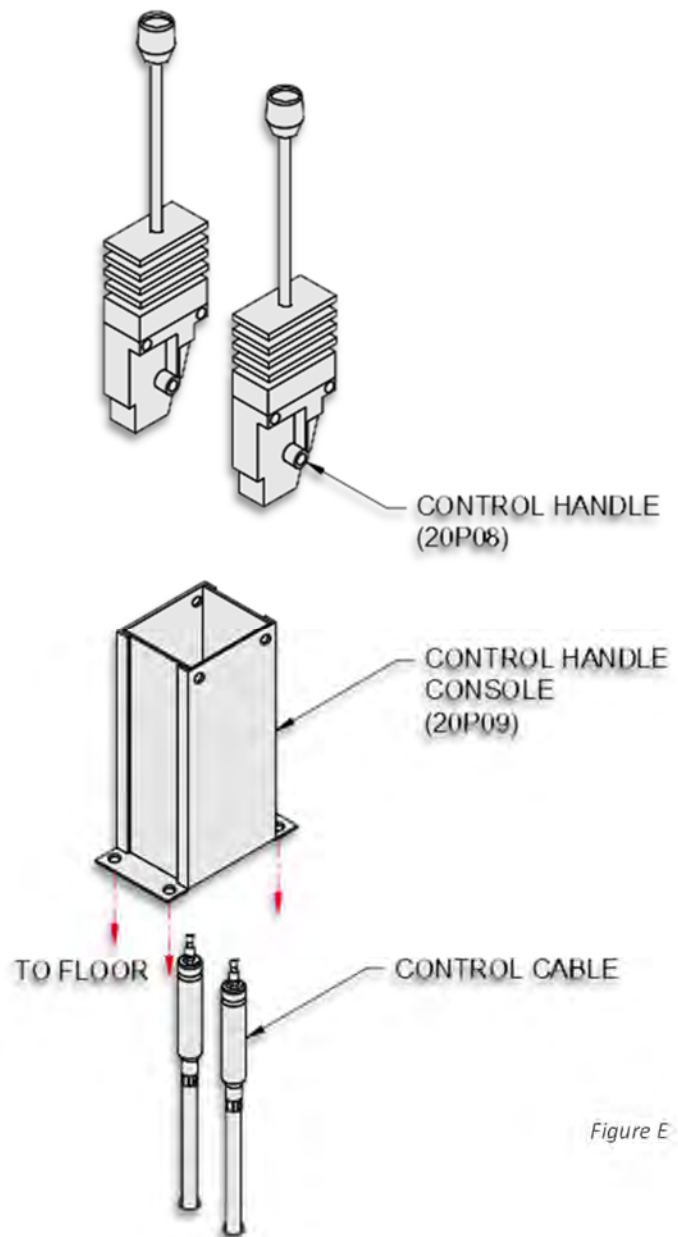


Figure E

radius. Protect the cable from heat above 225 degrees F. and avoid hot areas such as exhaust pipes, etc. Protect the cable from physical damages such as pinching or crushing, and do not use cable supports, which may crush or deform the cable. Allow room for flexing where the cable is attached to moving parts of the equipment, so that the cable is neither kinked nor stretched.

### **INSTALLATION PROCEDURE FOR A HYDRAULIC CONTROL CABLE TO HYDRAULIC VALVE WITH BONNET CONNECTION KIT**

1. Turn .750-16 UNF jam nut entire length of threaded hub back over the cable. Place Flange onto Sleeve (large end first) and flange onto sleeve and turn flange adaptor / flange / sleeve assembly entire length of threaded hub back over the cable.
2. Turn .250-28 UNF jam nut onto cable threaded rod until it bottoms.
3. Place clevis of threaded rod and bottom against jam nut. Turn other .250-28 UNF jam nut onto threaded rod until it bottoms against clevis. Align clevis so it will mate with spool terminal eye and secure jam nut against clevis.
4. Slide the clevis onto terminal eye on spool and align the holes. Insert clevis pin through yoke and terminal eye holes and secure clevis pin with retaining ring.
5. Now, with the cable attached to the valve and control head, turn the flange adaptor / flange / sleeve assembly back onto the threaded hub until it is flush with the valve face. When turning on the flange adaptor / flange / sleeve assembly, make sure that the control head remains in the neutral position.
6. Tighten the .750-16 UNF jam nut against the sleeve and lock in position.
7. Bring flange into position on bolt assembly to valve housing.

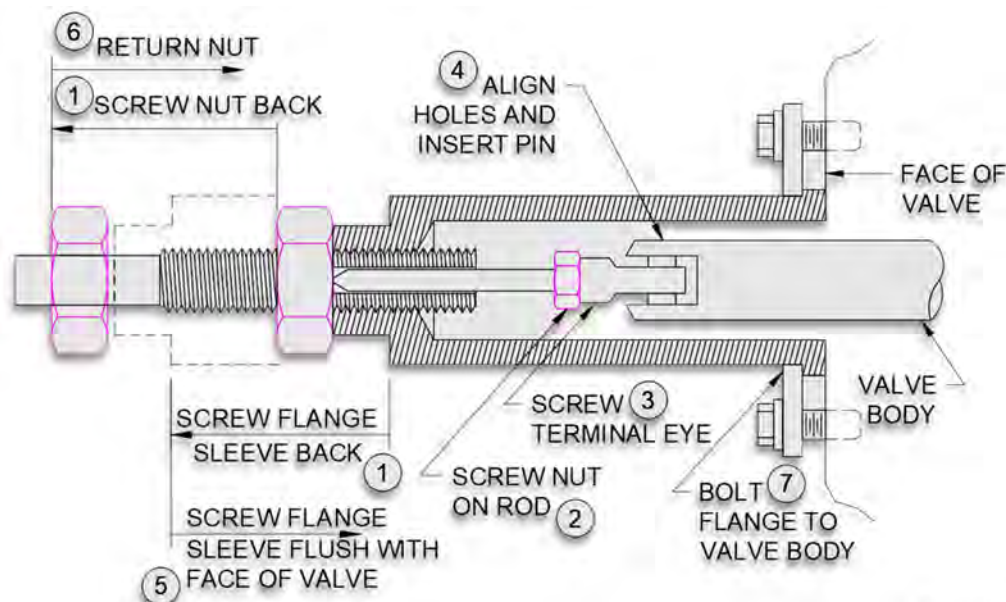


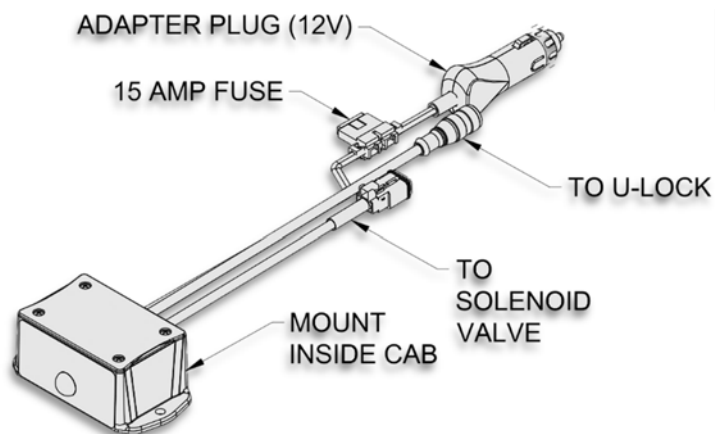
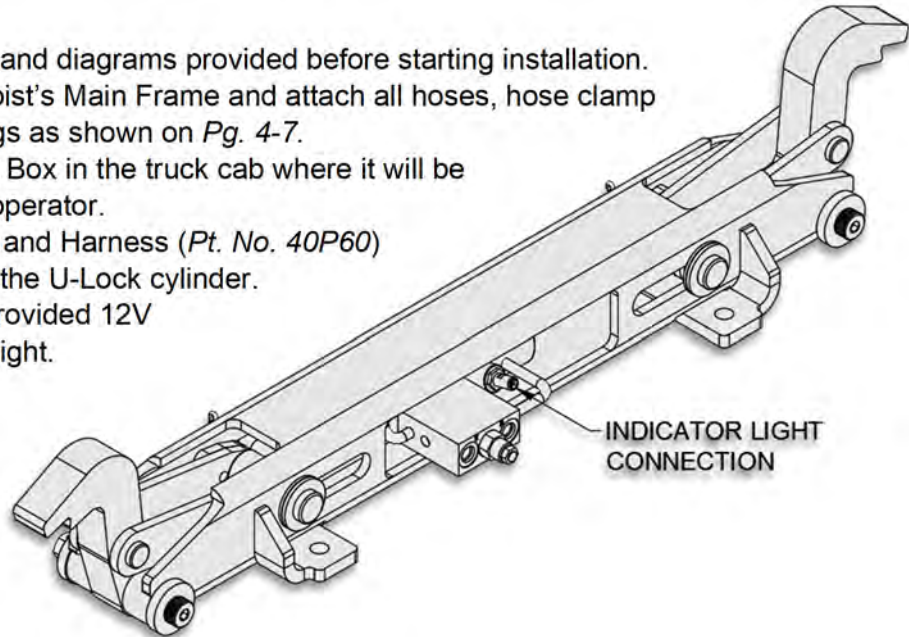
Figure F



### **CABLE CONTROL INSTALLATION w/ U-LOCK (OPTION)**

The Universal Body Lock (U-Lock) can be installed with a standard 3-section valve and operated from the cab (see *Pg. 4-4* for routing). A separate indicator light and harness will be provided to be installed in the truck cab. This will notify the operator when the U-Lock has been engaged or disengaged.

1. Review all directions and diagrams provided before starting installation.
2. Mount valve to the hoist's Main Frame and attach all hoses, hose clamp assemblies and fittings as shown on *Pg. 4-7*.
3. Mount Indicator Light Box in the truck cab where it will be clearly visible to the operator.
4. Route Indicator Light and Harness (*Pt. No. 40P60*) from the truck cab to the U-Lock cylinder.
5. Hardwire or plug in provided 12V adapter for indicator light.



#### **NOTE:**

AS A SAFETY MEASURE, THE JIB CYLINDER IS DISENGAGED WHENEVER THE U-LOCK IS ENGAGED.

**EHV INSTALLATION (OPTION)**

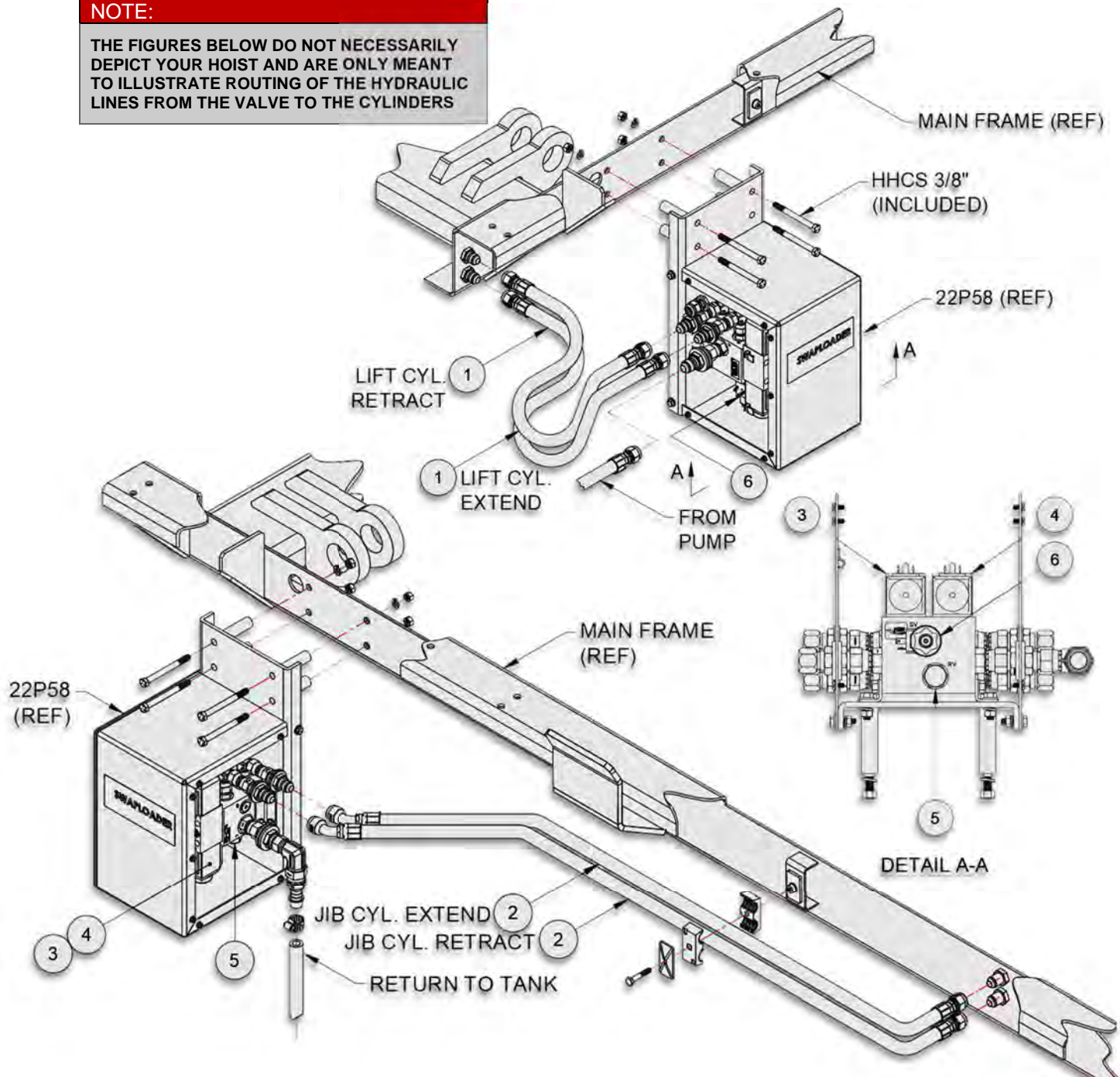
1. Review all directions and diagrams provided before starting the **Electric over Hydraulic Valve** Installation.
2. Mount the 22P58 EHV to the hoist's Main Frame and attach all hoses, hose clamp assemblies and fittings as shown on *Pg. 4-10* (also see Illustrations).

**Electric Over Hyd. Valve - SERVICE PARTS SL-105**

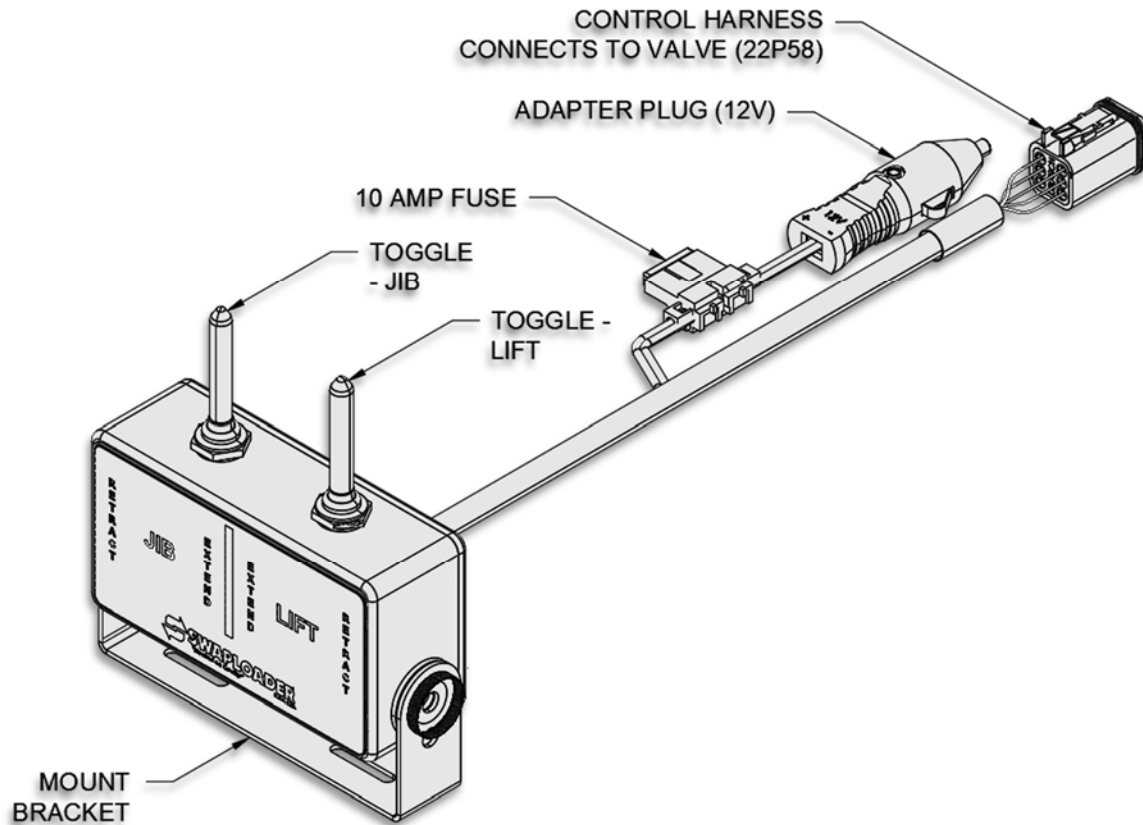
ITEM	PART #	QTY	DESCRIPTION
1	13P24	2	Hose Assy 39 08-08FJ/08FJ90
2	13P76	2	Hose Assy 52 08-08FJ/08FJ45
3	22P82	1	Solenoid Operated Valve, Coil
4	22P83	1	Solenoid Operated Valve, Spool
5	22P84	1	Relief Valve Cartridge (3250)
6	22P85	1	Dump Valve

**NOTE:**

THE FIGURES BELOW DO NOT NECESSARILY DEPICT YOUR HOIST AND ARE ONLY MEANT TO ILLUSTRATE ROUTING OF THE HYDRAULIC LINES FROM THE VALVE TO THE CYLINDERS



3. Route control harness from valve into the truck cab. Determine the best location in the cab for the control box location and install with mounting screws (included). The location should be such that the controls can be easily reached while operating the truck.



4. Hardwire or plug in provided 12V adapter for control box.



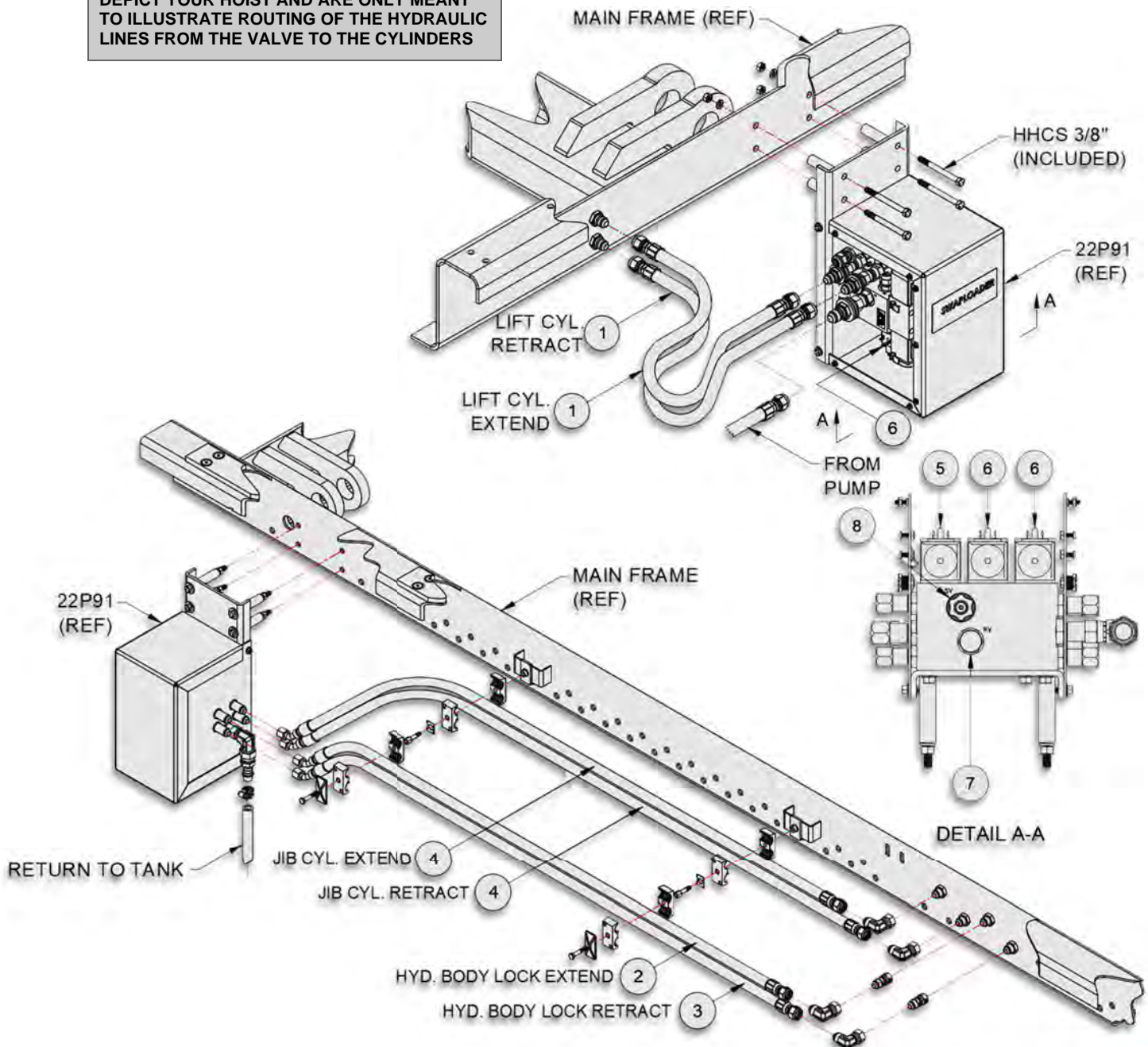
**EHV INSTALLATION w/ U-LOCK (OPTION)**

1. Review all directions and diagrams provided before starting the **Electric over Hydraulic Valve** Installation.
2. Mount the 22P91 EHV to the hoist's Main Frame and attach all hoses, hose clamp assemblies and fittings as shown on *Pg. 4-11* (also see Illustrations).

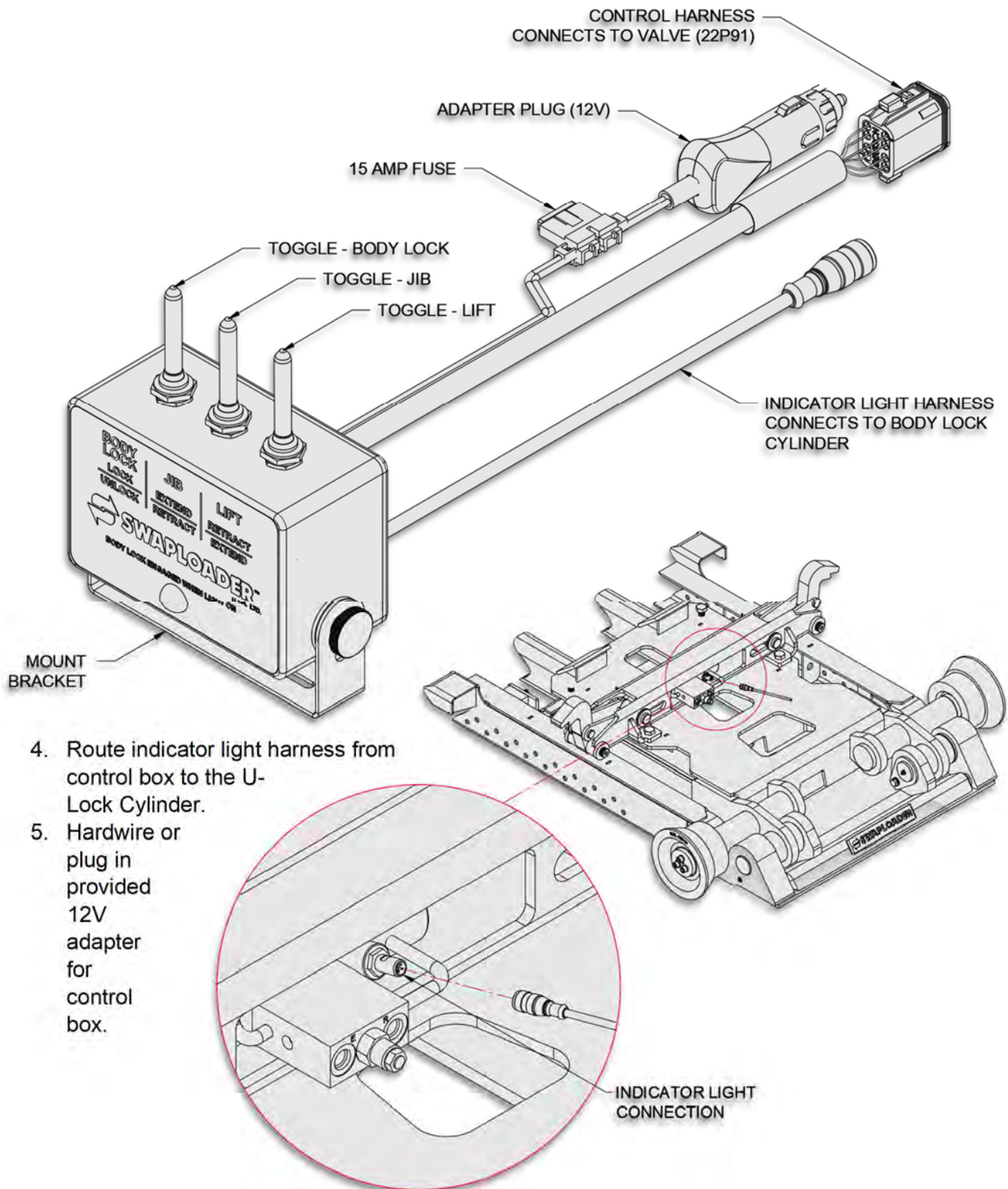
**NOTE:**

THE FIGURES BELOW DO NOT NECESSARILY DEPICT YOUR HOIST AND ARE ONLY MEANT TO ILLUSTRATE ROUTING OF THE HYDRAULIC LINES FROM THE VALVE TO THE CYLINDERS

Electric Over Hyd. Valve - SERVICE PARTS				SL-105
ITEM	PART #	QTY	DESCRIPTION	
1	13P24	2	Hose Assy 39 08-08FJ/08FJ90	
2	13P28	1	Hose Assy 57 08-08FJ/08FJ45	
3	13P32	1	Hose Assy 58 08-08FJ/08FJ45	
4	13P76	2	Hose Assy 52 08-08FJ/08FJ45	
5	22P82	1	Solenoid Operated Valve, Motor	
6	22P83	2	Solenoid Operated Valve, Cylinder	
7	22P84	1	Relief Valve Cartridge, 3250	
8	22P85	1	Dump Valve	



3. Route control harness from valve into the truck cab. Determine the best location in the cab for the control box location and install with mounting screws (included). The location should be such that the controls (*Pt. No. 22P95*) can be easily reached while operating the truck.



## PUMP INSTALLATION

1. Install the hydraulic pump to the P.T.O. (Bolts are not provided).
2. Install the hydraulic fittings into ports on the hydraulic pump as shown on *Pg. 3-10*.
3. Connect the suction hose assembly to the hydraulic tank (1" I.D. hose) and route to the hydraulic pump in as short and straight line as possible. Be sure to route the hose clear of exhaust components and of the drive shaft. Extra hose is provided so the hose can be shortened to an appropriate length. Install the hose on the hose barb fittings at the tank and at the pump and secure with the hose clamps provided.

**NOTE: Prior to startup, this hose must be filled with oil.**

4. Connect pressure hose assembly (1/2" I.D. hose) to control valve inlet and route to the pump the same as the suction line. This hose is provided with only one fitting, so the hose can be shortened to appropriate length. Remove the hose and shorten as required. After the hose has been shortened, lubricate the insert threads of the fitting and the I.D. of the hose. Measure 1-3/16" from the end of the hose and mark the hose for the socket depth. Screw hose into the socket (left-hand thread) to the depth marked on the hose. Screw insert into socket until insert touches the socket. Clean the inside of the hose assembly by either blowing clean compressed air through it or by flushing it.
5. Install the completed hose assembly to the inlet port of the control valve assembly and the outlet port of the hydraulic pump. Tie up the pressure and suction hoses as necessary. Again, be sure the hoses are routed to avoid exhaust components and to stay clear of the drive shaft.

## HYDRAULIC TANK INSTALLATION

1. Select a location to mount the hydraulic tank. Reference *Fig. G* or *Pg. 3-11* for the suggested location of the hydraulic tank to the rear of the control valve assembly on the left-hand side of the truck. The hydraulic hoses have been sized for the tank to be mounted in this general area. The tank can be located on the right-hand side or behind the cab, if necessary, which means longer hoses may be required.

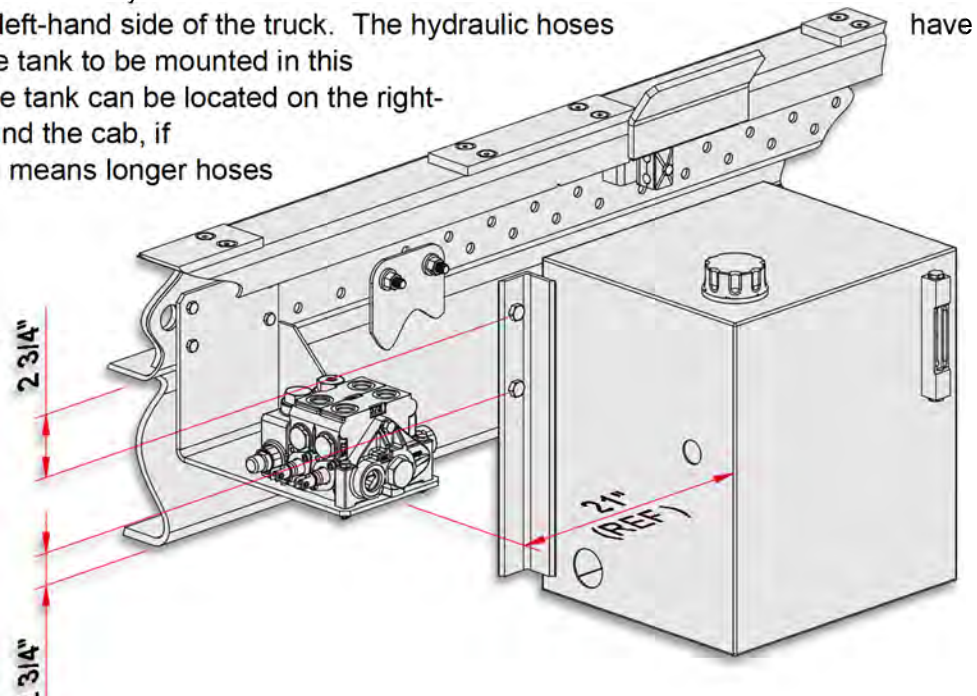


Figure G



2. Drill four (4) holes for 1/2" diameter bolts (provided) in the mount angle of the hydraulic tank (two per angle) and the frame rails of the truck chassis. Mount the hydraulic tank and install the hydraulic filter. Install the hydraulic return hose and the hose barb fitting between the filter and the control valve assembly as shown on *Pg. 3-9*. The hose length can be shortened if necessary. Secure the hose to the barb fittings with the hose clamps provided.

### **START UP PROCEDURE**

1. Fill the hydraulic tank with hydraulic oil (see oil specification in Section IV: Maintenance.)
2. Prime the pump by loosening the clamp on the suction hose at the pump. Pull the hose back off the fitting till the air is bled from the line. Push the hose back on the fitting and retighten the clamp.
3. Engage the P.T.O. and run the pump at idle (700 to 900 RPM). Operate the cylinders at full stroke five to ten times to bleed the air from the lines and cylinders. The cylinders were filled with oil during testing at the factory, but some seepage may have occurred during shipping and installation. Refill the hydraulic tank, if needed, during this sequence and do not let the pump run without oil.
4. Check for leaks and tighten fittings as necessary.
5. Verify the movement of the control levers corresponds to the movement of the cylinders per the figure below.
6. Install all safety decals and product decals as shown on *Pg. 3-12* after final installation and painting have been completed.
7. Fill out the Product Registration form online at [Truck-Mounted Product Registration - Swaploader](http://Truck-Mounted Product Registration - Swaploader).



#### **NOTE:**

FAILURE TO FILL OUT AND SUBMIT PRODUCT REGISTRATION WITHIN 15 DAYS OF INSTALLATION MAY POSSIBLY VOID THE WARRANTY.



- CAUTION** The SwapLoader hoist must be used with bodies or containers that properly fit the front hook and the rear hold-downs (see Subframe Critical Dimensions in the Technical Guide). If possible, pick up one of the containers that will be used with the SwapLoader hoist and verify the following:
- Outside dimensions of the long sills match the guiding rollers on the hoist.
  - The front hook dimensions are correct for the hoist.
  - The rear hold-downs of the container latch into the hold-downs on the hoist.
  - Check for any interference between the container and any part of the hoist (i.e.: Hydraulic tank, hydraulic tubing or hose, hydraulic valve, etc.)

# PARTS

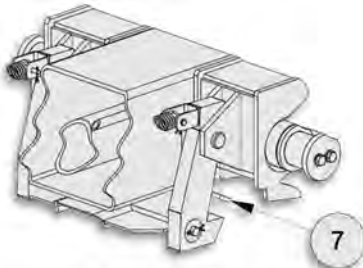
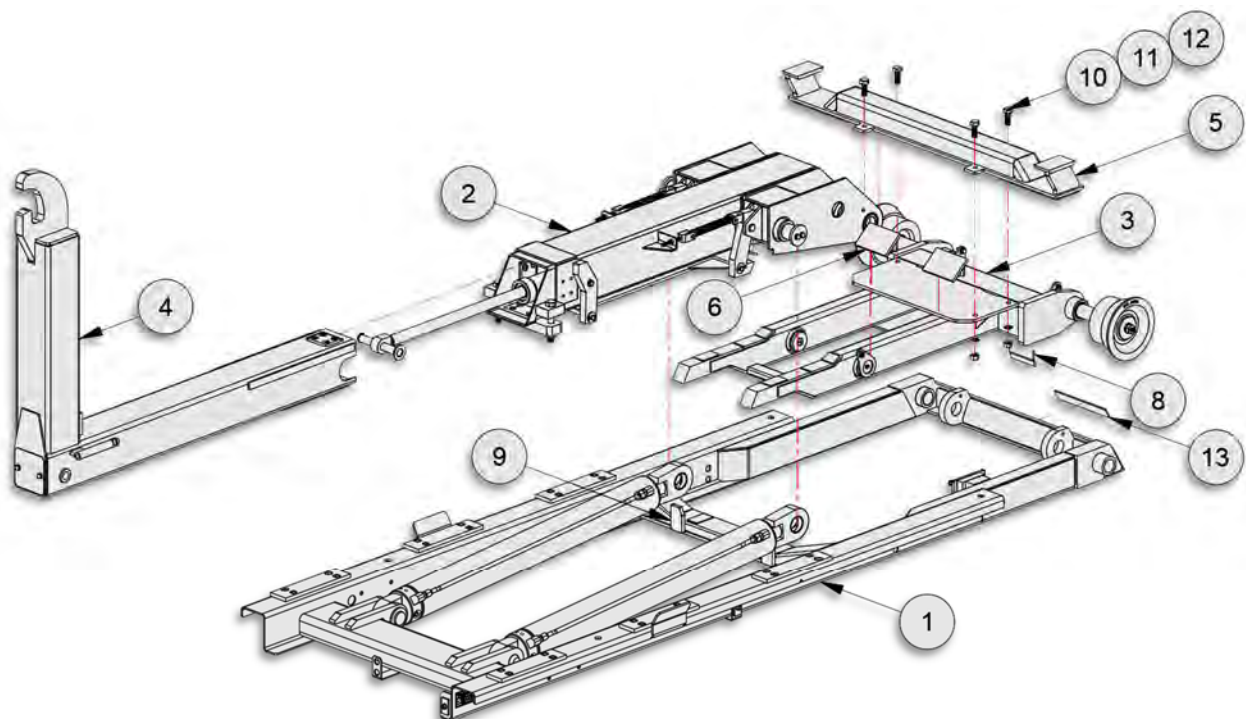
***This Page Intentionally Left Blank***

**DISC-LOCK WASHER  
TORQUE SPECS**

BOLT SIZE	SAE GR 8 ASS'Y TORQUE (FT-LBS)
3/8	50
7/16	80
1/2	120
5/8	230
3/4	380
7/8	400
1	400

**12H55 - BASE HOIST SUB-ASSEMBLY****SL-105**

ITEM	PART #	QTY	DESCRIPTION	WT- lb/ea.	WT-lb/all
1	12H53	1	Main Frame Sub-Assembly	706.38	706.38
2	12H54	1	Outer Tube Sub-Assembly	552.45	552.45
3	12H61	1	Pivot Joint Sub-Assembly	382.06	382.06
4	12H97	1	Fixed Jib Sub-Assembly	194.10	194.10
5	12H98	1	Body Lock Weldment	77.28	77.28
6	12H99	2	Tube Stop Sub-Weldment, 49 Deg	3.14	6.28
7	20H93	2	Latch Stop	0.10	0.20
8	23H56	1	Lockout Ramp, 4-1/4	1.18	1.18
9	25H08	2	Pivot Guide, MF	0.92	1.84
10	00767	4	Washer, Split Lock 5/8	0.04	0.16
11	00P24	4	5/8-11 U.N.C Nut	0.09	0.36
12	00P91	4	HHCS 5/8-11 x 1-3/4 Gr8	0.31	1.24
13	90P90	1	Name Plate Insert	0.01	0.01

**LATCH STOP DETAIL****SL-105 BASE HOIST w/ FIXED JIB**

**DISC-LOCK WASHER  
TORQUE SPECS**

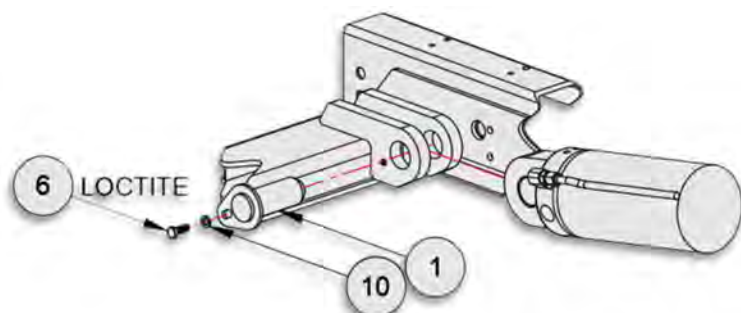
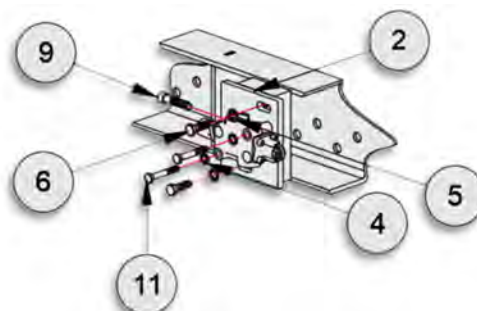
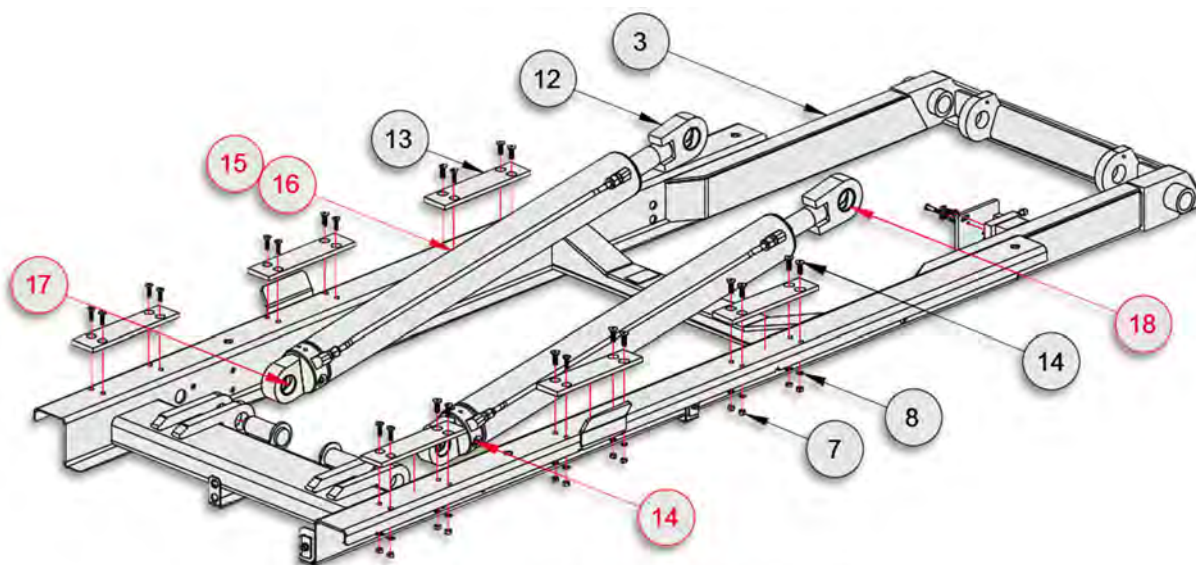
BOLT SIZE	SAE GR 8 ASS'Y TORQUE (FT-LBS)
3/8	50
7/16	80
1/2	120
5/8	230
3/4	380
7/8	400
1	400

**12H53 – MAIN FRAME SUB-ASSEMBLY****SL-105**

ITEM	PART #	QTY	DESCRIPTION	WT- lb/ea.	WT-lb/all
1	11H09	2	Pin, MF/Cyl 1-3/4 x 4-3/8	4.02	8.04
2	11H91	1	Jib Lockout Mount Weldment	2.53	2.53
3	12H49	1	Main Frame Weldment	425.26	425.26
4	00752	2	Washer, Split Lock – 5/16 Dia	0.03	0.06
5	00755	26	Washer, Lock – 3/8 Dia	0.03	0.78
6	00P13	4	HHCS 3/8-16 UNC x 1-1/4 Gr8	0.06	0.24
7	00P14	24	Nut, Hex 3/8-16 UNC Gr8	0.02	0.48
8	00P68	24	FHCS 3/8-16 UNC x 1-1/4 SS	0.11	2.64
9	01P20	1	SHCS 3/8-16 UNC x 1-3/4	0.07	0.07
10	01P28	2	Washer, Disc-Lock 3/8 Dia	0.01	0.02
11	10P63	2	HHCS 5/16 x 1-3/4	0.03	0.06
12	22P02	2	Hyd. Cylinder 4 x 2 x 38	122.90	245.80
13	90P71	6	Wear Pad, 2-3/4x1/2x11-3/4	0.63	3.78

**LIFT CYLINDER SERVICE PARTS**

14	21P11	Counterbalance Valve Cartridge		
15	22P03	Seal Kit		
16	22P04	Hydraulic Return Line		
17	22P30	Bronze Bearing		
18	22P31	Bronze Bearing		

**LIFT CYLINDER PIN DETAIL****JIB LOCKOUT VALVE MOUNT DETAIL****MAIN FRAME SUB-ASSEMBLY**



**DISC-LOCK WASHER  
TORQUE SPECS**

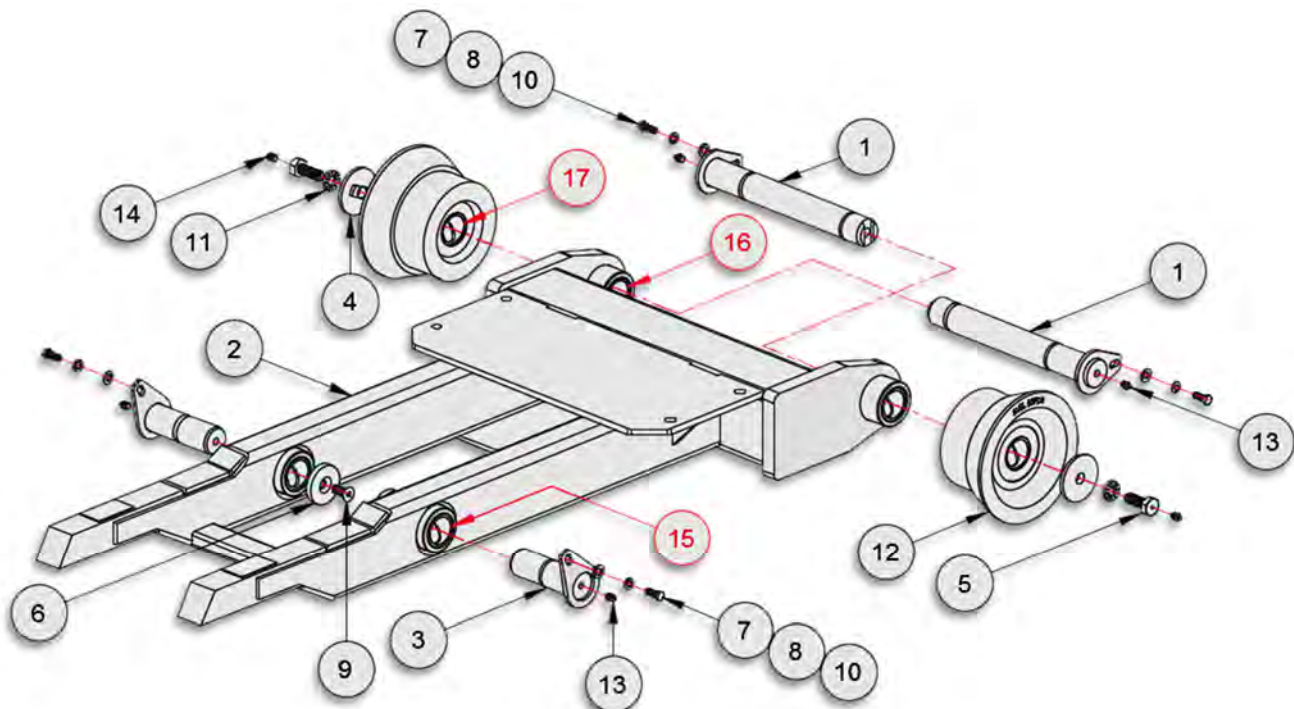
BOLT SIZE	SAE GR 8 ASS'Y TORQUE (FT-LBS)
3/8	50
7/16	80
1/2	120
5/8	230
3/4	380
7/8	400
1	400

**12H61 – PIVOT JOINT SUB-ASSEMBLY****SL-105**

ITEM	PART #	QTY	DESCRIPTION	WT- lb/ea.	WT-lb/all
1	11H10	2	Pin, PJ/MF 1-3/4 x 13-1/4	9.39	18.78
2	11H93	1	Pivot Joint Weldment	216.63	216.63
3	12H62	2	Pin, PJ/OT 1-3/4 x 5-3/16	4.41	8.82
4	22H35	2	Pin Cap, 1/2 x 3	0.53	1.06
5	22H36	2	HHCS 5/8-11 UNC x 1-3/4 GZ	0.23	0.46
6	22H37	2	Pin Cap, 3/8 x 2-1/2	0.61	1.22
7	00P36	4	Washer, Flat 3/8 HT	0.01	0.04
8	00P62	4	HHCS 3/8-16 UNC x 1 Gr8	0.04	0.16
9	00P73	2	FHCS 1/2-13 UNC x 1-1/4 Gr8	0.11	0.22
10	01P28	4	Washer, Disc Lock 3/8 Dia Pr	0.01	0.04
11	01P31	2	Washer, Disc Lock 5/8 Pr	0.03	0.06
12	80P10	2	Roller Assy, 6-1/4"x1-3/4ID	34.84	69.68
13	90P03	4	Zerk, Grease – 1/8 NPT	0.02	0.08
14	90P20	2	Zerk, Grease – 1/8-28 NPT	0.02	0.04

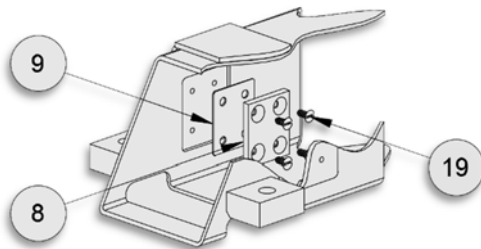
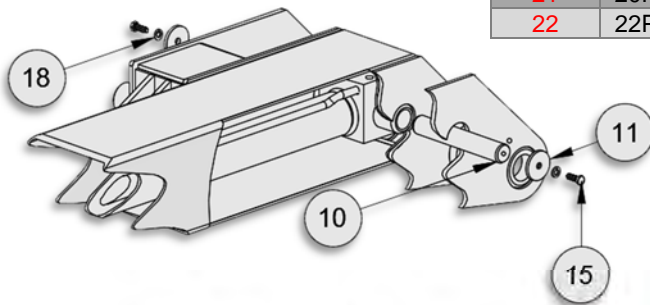
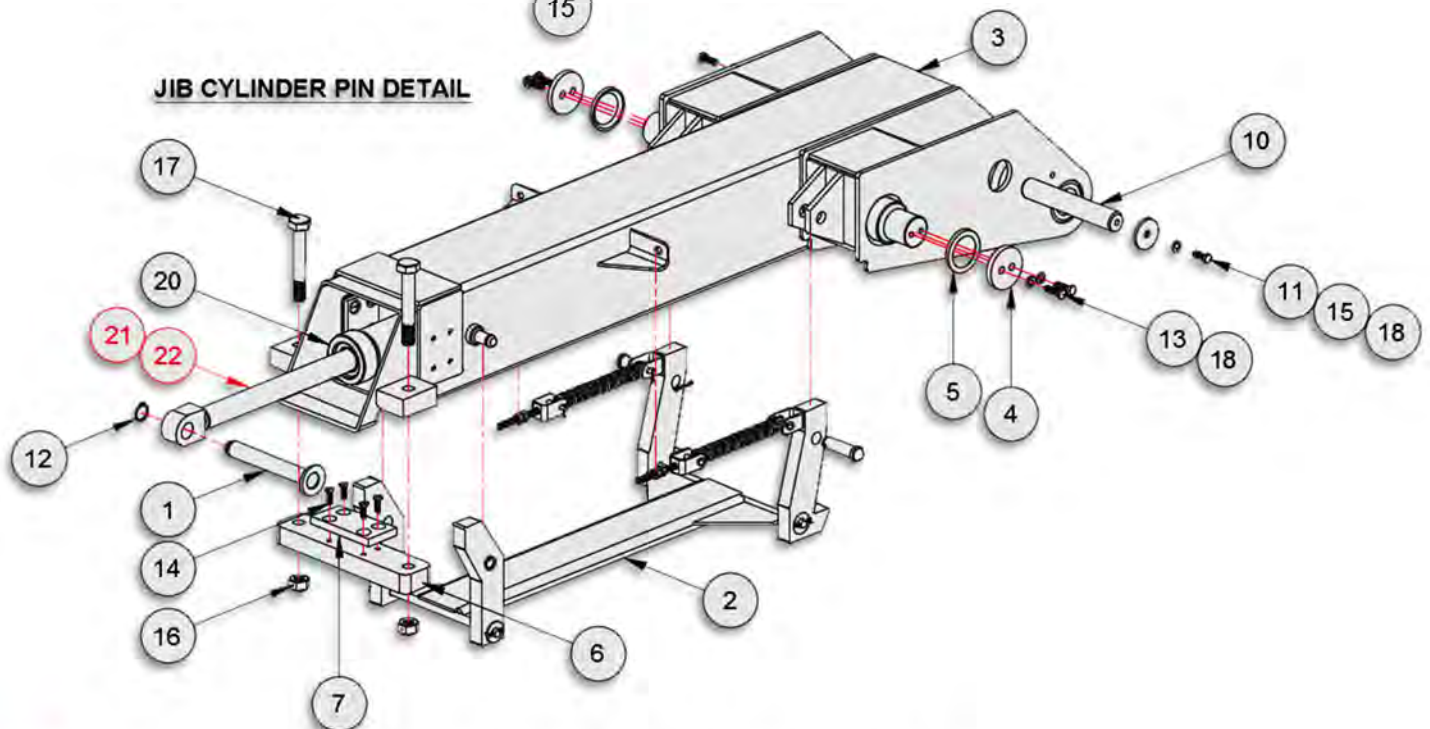
**BEARINGS**

15	23H09		Brz Brg, 2-1/8ODx1-3/4IDx3-1/4 lg		
16	23H11		Brz Brg, 2-1/8ODx1-3/4IDx4 lg		
17	50P14		Brz Brg, 2-1/8ODx1-3/4IDx3 lg		

**PIVOT JOINT SUB-ASSEMBLY**

**DISC-LOCK WASHER  
TORQUE SPECS**

BOLT SIZE	SAE GR 8 ASS'Y TORQUE (FT-LBS)
3/8	50
7/16	80
1/2	120
5/8	230
3/4	380
7/8	400
1	400

**OUTER TUBE WEAR PAD DETAIL****JIB CYLINDER PIN DETAIL****OUTER TUBE SUB-ASSEMBLY****12H54 – OUTER TUBE SUB-ASSEMBLY****SL-105**

ITEM	PART #	QTY	DESCRIPTION	WT- lb/ea.	WT-lb/all
1	10H08	1	Pin, Jib/Cyl 1 x 6-3/4	1.81	1.81
2	11H11	1	Safety Latch Sub-Assembly	46.80	46.80
3	12H46	1	Outer Tube Weldment	225.22	225.22
4	20H19	2	Pin Cap, 3/8 x 2-3/4	0.78	1.56
5	20H21	2	Spacer, 3/8 x 2-3/4OD	0.21	0.42
6	20H64	1	Pin Cap, 3/8 x 2-1/2	0.61	1.22
7	20H65	1	Wear Pad, 2-1/2x1/2x5	0.28	0.28
8	22H27	2	Wear Pad, 2-3/4x3/83-1/4	0.31	0.62
9	24H67	2	Shim, Jib 2-3/4 x 14GA x 3-1/4	0.19	0.38
10	25H11	1	Pin, OT/Cyl 1-1/4 x 7-11/16	2.69	2.69
11	60H27	2	Pin Cap, 3/16x 13/32	0.20	0.40
12	00P05	1	Snap Ring, Ext 2-1/4 Shaft	0.01	0
13	00P13	4	HHCS 3/8-16 UNC x 1-1/4 Gr8	0.06	0.24
14	00P18	4	FHCS 5/16-18 UNC x 1 Brass	0.03	0.12
15	00P62	2	HHCS 3/8-16 UNC x 1 Gr8	0.05	0.10
16	00P72	2	Nut, Lock 3/4-10 UNC Gr8	0.22	0.44
17	00P80	2	HHCS 3/4-10 UNC x 5 Gr8	0.82	1.64
18	01P28	6	Washer, Disc Lock 3/8 Pr	0.01	0.06
19	01P44	8	FSCS 5/16-18 UNC x 5/8 SS	0.43	3.44
20	21P99	1	Hyd. Cylinder 2.5 x 1.375 x 24	66.00	66.00

**JIB CYLINDER SERVICE PARTS**

21	20P28	Counterbalance Valve Cartridge		
22	22P01	Seal Kit		

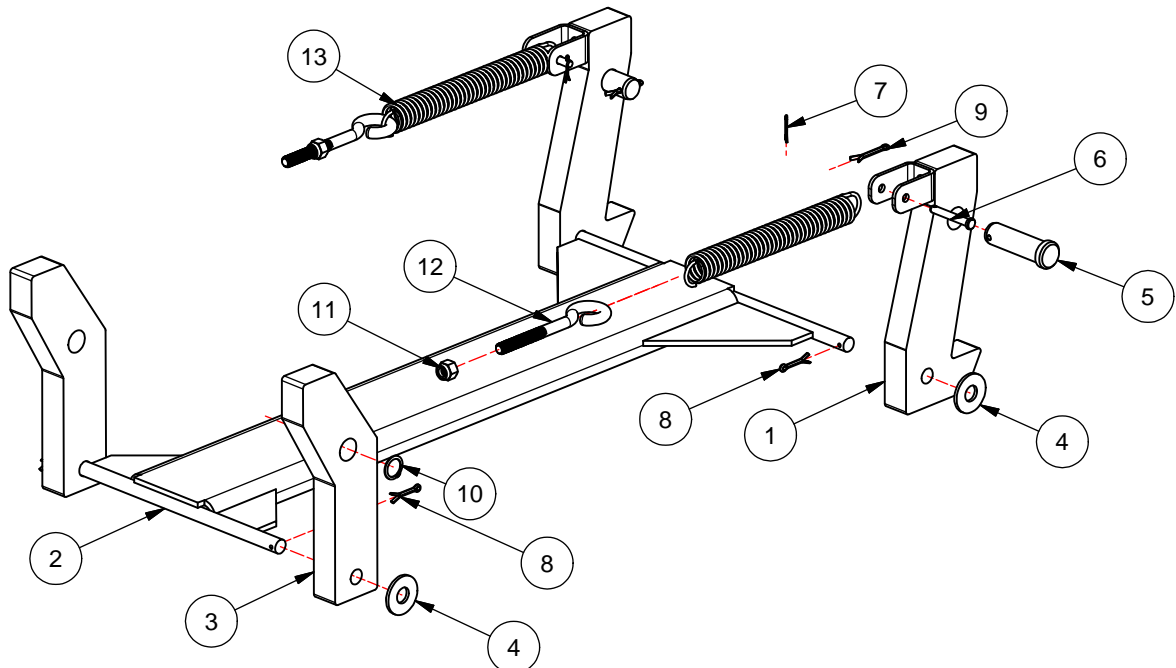
DISC-LOCK WASHER  
TORQUE SPECS

BOLT SIZE	SAE GR 8 ASSY TORQUE (FT-LBS)
3/8	53
7/16	85
1/2	130
5/8	258
3/4	459
7/8	739
1	1108

NOTE:  
APPLY LOCTITE 243 (BLUE)  
TO ALL BOLTS.

11H11 - SAFETY LATCH SUB-ASSEMBLY

ITEM	PART #	QTY	DESCRIPTION	WT-lb/ea
1	11H02	2	SAFETY LATCH HOOK, SL-105	5.55
2	11H03	1	CONNECTION BAR WDMT, SL-105	9.48
3	20H69	2	RELEASE LEVER, SAFETY LATCH	4.96
4	00772	4	WASHER, FLAT 1/2	0.04
5	00P22	2	PIN, CLEVIS 3/4 x 2-1/2	0.36
6	00P23	2	PIN, CLEVIS 1/4 x 1-3/4	0.03
7	00P25	2	PIN, COTTER 1/16 x 3/4	0.00
8	00P26	4	PIN, COTTER 1/8 x 1	0.00
9	00P27	2	PIN, COTTER 1/8 x 1-1/4	0.01
10	00P28	2	SNAP RING, EXT 0.75	0.00
11	00P43	2	NUT, NYLOCK 3/8-16 UNC GR8	0.02
12	23P13	2	EYEBOLT 3/8-16 UNC x 3	0.20
13	90P04	2	SPRING, EXT 7/8 OD x 6 LG	0.33



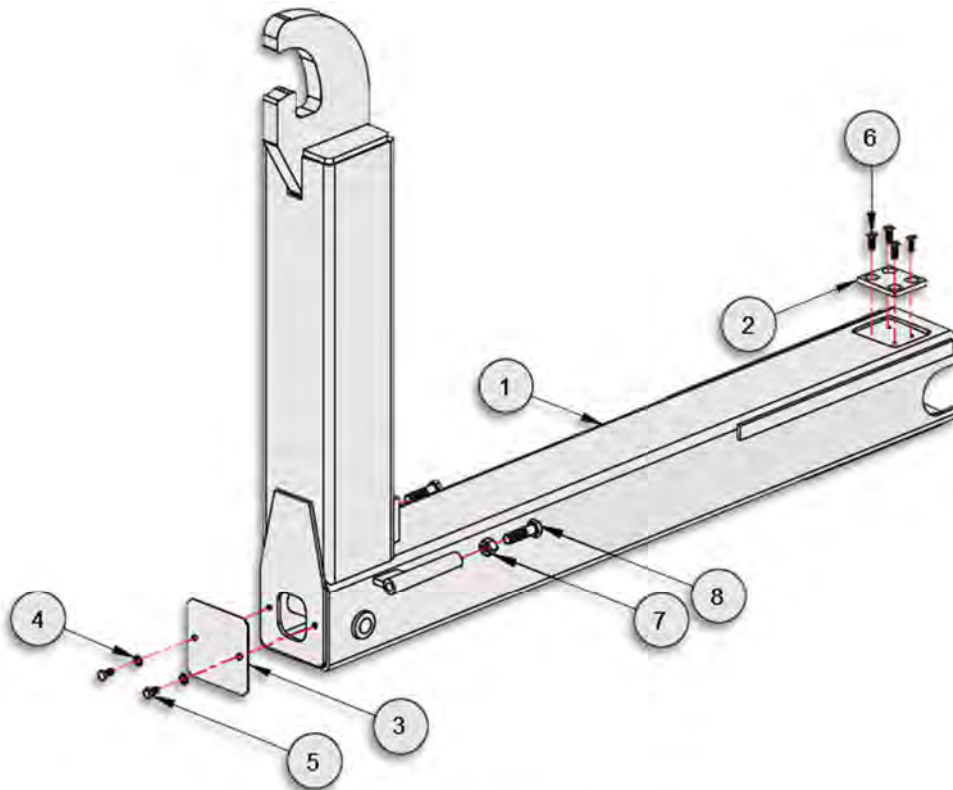
**SAFETY LATCH SUB-ASSEMBLY, SL-105**

**DISC-LOCK WASHER  
TORQUE SPECS**

<b>BOLT SIZE</b>	<b>SAE GR 8 ASS'Y TORQUE (FT-LBS)</b>
<b>3/8</b>	50
<b>7/16</b>	80
<b>1/2</b>	120
<b>5/8</b>	230
<b>3/4</b>	380
<b>7/8</b>	400
<b>1</b>	400

**12H97 – FIXED JIB SUB-ASSEMBLY****SL-105**

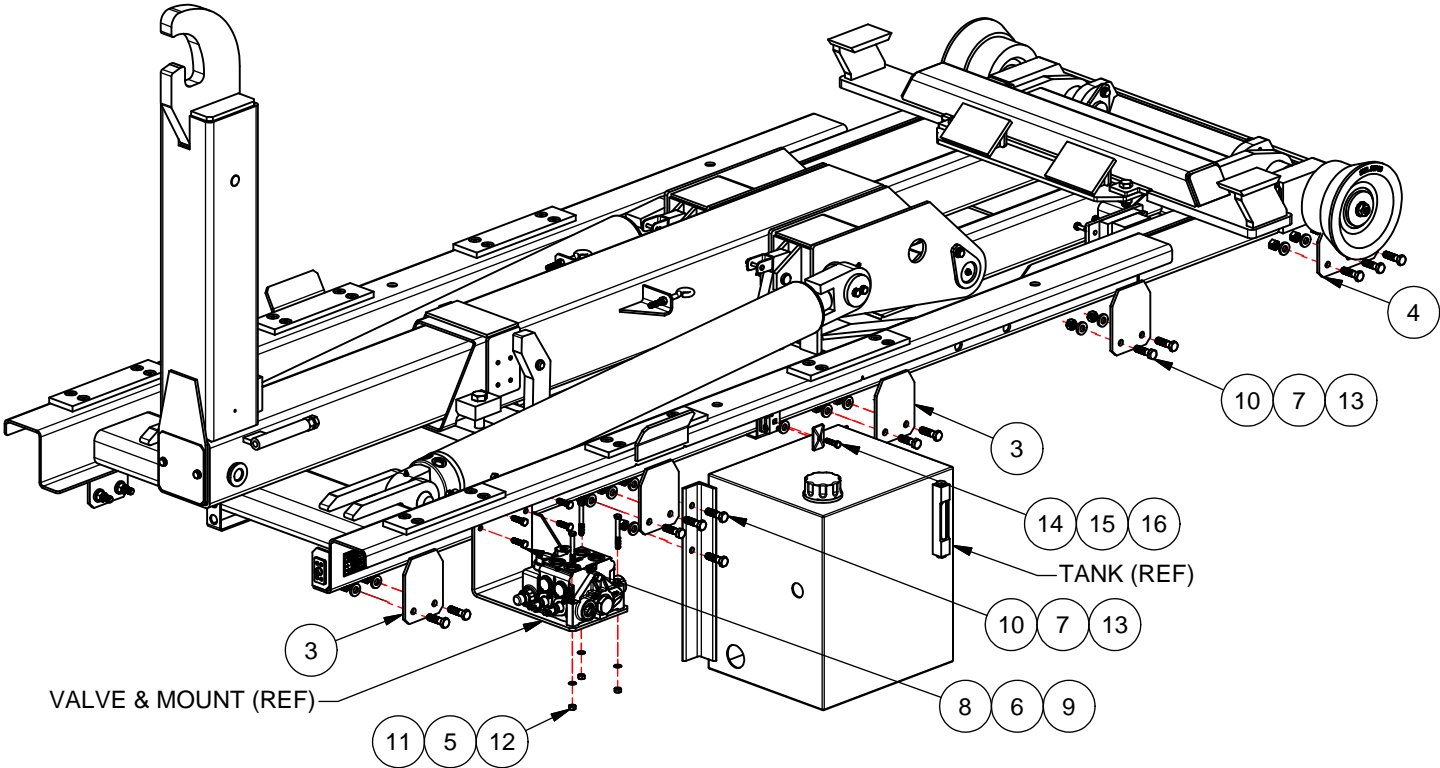
<b>ITEM</b>	<b>PART #</b>	<b>QTY</b>	<b>DESCRIPTION</b>	<b>WT- lb/ea.</b>	<b>WT-lb/all</b>
1	12H45	1	Fixed Jib Weldment, 36"	0.24	0.48
2	22H27	1	Wear Pad, 2-3/4x3/8x3-1/4	0.31	0.31
3	62H11	1	Cover, Jib 5-1/4x11GAx5-1/4	0.90	0.90
4	00755	2	Washer, Lock – 3/8 Dia	0.03	0.78
5	00P03	2	HHCS 1/2-13 UNC x 3/4	0.04	0.08
6	00P18	4	FHCS 5/16-18 UNC x 1 Brass	0.03	0.12
7	00P24	2	Nut, Hex 5/8-11 UNC Gr8	0.33	0.66
8	01P17	2	HHCS 5/8-11 UNC x 2-1/4 Gr8	0.30	0.60

**FIXED JIB SUB-ASSEMBLY**

DISC-LOCK WASHER TORQUE SPEC'S	
BOLT SIZE	SAE GR 8 ASSY TORQUE (FT-LBS)
3/8	53
7/16	85
1/2	130
5/8	258
3/4	459
7/8	739
1	1108
NOTE: APPLY LOCTITE 243 (BLUE) TO ALL BOLTS.	

12H56 - HOIST INSTALLATION KIT					
ITEM	PART #	QTY	DESCRIPTION	WT-lb/ea	
* 1	12H57	1	DECAL ASSEMBLY, SL-105	0.00	
* 2	12H58	1	PARTS & OP, SL-105	0.00	
3	22H38	8	FRONT BRACKET	1.72	
4	22H39	2	REAR BRACKET	2.10	
5	00752	3	WASHER, LOCK 5/16	0.03	
6	00755	4	WASHER, LOCK 3/8	0.03	
7	00784	26	WASHER, FLAT 1/2 ZP	0.03	
8	00P13	4	HHCS 3/8-16 UNC x 1-1/4 GR8	0.05	
9	00P14	4	NUT, HEX 3/8-16 UNC GR8	0.02	
10	00P15	26	HHCS 1/2-13 UNC x 1-3/4 GR8	0.13	
11	00P19	3	HHCS 5/16-18 UNC x 2-3/4 GR8	0.07	
12	00P20	3	NUT, HEX 5/16-18 UNC GR8	0.01	
13	00P35	26	NUT, LOCK 1/2-13 UNC GRC	0.04	
14	10P28	1	HHCS 5/16-18 UNC x 1-1/4 ZP	0.04	
15	10P29	1	COVER PLATE, CLAMP 7/8	0.08	
16	10P30	1	CLAMP ASSY, TWIN 1/2	0.04	
* 17	91P79	1	ALL MODEL TECH GUIDE	0.00	

\* ITEM NOT SHOWN



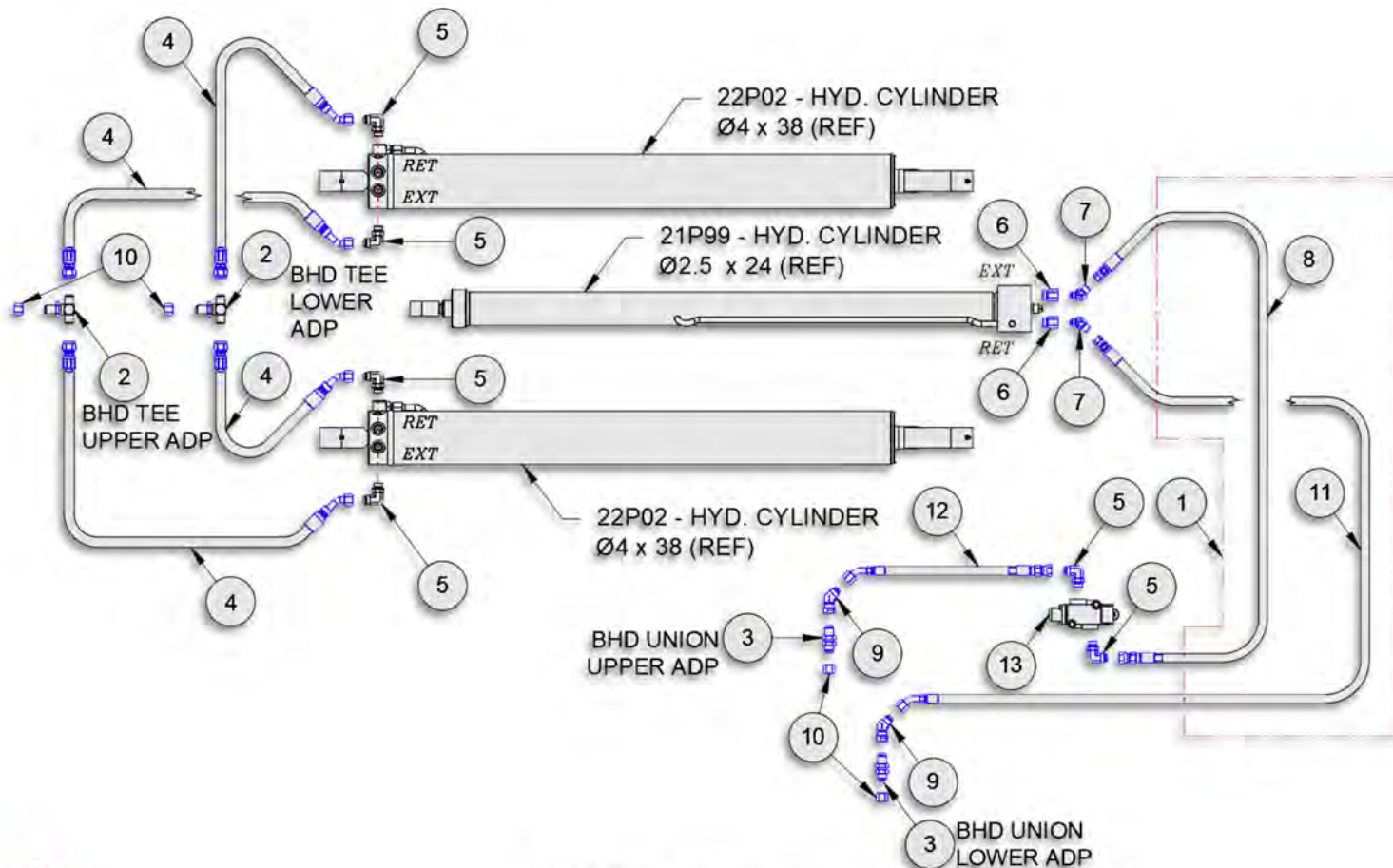
**HOIST INSTALL KIT, SL-105**



**90H94 – BASE CYLINDER CIRCUIT****SL-105**

ITEM	PART #	QTY	DESCRIPTION	WT-lb/ea.	WT-lb/all
1	90H74	1	Nylon Hose Sleeve x 60"	0.30	0.30
2	10P42	2	Adp Hyd 08MJ/08MJ/08MJ Tee	0.30	0.74
3	10P43	2	Adp Hyd 08MJ/08MJ BHD	1.00	1.00
4	10P49	4	Hose Assy 26 08-08FJ/08FJ90	1.30	5.20
5	11P23	6	Adp Hyd 08MJ/08MB 90	0.30	1.80
6	11P35	2	Adp Hyd 08MB/06FP	0.30	0.60
7	12P14	2	Adp Hyd 06MJ/06MP 45	0.02	0.08
8	12P83	1	Hose Assy 59 06-06FJ/08FJ	2.40	2.40
9	12P85	2	Adp Hyd 08FJ/08MJ 45	0.30	0.60
10	13P14	4	Adp Hyd MJIC Cap	0.07	0.28
11	13P93	1	Hose Assy 84.8 06-06FJ/08FJ45	3.45	3.45
12	13P94	1	Hose Assy 27.6 06-08FJ/08FJ45	1.66	1.66
13	23P04	1	Hyd Valve, 2-Way 08FB	5.20	5.20

If U-Lock is installed, Items 9 and 12 do not apply. See *Cyl Circuit, BL 105 STD* in the Options section.

**BASE CYLINDER CIRCUIT**

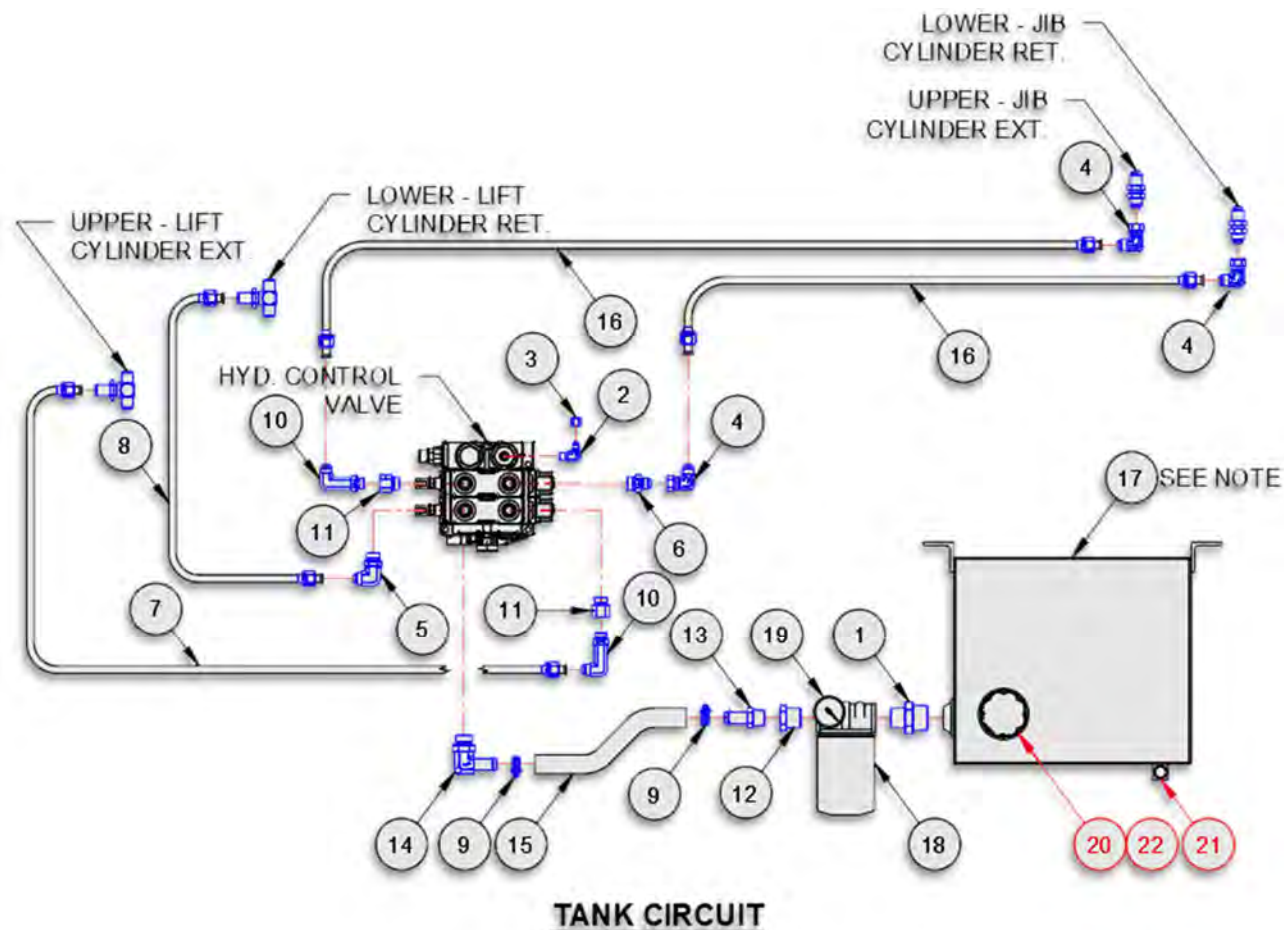
**90H95 – TANK CIRCUIT****SL-105**

ITEM	PART #	QTY	DESCRIPTION	WT-lb/ea.	WT-lb/all
1	10P26	1	Adp Hyd 20MP/16MP	0.70	0.70
2	10P37	1	Adp Hyd 04MJ/04MP 90	0.30	0.30
3	10P38	1	Adp Hyd 04FJ Cap	0.10	0.10
4	10P44	3	Adp Hyd 08MJ/08FJ 90	0.30	0.90
5	10P45	1	Adp Hyd 08MJ/10MB 90	0.30	0.30
6	11P08	1	Adp Hyd 08MJ/10MB	0.30	0.30
7	11P09	1	Hyd Tube, Low 1/2 x 26-3/4	2.10	2.10
8	11P10	1	Hyd Tube, Up 1/2 x 26-3/4	2.20	2.20
9	11P20	2	Worm Gear Clamp (HSS16)	0.10	0.20
10	12P16	2	Adp Hyd 08MJ/08MB 90 LL	0.30	0.60
11	12P17	2	Adp Hyd 10MB/08FB	0.30	0.60
12	12P21	1	Adp Hyd 16MP/12FP	0.20	0.20
13	12P22	1	Adp Hyd 12HB/12/MP	0.30	0.30
14	12P23	1	Adp Hyd 12HB/12MB 90	0.60	0.60
15	12P29	1	Hose 3/4 x 24 LP	0.88	0.88
16	13P79	2	Hyd Tube, Low 1/2 x 51-5/8	2.03	4.06
17	20P05	1	Hyd Tank, 15 Gallon	54.20	54.20
18	20P22	1	Hyd Filter Assembly – 25 GPM	2.30	2.30
19	20P64	1	Hyd Filter Indicator	-	-

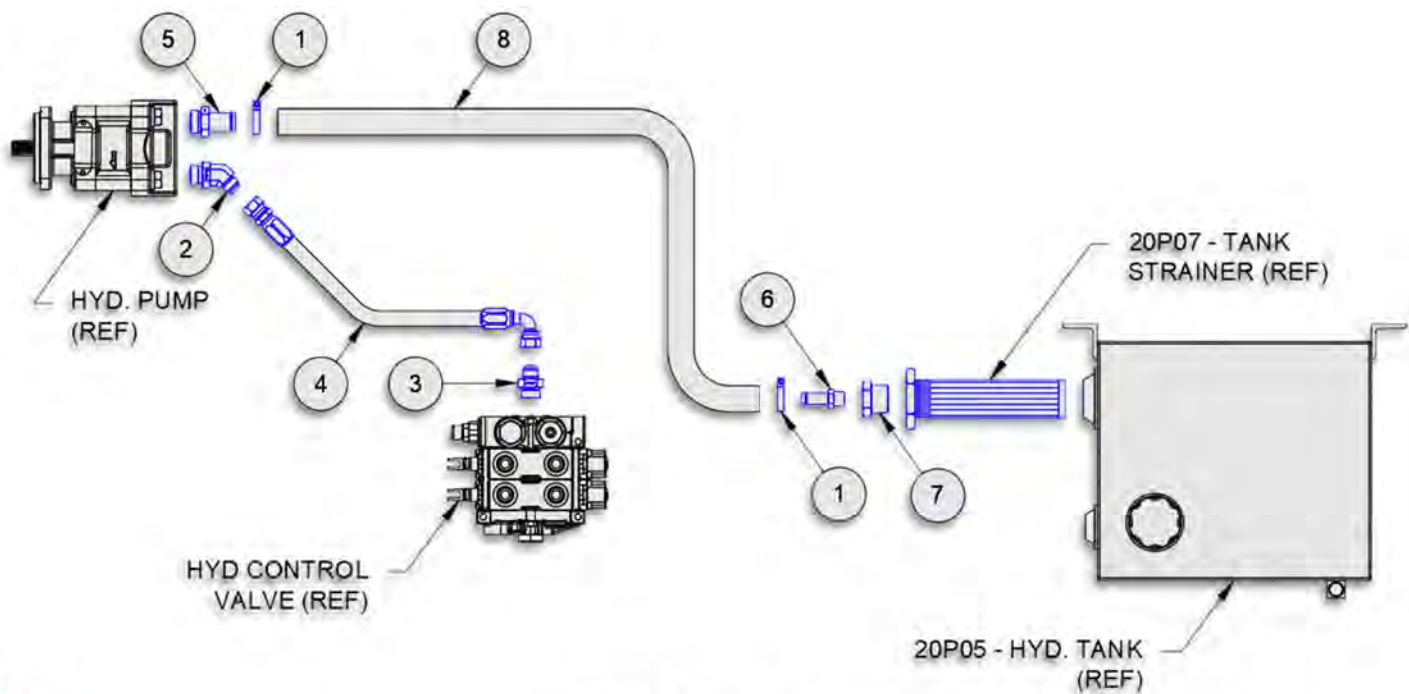
**TANK SERVICE PARTS**

20	20P07		Hyd Strainer, 25 GPM		
21	20P96		Sight Gauge, Hyd Tank		
22	20P97		Breather Cap Assy, Hyd Tank		

Note: Tank consists of tank weldment, tank mounted strainer, sight gauge, filler/breather cap, magnetic drain plug and port plugs.



90H91 – PUMP CIRCUIT					SL-105	
ITEM	PART #	QTY	DESCRIPTION	WT-lb/ea.	WT-lb/all	
1	10P21	2	T-Bolt Clamp - 1-1/2 Dia	0.10	0.20	
2	10P32	1	Adp Hyd 10MJ/12MB 45	0.30	0.30	
3	10P35	1	Adp Hyd 10MJ/12MB	0.30	0.30	
4	10P61	1	Hose Assy 106 08-10FJ/10FJ90	3.80	3.80	
5	12P18	1	Adp Hyd 16HB/16MB	0.40	0.40	
6	12P19	1	Adp Hyd 10HB/10MP	0.3	0.30	
7	12P20	1	Adp Hyd 20MP/16FP	0.30	0.30	
8	12P28	1	Hose 1 X 120 LP	6.60	6.60	



**PUMP CIRCUIT**

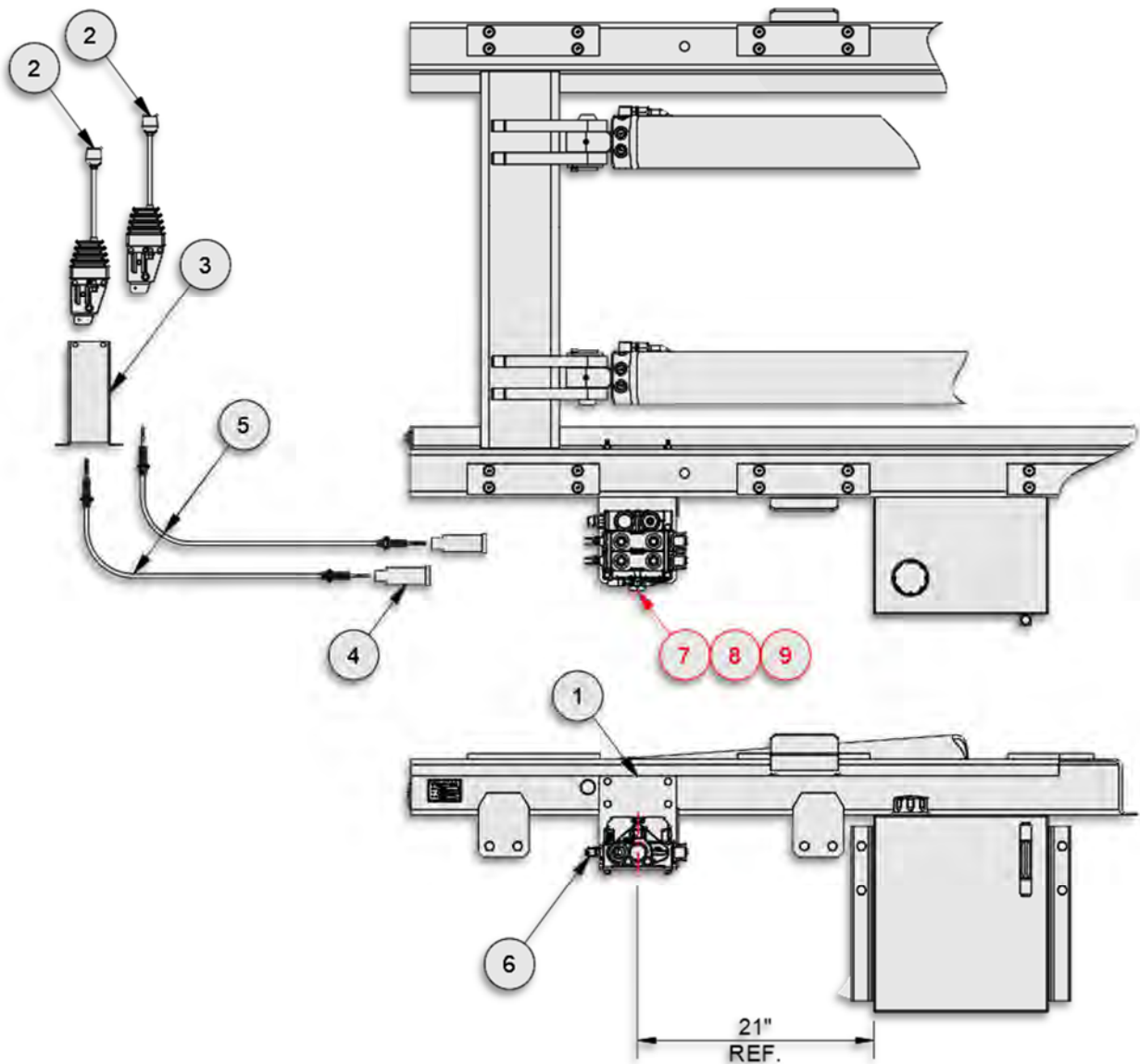


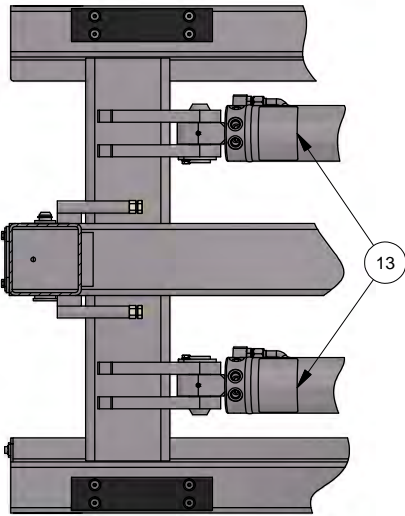
**90H72 – MANUAL CONTROLS, 2-SECTION****SL-105**

ITEM	PART #	QTY	DESCRIPTION	WT-lb/ea.	WT-lb/all
1	10H51	1	Valve Mount Bracket	8.20	8.20
2	20P08	2	Control Handle, Cable	2.80	5.60
3	20P09	1	Control Console, 2 Sect	4.10	4.10
4	20P10	2	Bonnet Kit, V20	0.50	1.00
5	20P15	2	Control Cable Assy, 84" Std	1.83	3.66
6	21P32	1	Hyd Valve, V20, 2 Sect 3250	27.00	27.00

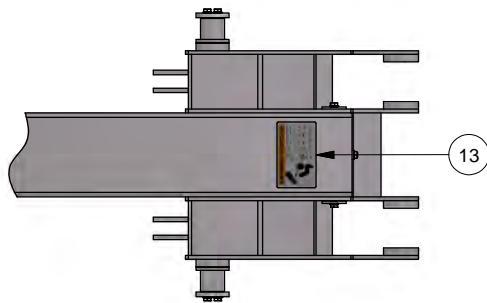
**VALVE SERVICE PARTS**

7	20P17		Relief Valve Cart, 3250 V20		
8	22P20		Seal Kit, Sect V20		
9	22P21		Seal Kit, Sect & Spool V20		

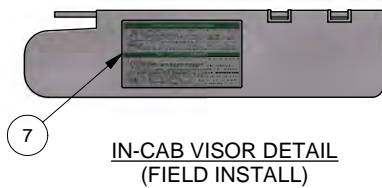
**MANUAL CONTROLS**



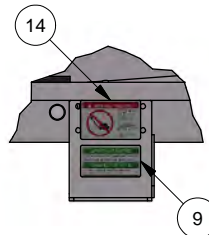
MAIN FRAME TOP VIEW



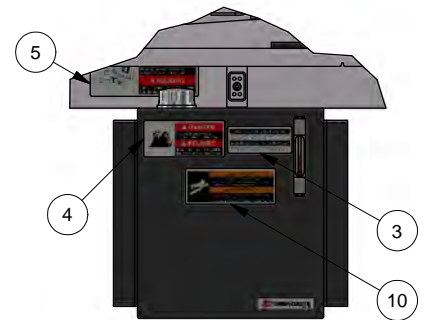
OUTER TUBE TOP VIEW



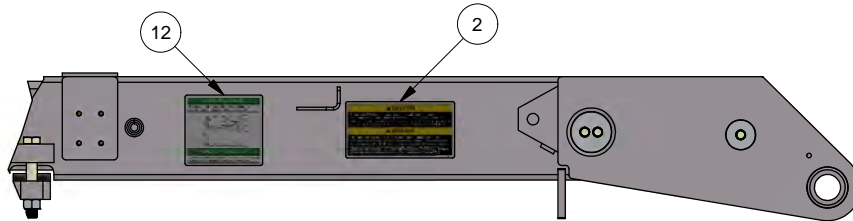
IN-CAB VISOR DETAIL  
(FIELD INSTALL)



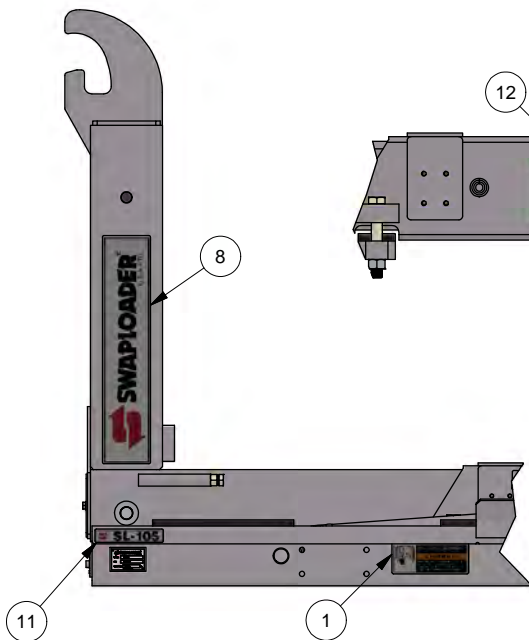
VALVE MOUNT DETAIL  
(FIELD INSTALL)



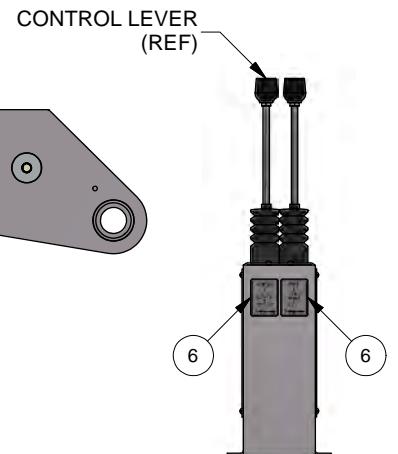
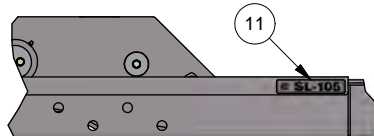
TANK DETAIL  
(FIELD INSTALL)



OUTER TUBE DETAIL  
(TYPICAL ON BOTH SIDES)



MAIN FRAME DETAIL  
(TYPICAL ON BOTH SIDES)



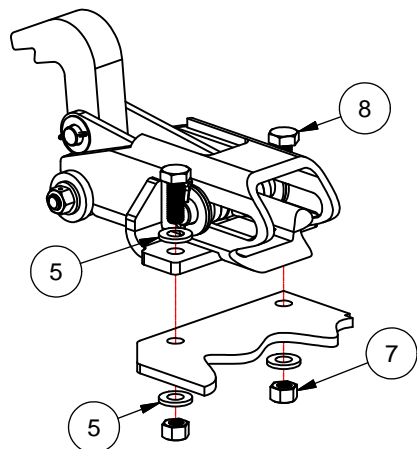
IN-CAB CONSOLE DETAIL  
(FIELD INSTALL)

PARTS PER 12H57 ASSEMBLY				
ITEM	QTY	PART #	DESCRIPTION	WT-lb./ea.
1	2	90P07	DECAL, OP & SERVICE MANUAL	0.00
2	2	90P08	DECAL, HOIST/BODY	0.00
3	1	90P09	DECAL, HYD OIL	0.00
4	1	90P10	DECAL, HYD OIL FLAMMABLE	0.00
5	2	90P11	DECAL, HOIST FALLING	0.00
6	1	90P12	LEVER CONTROL DECAL	0.01
7	1	90P13	DECAL, SAFETY INSTRUCTIONS	0.00
8	2	90P14	DECAL, SWAPLOADER	0.01
9	1	90P18	DECAL, RELIEF VALVE	0.00
10	1	90P78	DECAL, HIGH-PRESSURE FLUIDS	0.00
11	4	90P96	DECAL, SL-105	0.00
12	2	91P06	DECAL, LUBRICATION POINTS	0.00
13	3	91P52	DECAL, COUNTERBALANCE VALVE	0.00
14	1	91P66	DECAL, OUTSIDE CONTROLS	0.00

# OPTIONS

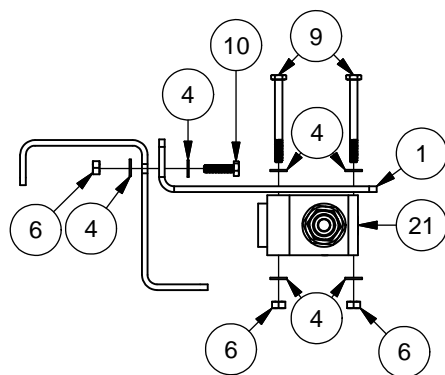
***This Page Intentionally Left Blank***

DISC-LOCK WASHER TORQUE SPEC'S	
BOLT SIZE	SAE GR 8 ASSY TORQUE (FT-LBS)
3/8	53
7/16	85
1/2	130
5/8	258
3/4	459
7/8	739
1	1108
NOTE: APPLY LOCTITE 243 (BLUE) TO ALL BOLTS.	

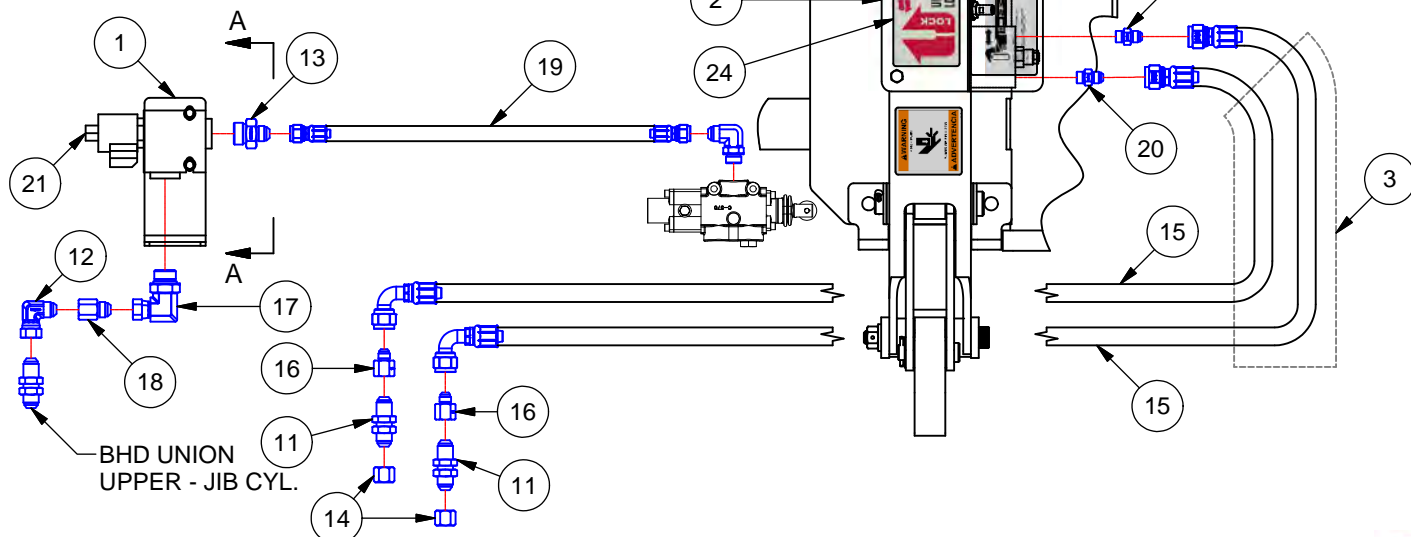


HYD BODY LOCK MOUNTING DETAIL

91H69 - CYLINDER CIRCUIT, BL 105 STD				
ITEM	PART #	QTY	DESCRIPTION	WT-lb/ea
1	27H22	1	VALVE MOUNT BKT, SOLENOID	1.22
2	44H76	1	UNIVERSAL LOCK ASSY, 100/200	86.42
3	90H74	1	NYLON HOSE SLEEVE x 60"	0.00
4	00770	8	WASHER, FLAT 1/4	0.00
5	00785	8	WASHER, FLAT 5/8 ZP	0.05
6	00P51	4	NUT, LOCK 1/4-20 UNC GR8	0.01
7	00P55	4	NUT, LOCK 5/8-11 UNC GR8	0.08
8	00P69	4	HHCS 5/8-11 UNC x 2 GR8	0.23
9	01P41	2	HHCS 1/4-20 UNC x 2-3/4 GR8	0.04
10	01P56	2	HHCS 1/4-20 UNC x 1 GR8	0.02
11	10P43	2	ADP HYD 08MJ/08MJ BHD	0.28
12	10P44	1	ADP HYD 08MJ/08FJ 90	0.23
13	11P83	1	ADP HYD 08MJ/12MB	0.30
14	13P14	2	ADP HYD 08FJ CAP	0.07
15	13P78	2	HOSE ASSY 56 06-06FJ/06FJ90	2.00
16	13P87	2	ADP HYD 08FJ/06MJ	0.10
17	13P98	1	ADP HYD 12MB/08FJ90	0.65
18	13P99	1	ADP HYD 08FJ/08MJ	0.14
19	14P03	1	HOSE ASSY 19 06-08FJ/08FJ	0.73
20	14P77	2	ADP HYD 06MJ/06MB .141 RSTR.	0.08
21	23P02	1	SOLENOID VALVE, U-LOCK	2.85
22	91P50	2	DECAL, PINCH POINT	0.00
23	91P51	3	DECAL, U-LOCK ENGAGEMENT	0.00
24	92P31	2	DECAL, U-LOCK PATENT	0.00



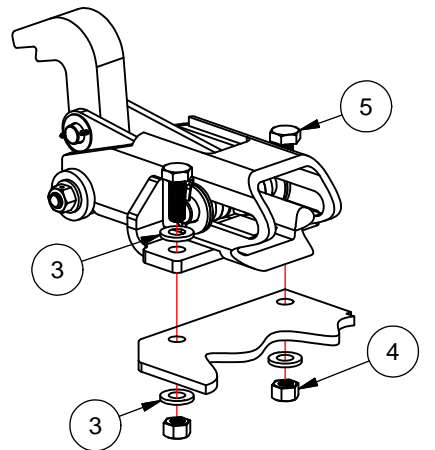
SECTION A-A



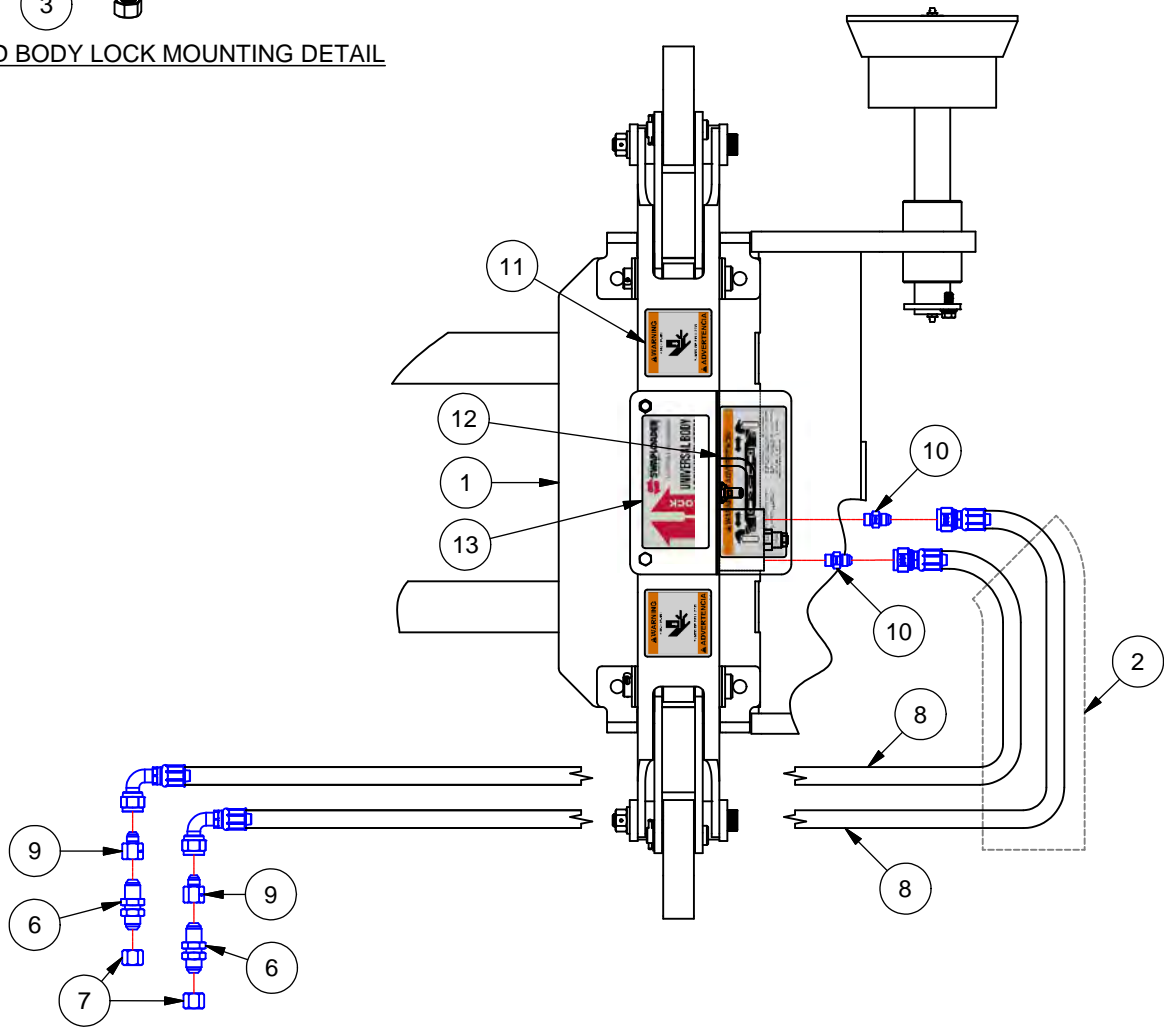
CYLINDER CIRCUIT, BL 105 STD

DISC-LOCK WASHER TORQUE SPEC'S	
BOLT SIZE	SAE GR 8 ASSY TORQUE (FT-LBS)
3/8	53
7/16	85
1/2	130
5/8	258
3/4	459
7/8	739
1	1108
NOTE: APPLY LOCTITE 243 (BLUE) TO ALL BOLTS.	

91H45 - CYLINDER CIRCUIT, BL 105 EHV				
ITEM	PART #	QTY	DESCRIPTION	WT-lb/ea
1	44H76	1	UNIVERSAL LOCK ASSY, 100/200	86.42
2	90H74	1	NYLON HOSE SLEEVE x 60"	0.00
3	00785	8	WASHER, FLAT 5/8 ZP	0.05
4	00P55	4	NUT, LOCK 5/8-11 UNC GR8	0.08
5	00P69	4	HHCS 5/8-11 UNC x 2 GR8	0.23
6	10P43	2	ADP HYD 08MJ/08MJ BHD	0.28
7	13P14	2	ADP HYD 08FJ CAP	0.07
8	13P78	2	HOSE ASSY 56 06-06FJ/06FJ90	2.00
9	13P87	2	ADP HYD 08FJ/06MJ	0.10
10	14P77	2	ADP HYD 06MJ/06MB .141 RSTR.	0.08
11	91P50	2	DECAL, PINCH POINT	0.00
12	91P51	3	DECAL, U-LOCK ENGAGEMENT	0.00
13	92P31	2	DECAL, U-LOCK PATENT	0.00



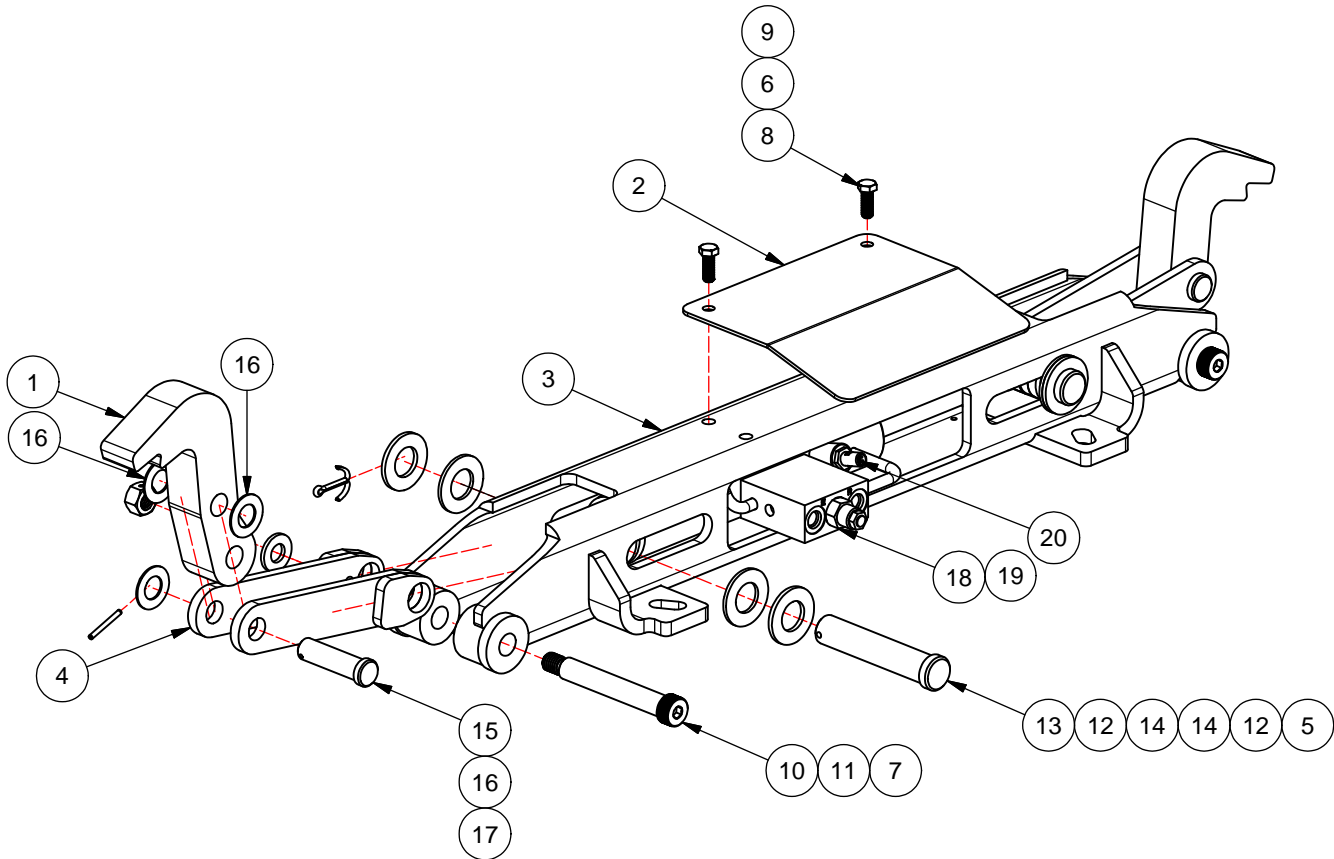
HYD BODY LOCK MOUNTING DETAIL



CYLINDER CIRCUIT, BL 105 EHV

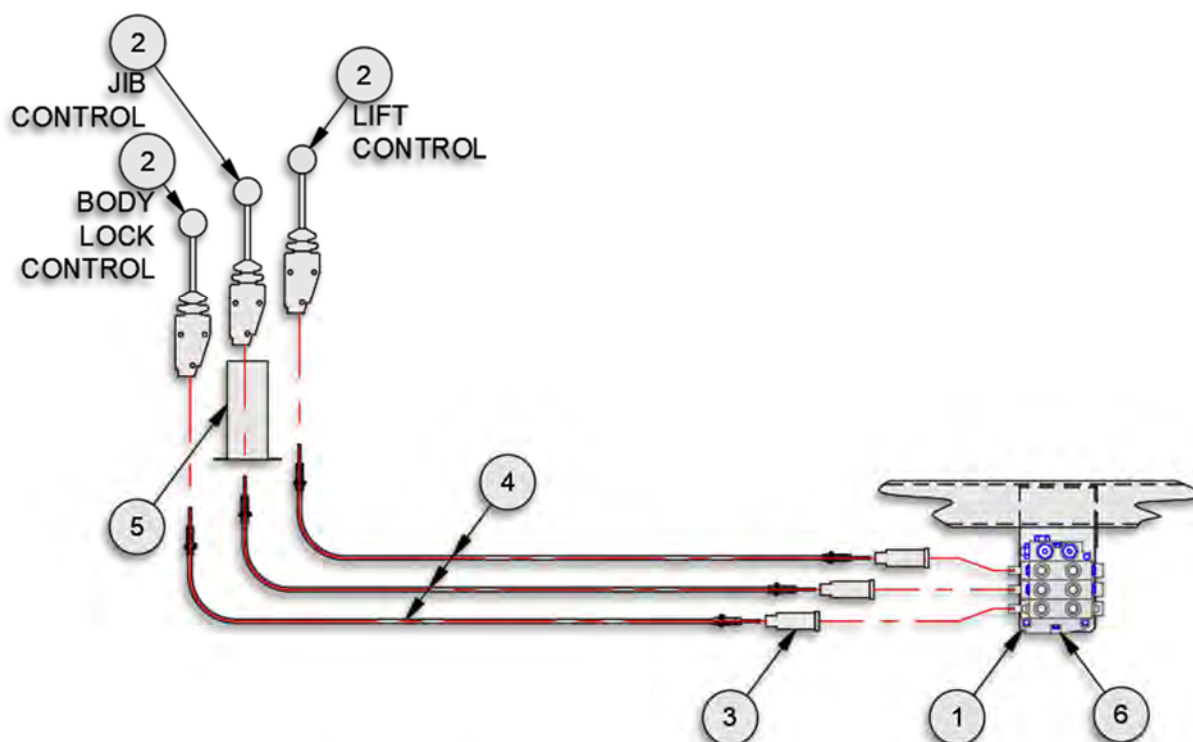
DISC-LOCK WASHER TORQUE SPEC'S	
BOLT SIZE	SAE GR 8 ASSY TORQUE (FT-LBS)
3/8	53
7/16	85
1/2	130
5/8	258
3/4	459
7/8	739
1	1108
NOTE: APPLY LOCTITE 243 (BLUE) TO ALL BOLTS.	

44H76 - U-LOCK ASSEMBLY				
ITEM	PART #	QTY	DESCRIPTION	WT-lb/ea
1	26H97	2	SINGLE PRONG	6.58
2	27H26	1	COVER PLATE, HYD LOCK	2.43
3	44H77	1	UNIVERSAL LOCK WELDMENT	43.67
4	44H78	4	LINKAGE WELDMENT	1.74
5	00837	2	PIN, COTTER 3/16 DIA x 2	0.02
6	00P14	2	NUT, HEX 3/8-16 UNC GR8	0.02
7	00P55	2	NUT, LOCK 5/8-11 UNC GR8	0.08
8	00P62	2	HHCS 3/8-16 UNC x 1 GR8	0.04
9	01P28	2	WASHER, DISC LOCK 3/8 PR	0.00
10	01P85	2	SS 5/8-11 UNC x 4-3/4	0.75
11	01P86	2	WASHER, FLAT 5/8 ZP	0.06
12	01P87	4	WASHER, FLAT 1 ZP	0.10
13	01P88	2	PIN, CLEVIS 1 x 4-11/16	1.21
14	01P89	4	WASHER, FLAT 1 NYLON	0.01
15	01P90	2	PIN, CLEVIS 3/4 x 2-1/2 ZP	0.39
16	01P91	6	WASHER, FLAT 3/4 SS	0.02
17	01P92	2	PIN, SLTD SPG 5/32 x 1-1/2 ZP	0.01
18	22P90	1	UNIVERSAL LOCK CYLINDER	14.46
SERVICE PARTS FOR CYLINDER				
19	22P78	1	C'BAL CART, 5000 PSI CBCG-LJN	0.50
20	23P94	1	PROXIMITY SWITCH, U-LOCK	0.10



**UNIVERSAL LOCK ASSY, 100/200**

91H48 – MANUAL CONTROLS, 3-SECTION					SL-105
ITEM	PART #	QTY	DESCRIPTION	WT-lb/ea.	WT-lb/all
1	13H76	1	Valve Mount Bkt, 3-Sect	11.47	11.47
2	20P08	3	Control Handle, Cable	2.80	8.40
3	20P10	3	Bonnet Kit, V20	0.50	1.50
4	20P15	3	Control Cable Assy, 84 STD	1.83	5.49
5	20P78	1	Control Console, 3-Sect	0.60	0.60
6	22P94	1	Hyd Valve, 3-Sect 3250 V20	45.00	45.00

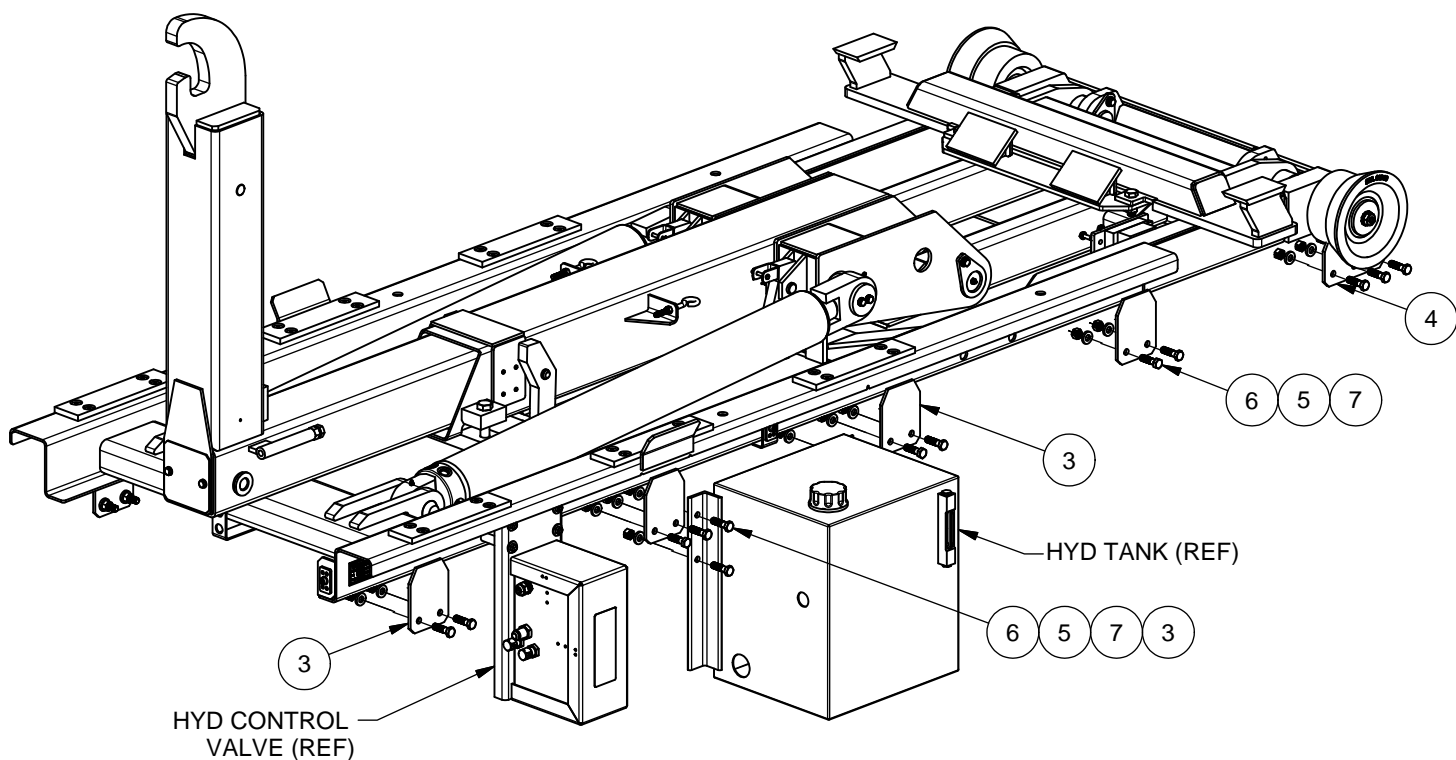
**MANUAL CONTROLS, 3-SECTION**



DISC-LOCK WASHER TORQUE SPEC'S	
BOLT SIZE	SAE GR 8 ASSY TORQUE (FT-LBS)
3/8	53
7/16	85
1/2	130
5/8	258
3/4	459
7/8	739
1	1108
NOTE: APPLY LOCTITE 243 (BLUE) TO ALL BOLTS.	

12H79 - HOIST INSTALL KIT, EHV-105					
ITEM	PART #	QTY	DESCRIPTION		WT-lb/ea
* 1	12H57	1	DECAL ASSEMBLY, SL-105		0.00
* 2	12H58	1	PARTS & OP, SL-105		0.00
3	22H38	8	FRONT BRACKET		1.72
4	22H39	2	REAR BRACKET		2.10
5	00784	26	WASHER, FLAT 1/2 ZP		0.03
6	00P15	26	HHCS 1/2-13 UNC x 1-3/4 GR8		0.13
7	00P35	26	NUT, LOCK 1/2-13 UNC GRC		0.04
* 8	91P79	1	ALL MODEL TECH GUIDE		0.00

\* ITEM NOT SHOWN



## HOIST INSTALL KIT, EHV-105

**91H23 – TANK CIRCUIT (EHV)****SL-105**

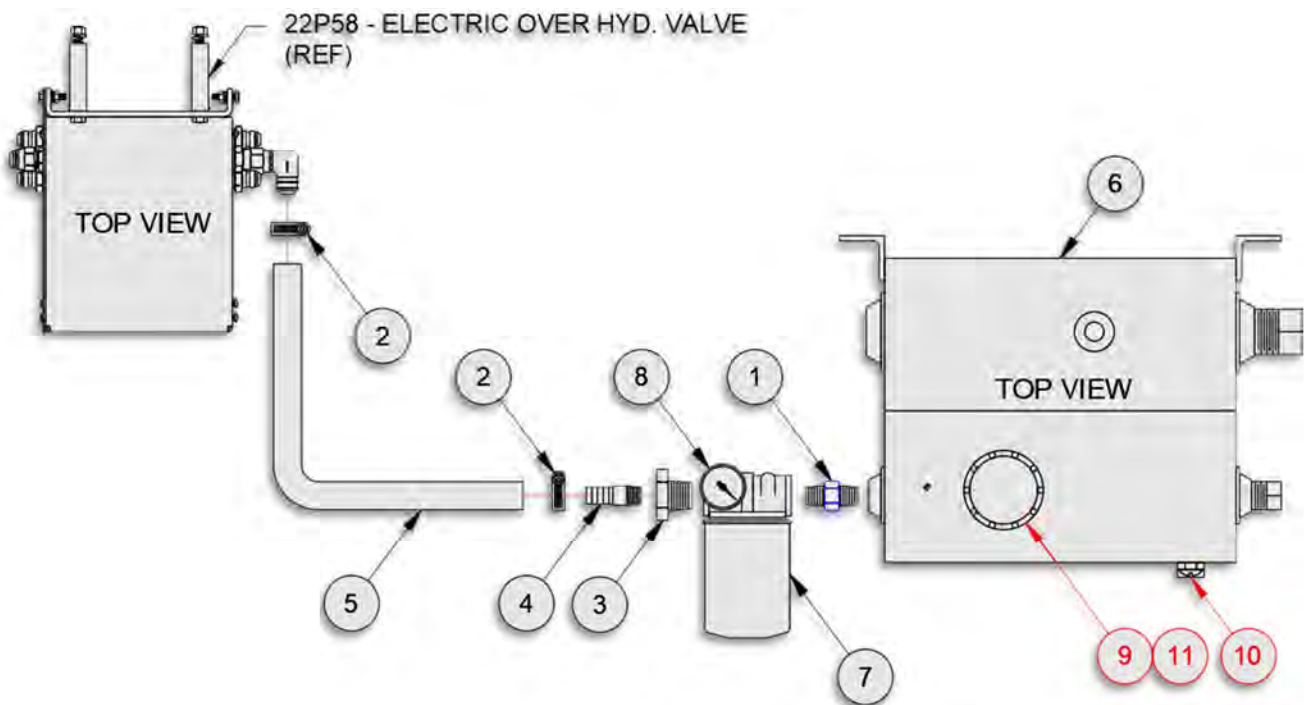
ITEM	PART #	QTY	DESCRIPTION	WT-lb/ea.	WT-lb/all
1	10P26	1	Adp Hyd 20MP/16MP	0.70	0.70
2	11P20	2	Worm Gear Clamp (HSS16)	0.10	0.20
3	12P21	1	Adp Hyd 16MP/12FP	0.20	0.20
4	12P22	1	Adp Hyd 12HB/12MP	0.30	0.30
5	12P29	1	Hose 3/4 x 24 LP	0.88	0.88
6	20P05	1	Hyd. Tank, - 15 Gallon	54.20	54.20
7	20P22	1	Hyd. Filter Assembly - 25 GPM	2.30	2.30
8	20P64	1	Hyd Filter Indicator	0.01	0.01

**NOTE:**

TANK CONSISTS OF TANK WELDMENT, TANK MOUNTED STRAINER, SIGHT GAUGE, FILLER/BREATHING CAP, MAGNETIC DRAIN PLUG AND PORT PLUGS.

**SERVICE PARTS FOR TANK**

9	20P07	1	Hyd Strainer, 25 GPM		
10	20P96	1	Sight Gauge, Hyd Tank		
11	20P97	1	Breather Cap Assy, Hyd Tank		

**TANK CIRCUIT (EHV)**

**TANK SERVICE PARTS**

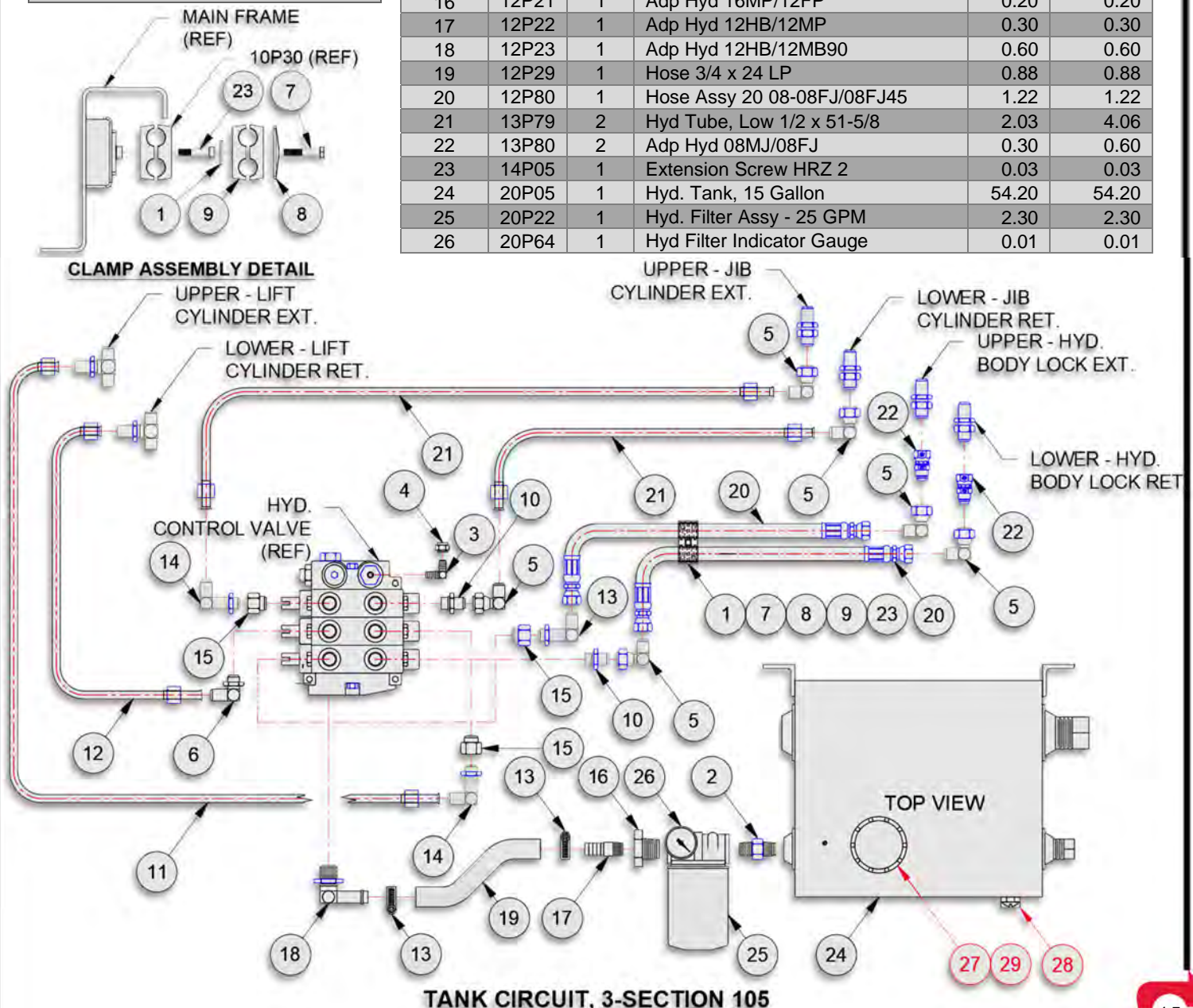
ITEM	PART #	QTY	DESC.
27	20P07	1	Hyd Strainer, 25 GPM
28	20P96	1	Sight Gauge, Hyd Tank
29	20P97	1	Breather Cap Assy, Hyd Tank

**NOTE:**

TANK CONSISTS OF TANK WELDMENT, TANK MOUNTED STRAINER, SIGHT GAUGE, FILLER/BREATHING CAP, MAGNETIC DRAIN PLUG AND PORT PLUGS.

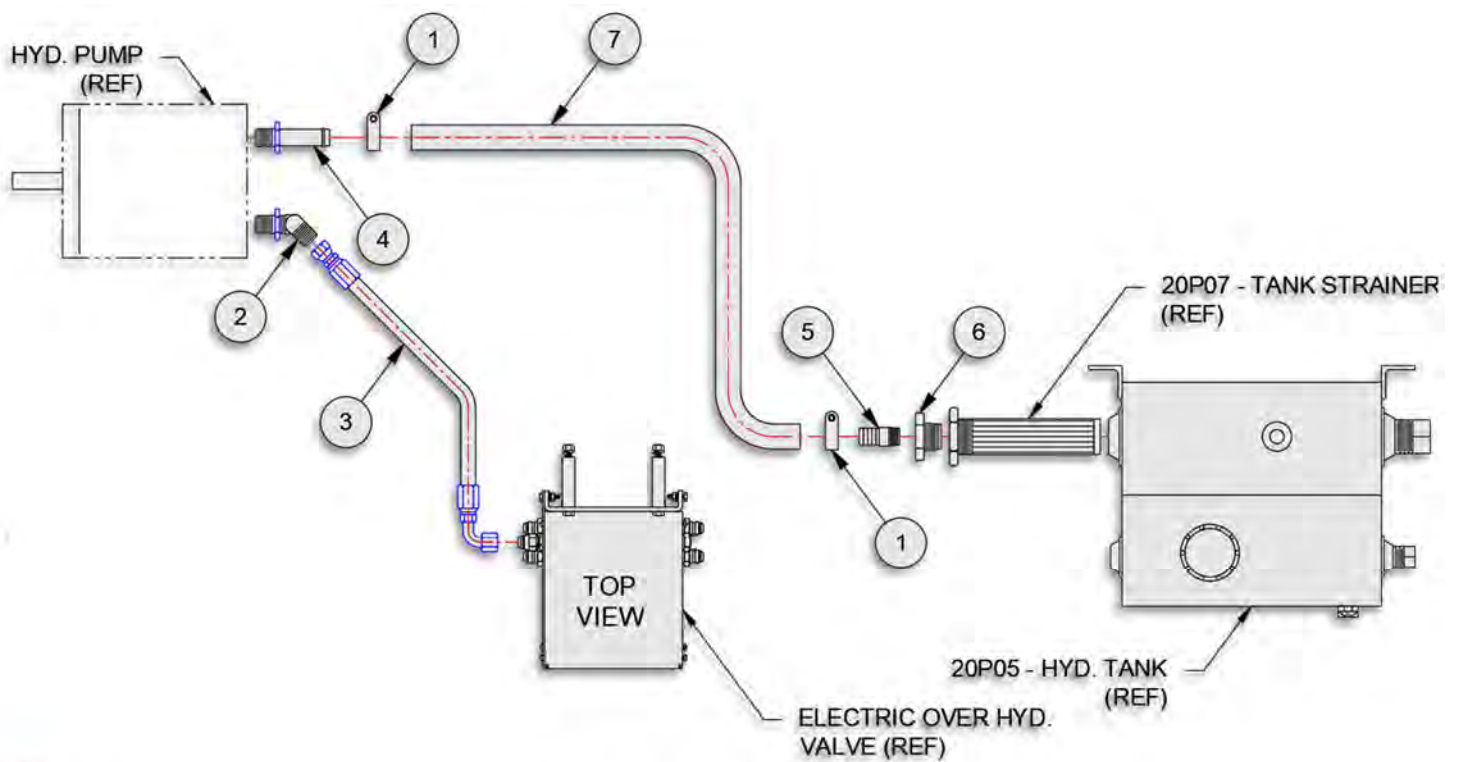
**91H41 – TANK CIRCUIT, 3-SECTION****SL-105**

ITEM	PART #	QTY	DESCRIPTION	WT-lb/ea.	WT-lb/all
1	01P98	2	Adp Hyd 10MJ/12MB 45	0.30	0.30
2	10P26	1	Adp Hyd 20MP/16MP	3.80	3.80
3	10P37	1	Adp Hyd 04MJ/04MP90	0.40	0.40
4	10P38	1	Adp Hyd 04FJ Cap	0.30	0.30
5	10P44	6	Adp Hyd 08MJ/08FJ90	0.30	0.30
6	10P45	1	Adp Hyd 08MJ/10MB90	6.60	6.60
7	10P63	1	HHCS 5/16 x 1-3/4	0.05	0.05
8	10P64	1	Cover Plate. Clamp 1/2	0.10	0.10
9	10P65	2	Clamp Assy, Twin, 7/8	0.04	0.08
10	11P08	2	Adp Hyd 08MJ/10MB	0.30	0.60
11	11P09	1	Hyd Tube, Low 1/2 x 26-3/4	2.10	2.10
12	11P10	1	Hyd Tube, Up 1/2 x 26-3/4	2.20	2.20
13	11P20	2	Worm Gear Clamp (HSS16)	0.10	0.20
14	12P16	2	Adp Hyd 08MJ/08MB 90 LL	0.30	0.90
15	12P17	2	Adp Hyd 10MB/08FB	0.30	0.90
16	12P21	1	Adp Hyd 16MP/12FP	0.20	0.20
17	12P22	1	Adp Hyd 12HB/12MP	0.30	0.30
18	12P23	1	Adp Hyd 12HB/12MB90	0.60	0.60
19	12P29	1	Hose 3/4 x 24 LP	0.88	0.88
20	12P80	1	Hose Assy 20 08-08FJ/08FJ45	1.22	1.22
21	13P79	2	Hyd Tube, Low 1/2 x 51-5/8	2.03	4.06
22	13P80	2	Adp Hyd 08MJ/08FJ	0.30	0.60
23	14P05	1	Extension Screw HRZ 2	0.03	0.03
24	20P05	1	Hyd. Tank, 15 Gallon	54.20	54.20
25	20P22	1	Hyd. Filter Assy - 25 GPM	2.30	2.30
26	20P64	1	Hyd Filter Indicator Gauge	0.01	0.01

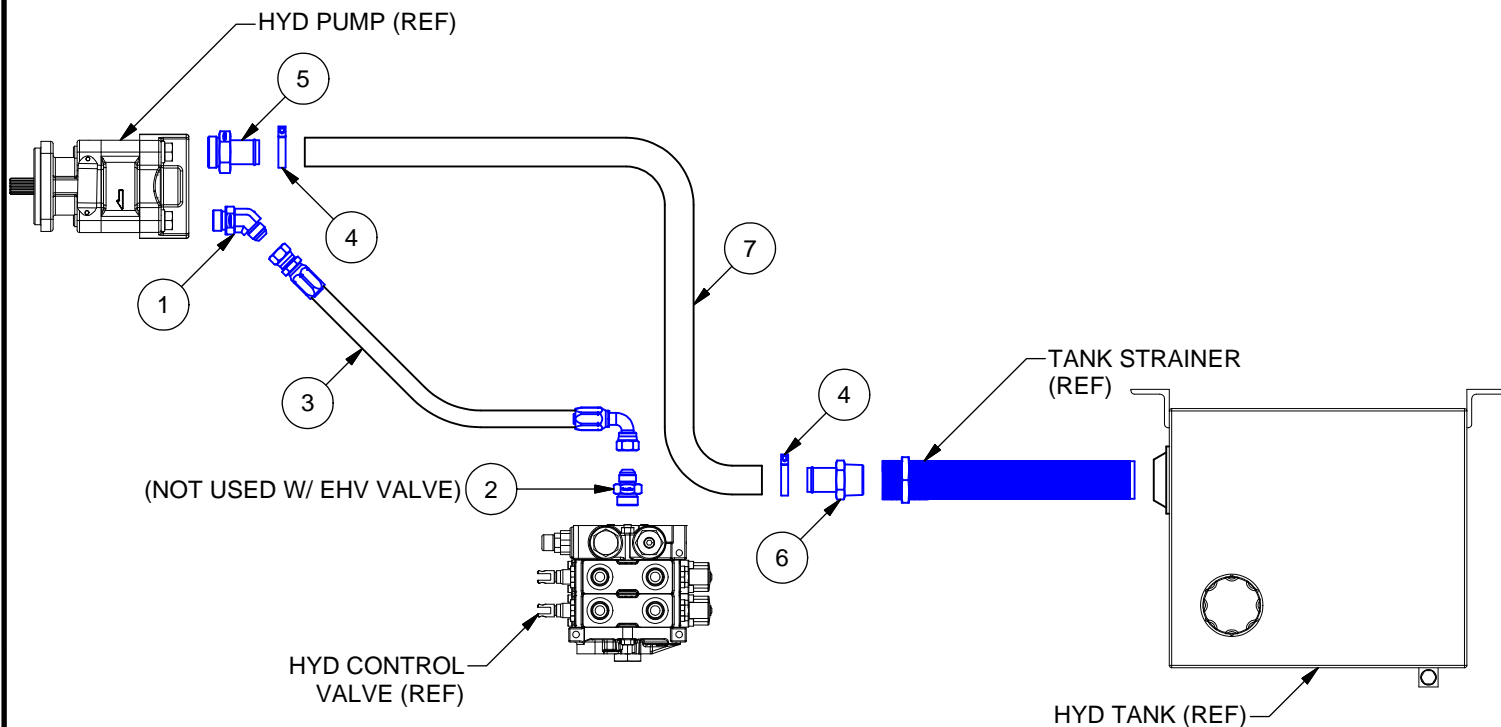


**91H22 – PUMP CIRCUIT (EHV)****SL-105**

ITEM	PART #	QTY	DESCRIPTION	WT-lb/ea.	WT-lb/all
1	10P21	2	T-Bolt Clamp - 1-1/2 Dia	0.10	0.20
2	10P32	1	Adp Hyd 10MJ/12MB 45	0.30	0.30
3	10P61	1	Hose Assy 106 08-10FJ/10FJ90	3.80	3.80
4	12P18	1	Adp Hyd 16HB/16MB	0.40	0.40
5	12P19	1	Adp Hyd 10HB/10MP	0.30	0.30
6	12P20	1	Adp Hyd 20MP/16FP	0.30	0.30
7	12P28	1	Hose 1 x 120 LP	6.60	6.60

**PUMP CIRCUIT (EHV)**

91H93 - PUMP CIRCUIT, F550				
ITEM	PART #	QTY	DESCRIPTION	WT-lb/ea
1	10P32	1	ADP HYD10MJ/12MB 45	0.30
2	10P35	1	ADP HYD 10MJ/12MB	0.30
3	10P61	1	HOSE ASSY 106-08-10FJ/10FJ90	4.42
4	10P78	2	CLAMP, T-BOLT Ø1-3/4	0.15
5	12P24	1	ADP HYD 20HB/20MB	0.60
6	12P25	1	ADP HYD 20HB/20MP	0.60
7	12P30	1	HOSE 1-1/4 x 148 LP	9.74

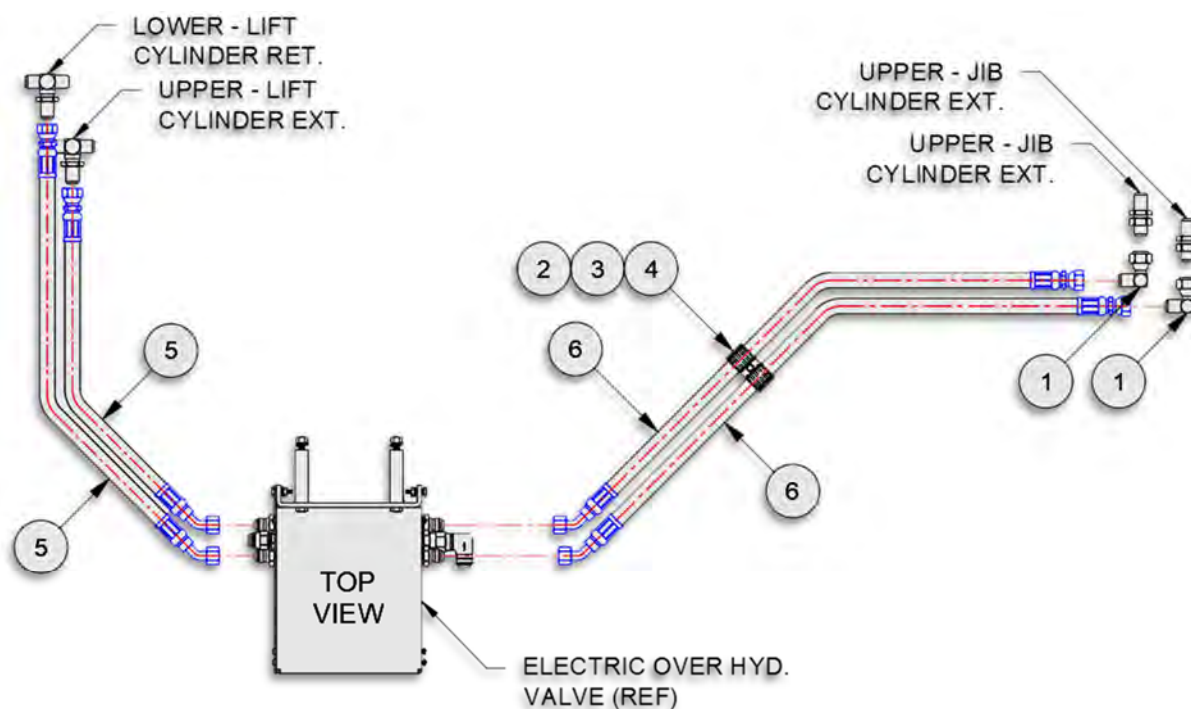


**PUMP CIRCUIT, F550**



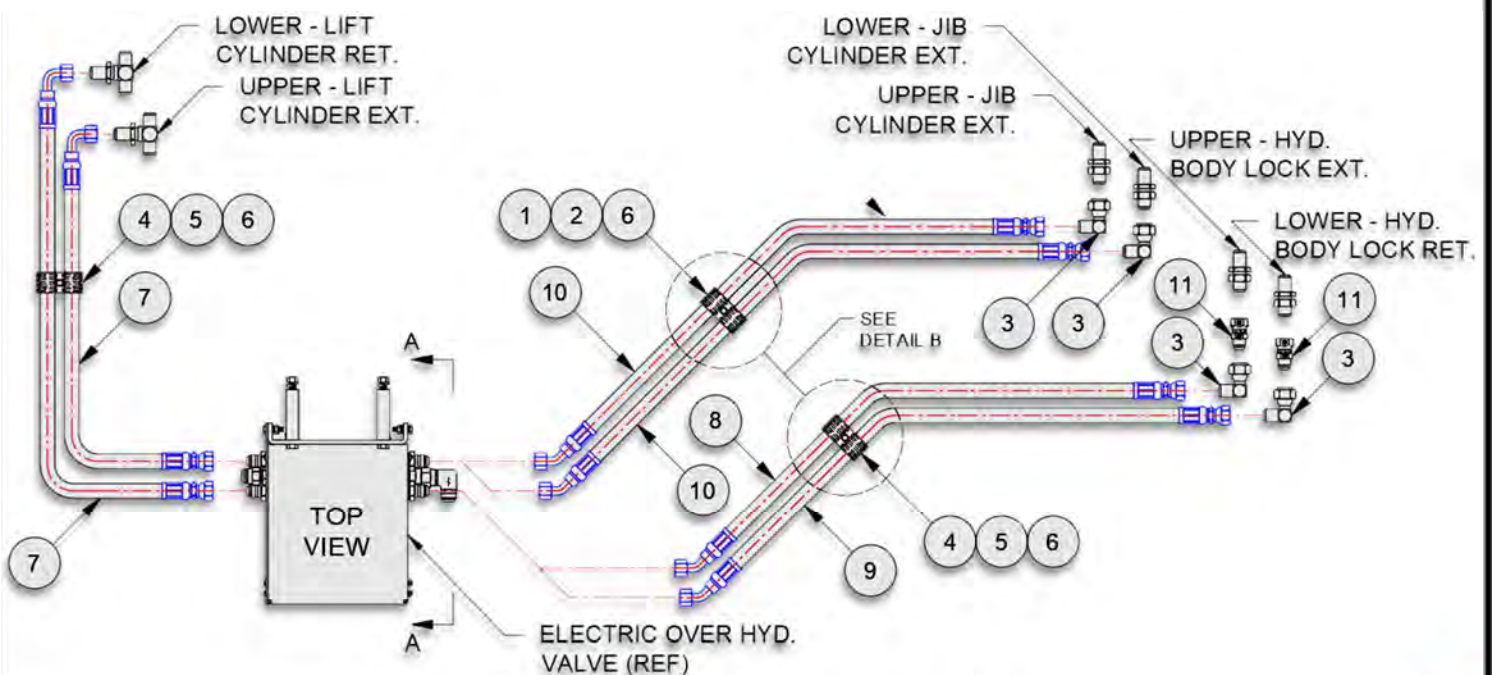
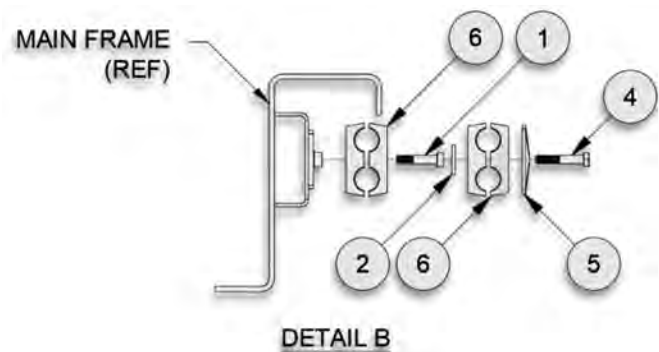
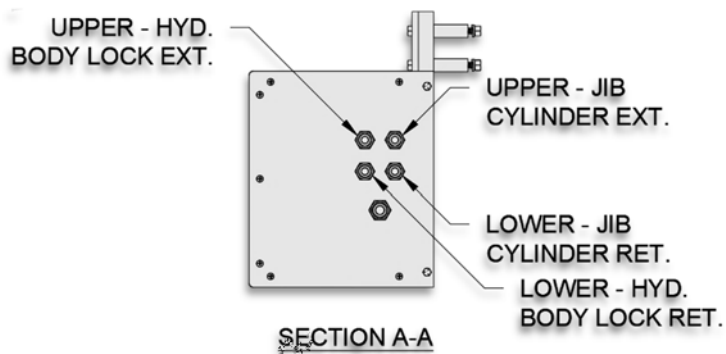
**91H24 – HOSE CIRCUIT, 2-SECTION (EHV)****SL-105**

ITEM	PART #	QTY	DESCRIPTION	WT-lb/ea.	WT-lb/all
1	10P44	2	Adp Hyd 08MJ/08FJ 90	0.30	0.60
2	10P63	2	HHCS 5/16 x 1-3/4	0.03	0.06
3	10P64	2	Cover Plate. Clamp 1/2	0.10	0.20
4	10P65	2	Clamp Assy, Twin, 7/8"	0.04	0.08
5	13P24	2	Hose Assy 39 08-08FJ/08FJ90	2.00	4.00
6	13P76	2	Hose Assy 52 08-08FJ/08FJ45	3.12	6.24

**HOSE CIRCUIT (EHV)**

**91H37 – HOSE CIRCUIT, 3-SECTION (EHV)****SL-105**

ITEM	PART #	QTY	DESCRIPTION	WT-lb/ea.	WT-lb/all
1	01P97	1	Extension Screw 5/16-18	0.03	0.03
2	01P98	1	Ext. Plate, Clamp	0.01	0.01
3	10P44	4	Adp Hyd 08MJ/08FJ 90	0.23	0.92
4	10P63	2	HHCS 5/16-18 UNC x 1-3/4 ZP	0.04	0.08
5	10P64	2	Cover Plate, Clamp 1/2	0.10	0.20
6	10P65	3	Clamp Assy, Twin 7/8	0.07	0.21
7	13P24	2	Hose Assy 39 08-08FJ/08FJ90	2.00	4.00
8	13P28	1	Hose Assy 57 08-08FJ/08FJ45	2.45	2.45
9	13P32	1	Hose Assy 60 08-08FJ/08FJ45	1.50	1.50
10	13P76	2	Hose Assy 52 08-08FJ/08FJ45	3.12	6.24
11	13P80	2	Adp Hyd 08MJ/08FJ	0.30	0.60

**HOSE CIRCUIT, 3-SECTION (EHV)**

***This Page Intentionally Left Blank***

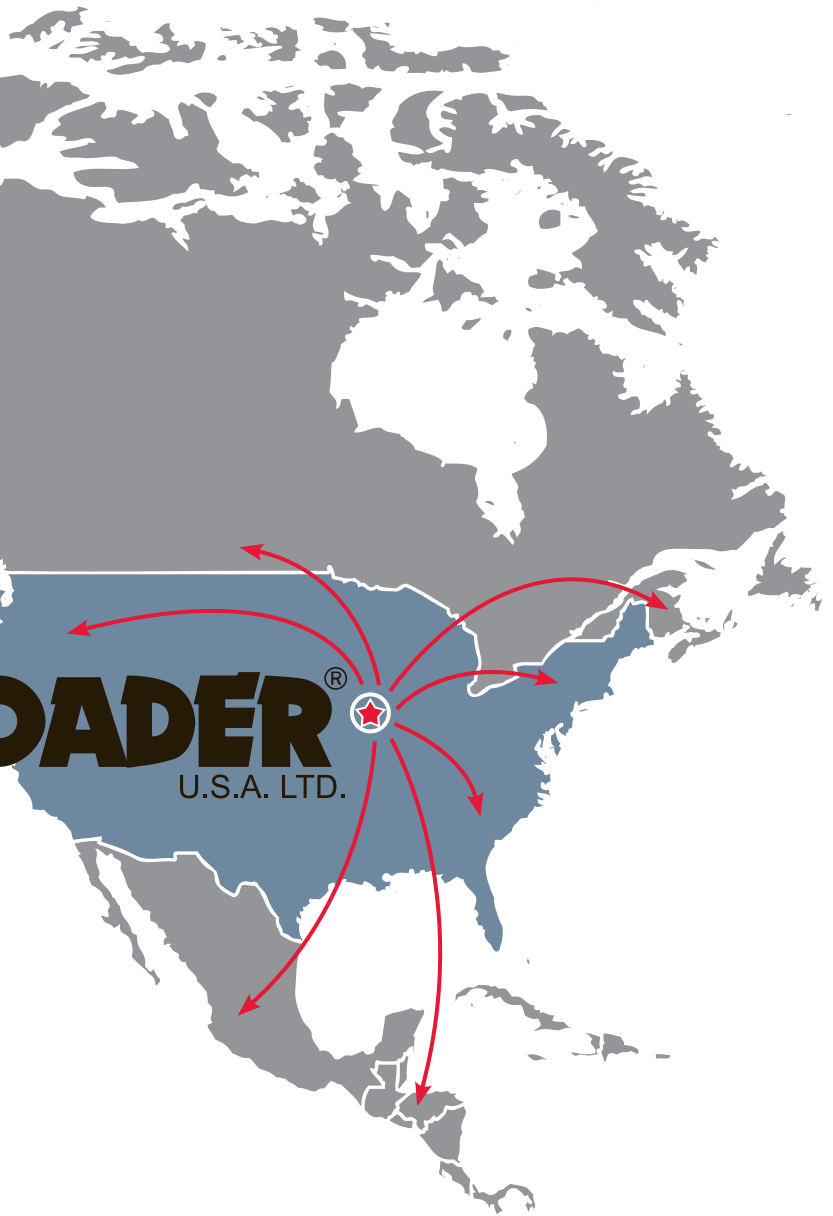




An EFCO Company

**SWAPLOADER<sup>®</sup>**  
*"Hooked on Quality"*

U.S.A. LTD.



📍 1800 Broadway Avenue, Des Moines, IA 50313-2644

☎ 515-266-3042 📞 888-767-8000 🌐 [www.swaploader.com](http://www.swaploader.com)

© 2025 Swaploader U.S.A. Ltd. All rights reserved. SL-105 PARTS-INSTALL MANUAL 12.19.25